

Anisomeridium anislobum (Müll. Arg.) Aptroot, in Aptroot, Diederich, Sérusiaux & Sipman, *Bibliotheca Lichenol.* 57: 21 (1995)
= *Arthopyrenia anisloba* Müll. Arg., *Flora, Regensburg* 66(19): 305 (1883)
= *Ditremis anisloba* (Müll. Arg.) R.C. Harris, *Some Florida Lichens* (New York): 31 (1990)

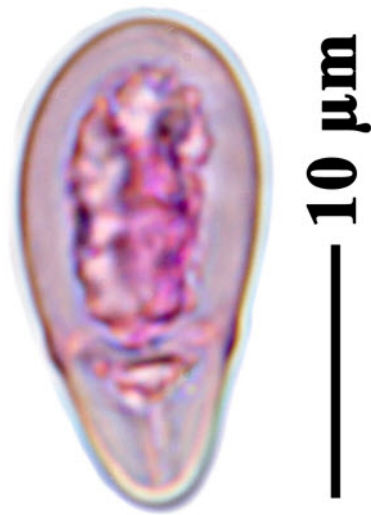
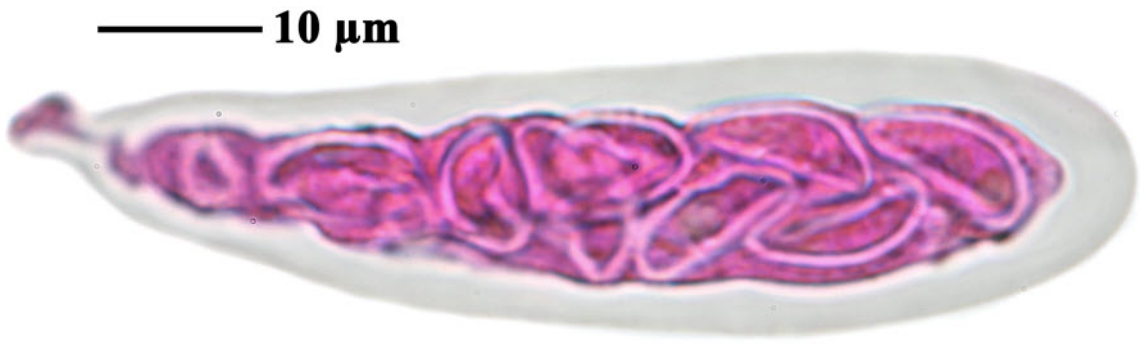
Thallus whitish to grey, UV-, smooth; ascomata perithecia, black, simple, 0.4-0.7 mm diam., with an apical ostiole; asci clavate, c. 90 x 30 μm , with a rather thick wall. Ascospores 8/ascus, hyaline, biseriate, smooth, straight, 1-septate with the lower cell smaller and the upper one larger, with rather rounded ends, 18-22 x 10-13 μm .

[ISE27985], Brazil, Santa Catarina, São Francisco do Sul, Parque Estadual do Acaraí. In restinga vegetation on tree. 26°20'44" S, 48°44'47" W, 10 m. Leg. M. Cáceres & A. Aptroot (no ISE 27985), 10.10.2015, det. A. Aptroot, 2015.





Anisomeridium anislobum



Anisomeridium ani-