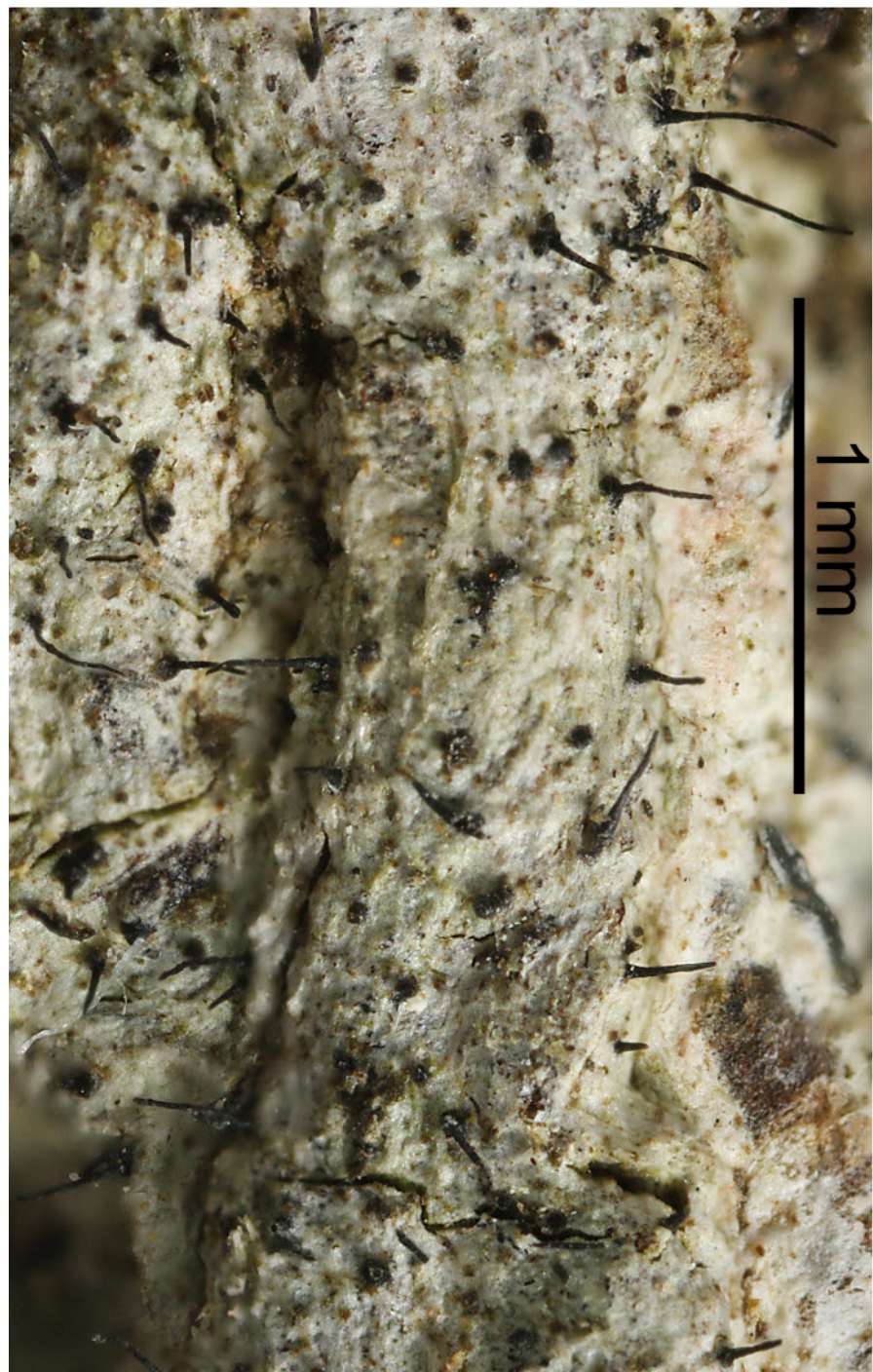
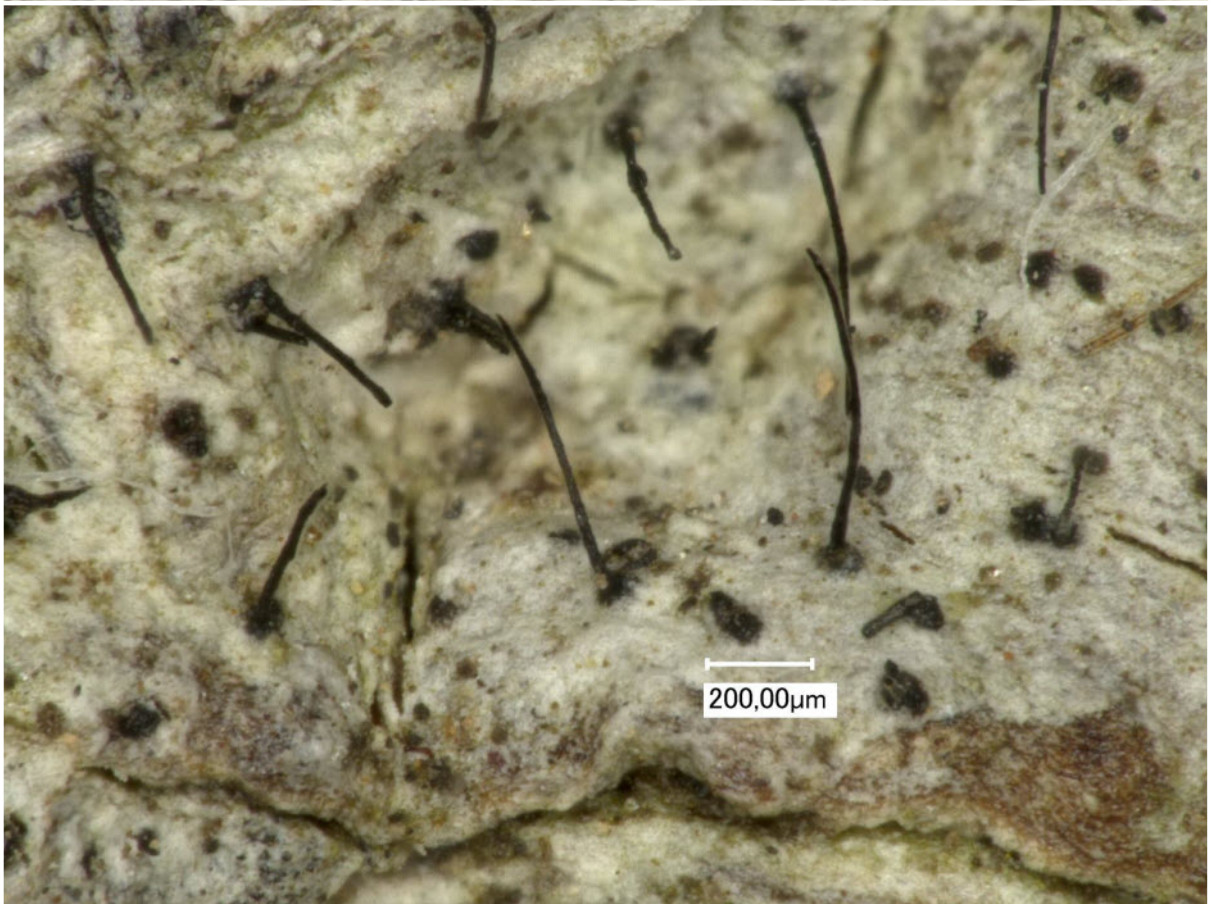
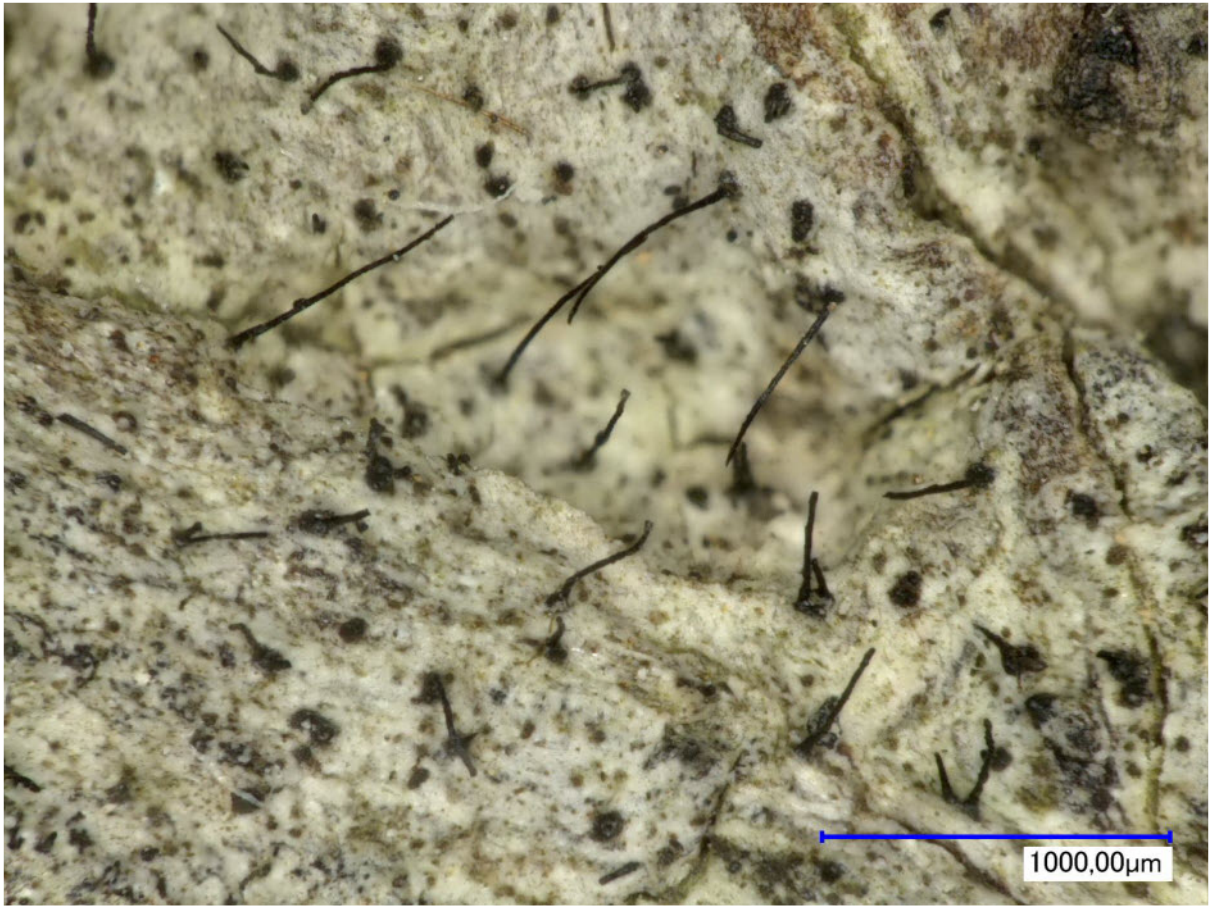


Anisomeridium throwerae R.C.Harris

Macropycnidia with a long, to 1.5 mm, beak through which the macroconidia are extruded in single file; macroconidia oblong, constricted in middle, 8-10 x 4-5 μm . Thallus whitish to grey green, endophloeodal, UV-. Ascomata immersed, subglobose, ca. 0.2 mm diam.; ostiole apical. Asci cylindrical, ca. 45 x 9 μm , with 8 biseriate spores. Ascospores ovoid, hyaline, 1-septate, slightly constricted at submedian septum, 12-17 x 5-6.5 μm . Lit. Harris, R.C. - 1995: More Florida Lichens.

[17592], Thailand, Trat province, Ban Phu Resort, 12.16619° N, 102.56977° E, 8 m. Leg. Schumm (IAL 7) 17.01.2012, det. Aptroot 2012.





Anisomeridium throwerae