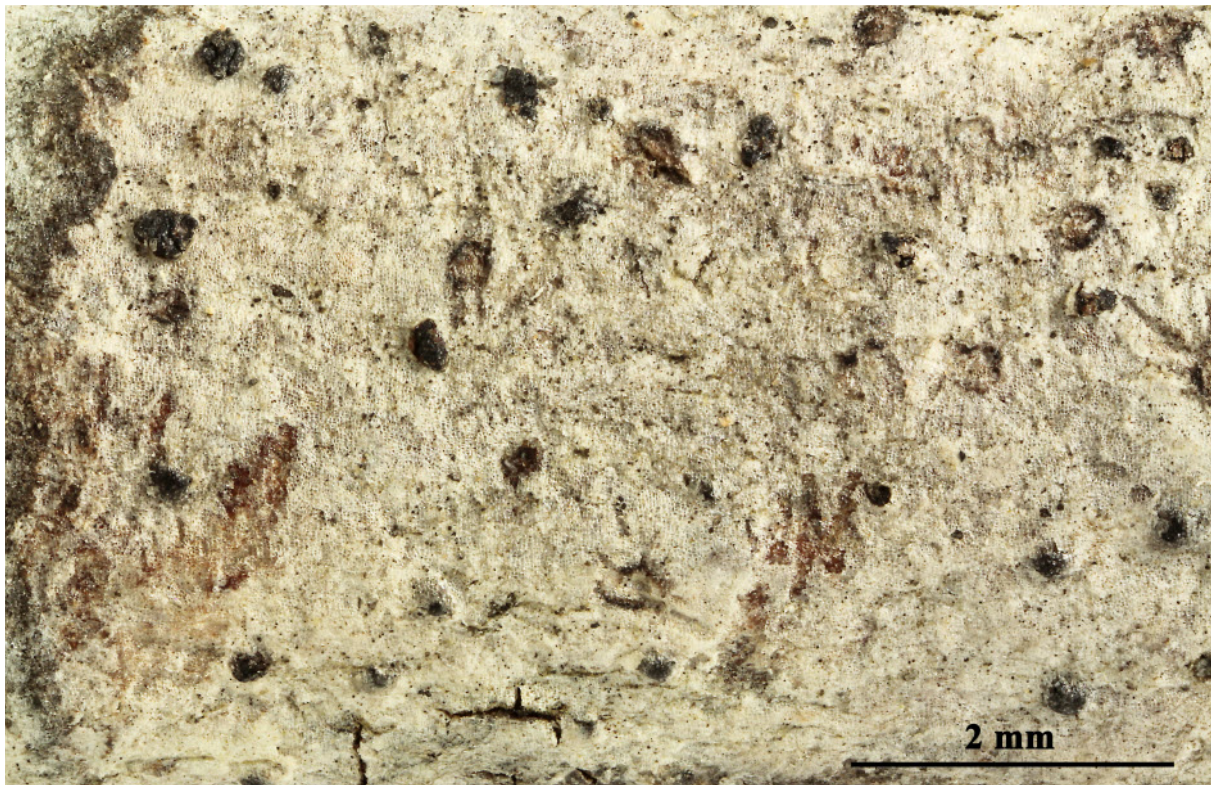


*Anisomeridium triseptatum* Aptroot & M. Cáceres, Lichenologist 45(6): 765 (2013)

Thallus not corticate, smooth, continuous, thin, whitish grey, surrounded by a black prothallus line; algae trentepohloid. Ascomata perithecioid, simple, dispersed, ampulliform to triangular, emergent, 0.2-0.3 mm wide, 0.3-0.4 mm long, black. Ostioles black, lateral. Hamathecium hyaline, densely anastomosing above the asci, not interspersed. Asci cylindrico-clavate, IKI-. Ascospores 8/ascus, hyaline, (1-)3-septate, often constricted at the middle septum, 25-30 x 7.5-10.0  $\mu\text{m}$ . Pycnidia not observed. Chemistry: Thallus K-, UV-. TLC: No secondary substances detected.

[ABL15723], Brazil, Rondonia, Estação Ecológica de Cuniã, km 760 on road BR 319, N of Porto Velho. On tree bark in primary rain forest, on twig. 8°02'44" S, 63°29'11" W, 100 m. Leg. M. Cáceres & A. Aptroot (no 15723), 20.11.2012, det. A. Aptroot, 2012. ISOTYPE.

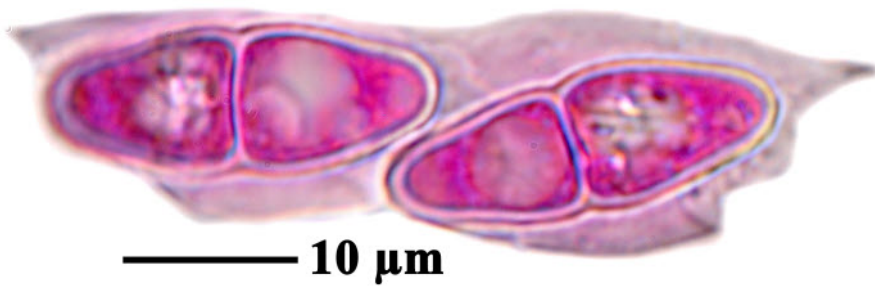
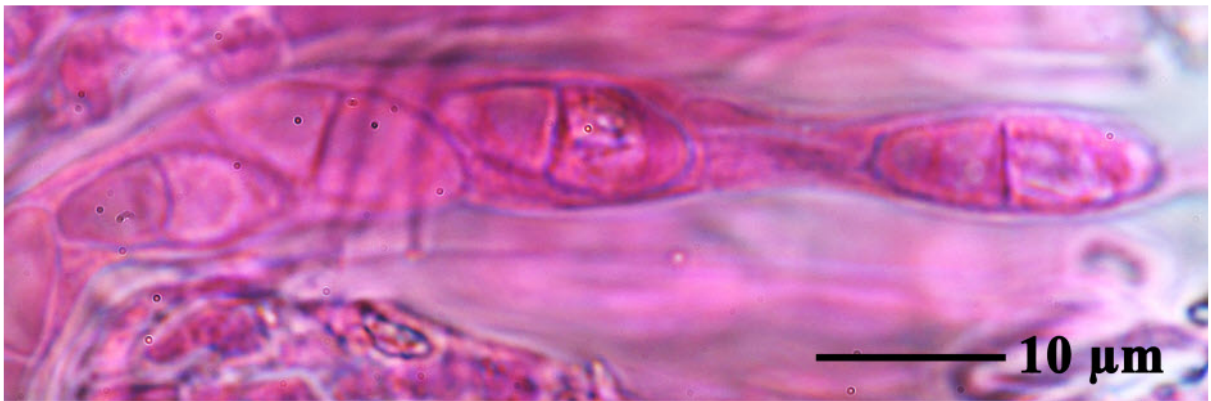
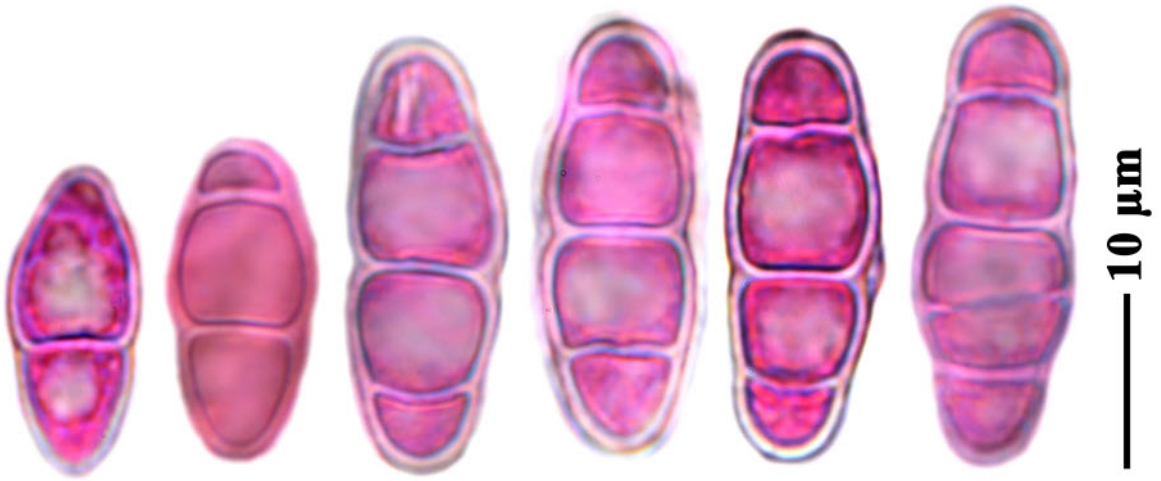






*Anisomeridium triseptatum*





*Anisomeridium triseptatum*