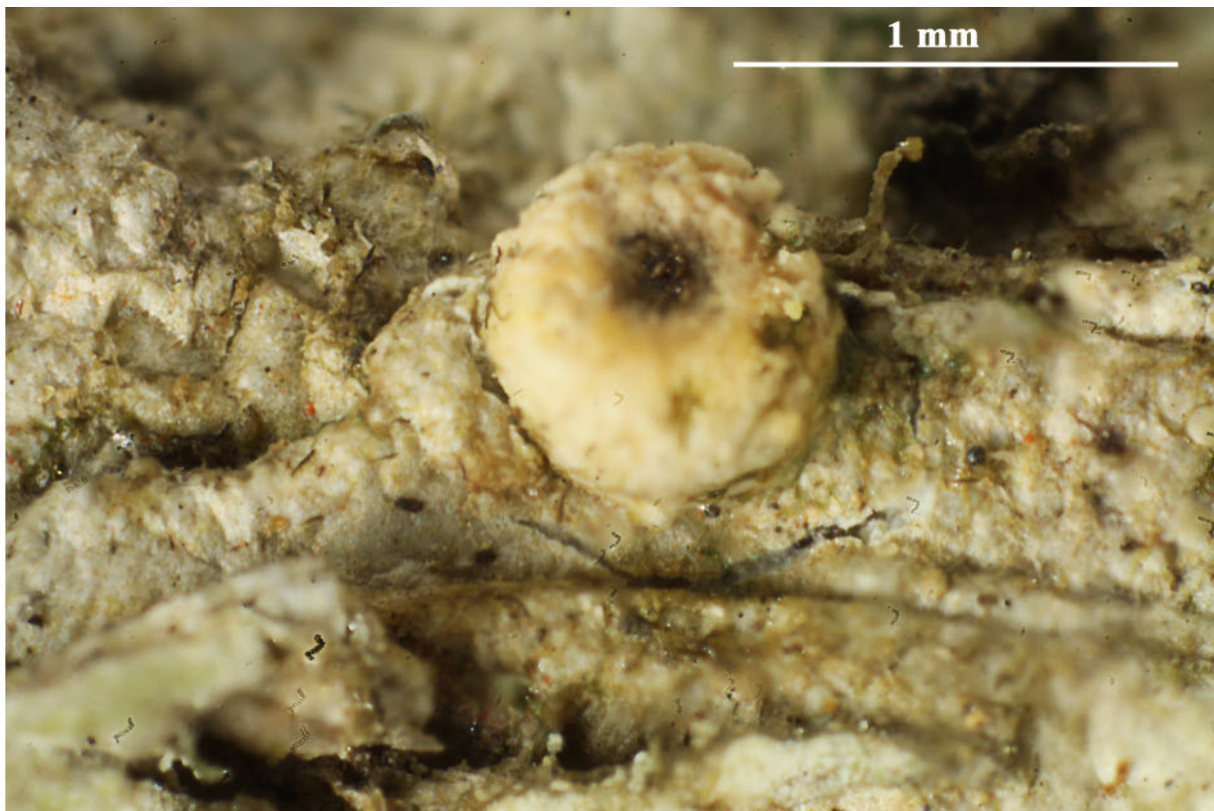
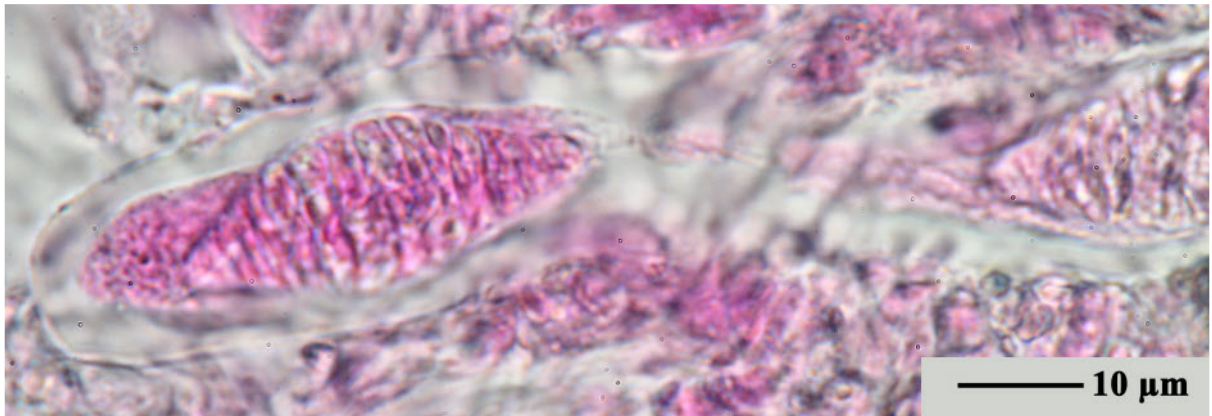
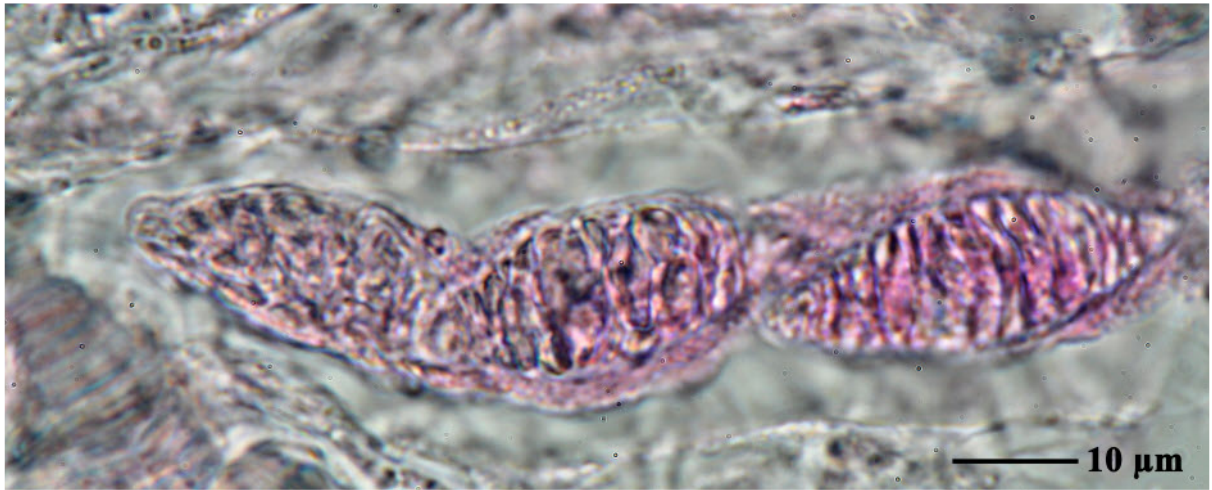
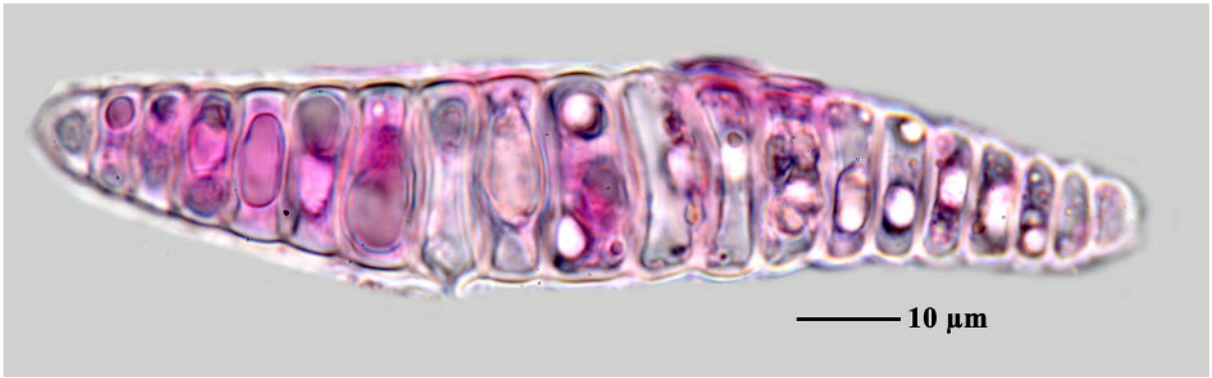


*Aspidothelium ornatum* Lücking, Willdenowia 29(1/2): 301 (1999)

Thallus epiphyllous, crustose, continuous but with gaps and marginally dispersed, algiferous patches connected by a thin, translucent prothallus, smooth, greyish green, up to 20 mm diam.; phycobiont a species of *Chlorococcaceae*. Perithecia sessile, subglobose and basally constricted, their whole surface except for a small portion around the ostiole covered by a spongiose layer formed by outgrowths of the perithecial wall, which are indistinctly arranged in 7-10 longitudinal rows, 0.5-0.8 mm diam., whitish except for the ostiole indicated by a narrow, brownish grey spot. Outer perithecial wall paraplectenchymatous, laterally up to 100 µm thick, externally with abundant, irregular appendages formed by agglutinate hyphae, which give the perithecial surface a spongiose appearance; inner wall prosoplectenchymatous; paraphyses, periphyses and asci as in *Aspidothelium fugiens*; asci 180-215 x 40-50 µm. Ascospores usually 8/ascus, rarely less, fusiform, transversely septate with c. 20-35 septa, hyaline, 110-140 x 15-20 µm.

[ISE27980], Brazil, Santa Catarina, Sao Francisco do Sul, Parque Estadual do Acaraí, in restinga vegetation on tree. 26°20'44" S, 48°33'47" W, 10 m. Leg. M. Cáceres & A. Aptroot (no 27980), 10.10.2015, det. A. Aptroot, 2015.





*Aspidothelium ornatum*