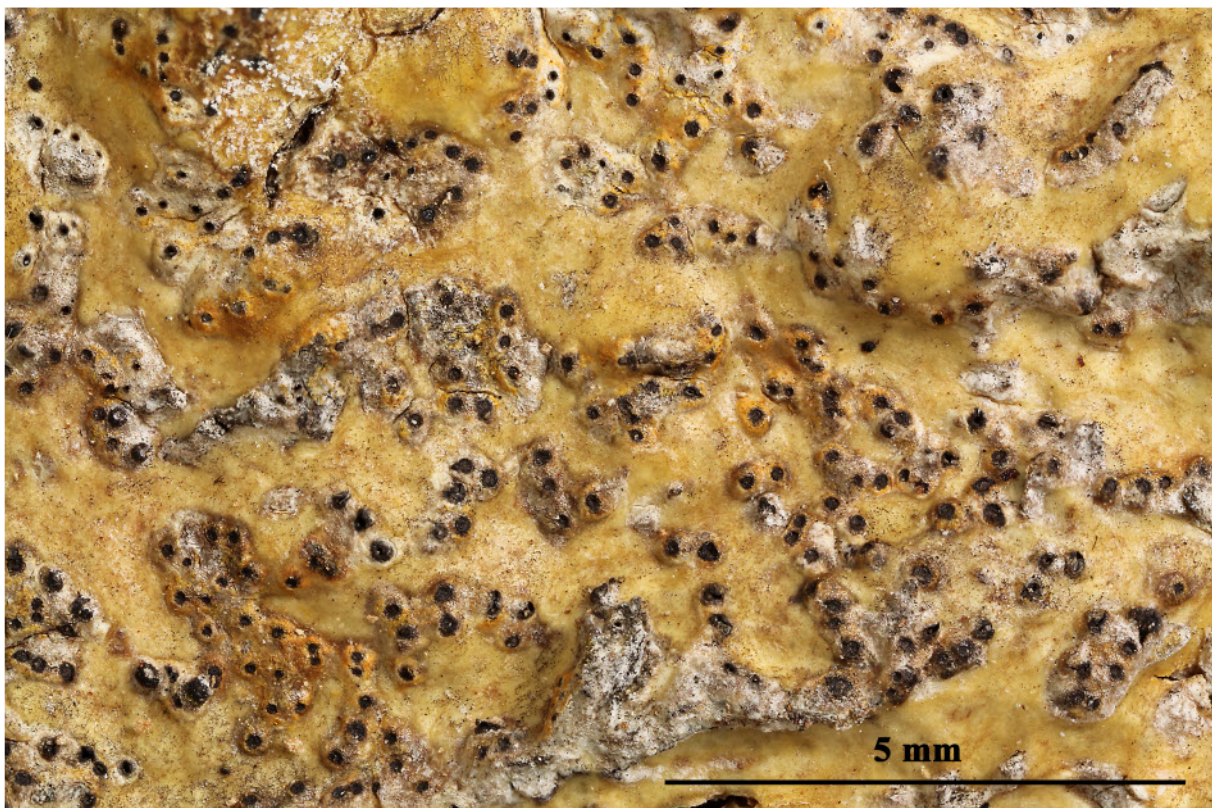
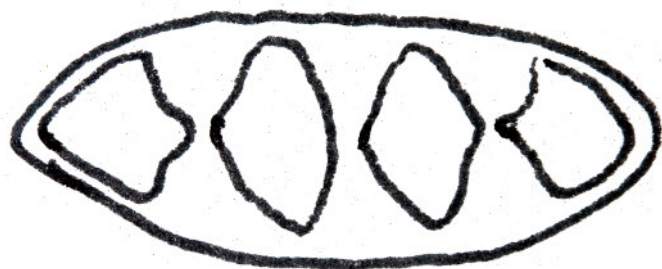


Astrothelium aenascens Aptroot, in Aptroot, Ertz, Etayo Salazar, Gueidan, Mercado Diaz, Schumm & Weerakoon, Lichenologist 48(6): 611 (2016)

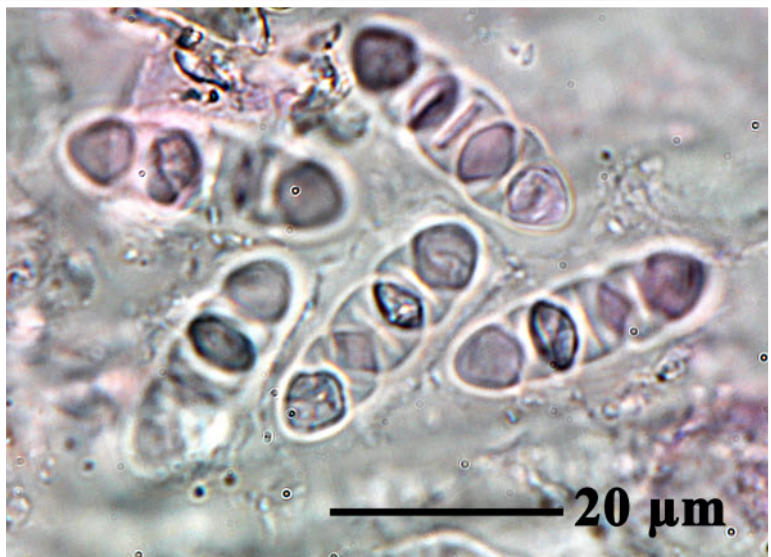
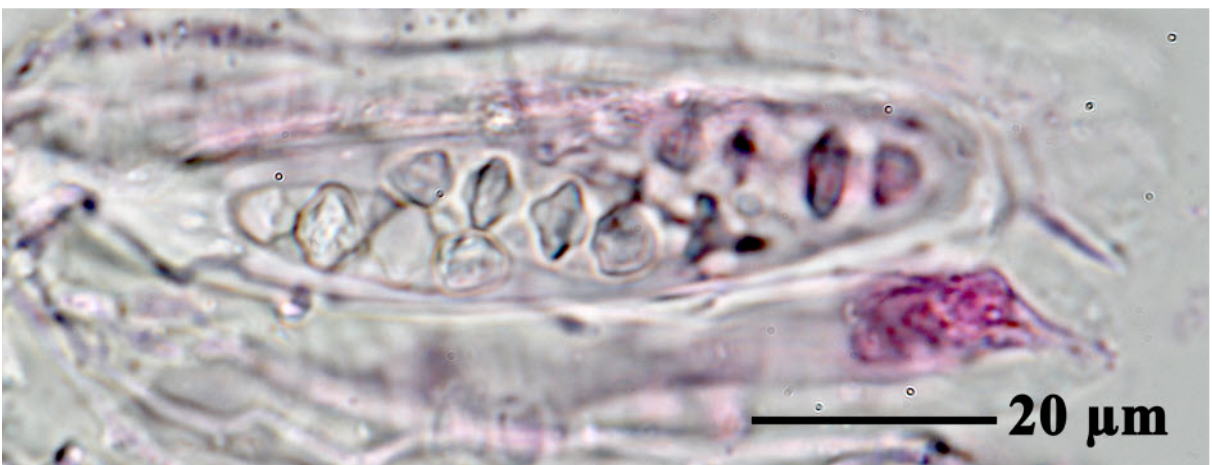
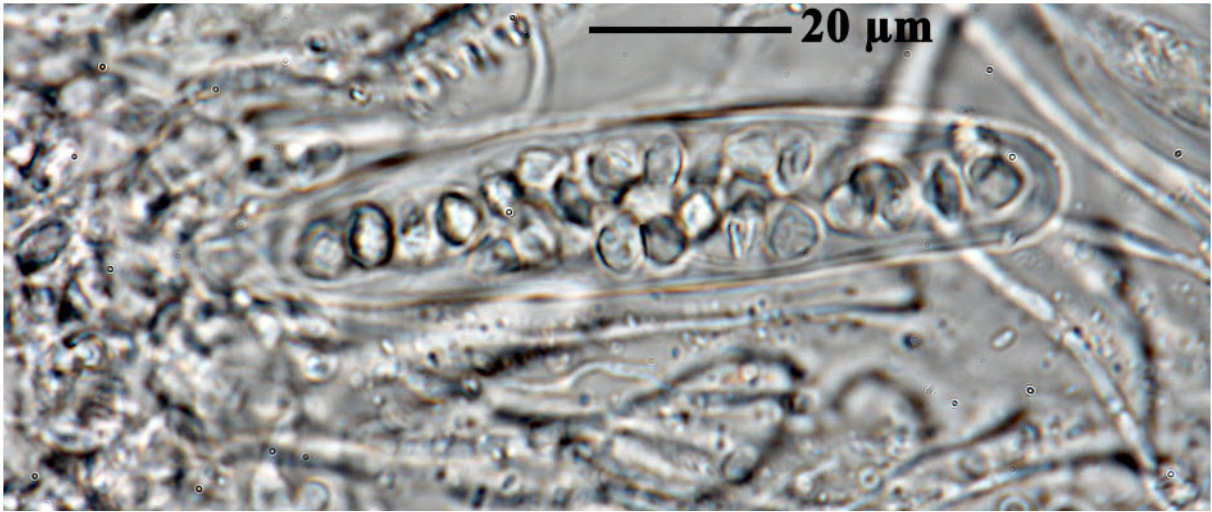
Thallus corticate, smooth, somewhat shiny, olive-green to olive-grey, not surrounded by a prothallus. Ascomata globose, 0.8-1.2 mm diam., immersed in groups of 2-5 in pseudostromata with a surface different from the thallus. Ostioles apical, not fused, flat to concave, brown. Hamathecium interspersed with oil globules. Ascospores 8/ascus, 20-25 x 6-9 μm , 3 septate, hyaline, fusiform, lumina diamond-shaped. Chemistry: thallus surface UV-, thallus and medulla K-, pseudostroma surface UV+pink to orange, medulla of pseudostromata K+ blood red. TLC: one anthraquinone

[Streimann15083], Papua New Guinea, Central Province, Narirogi Creek, on Varirata National Park Road, 27 km ENE of Port Moresby. 9°25' S, 147°24' E, 440 m. Remnant lowland forest on sides of stream, on *Casuarina papuana* trunk. Leg. H. Streimann & E.K. Naoni, 1.02.1981, det. A. Aptroot. ISOTYPE.

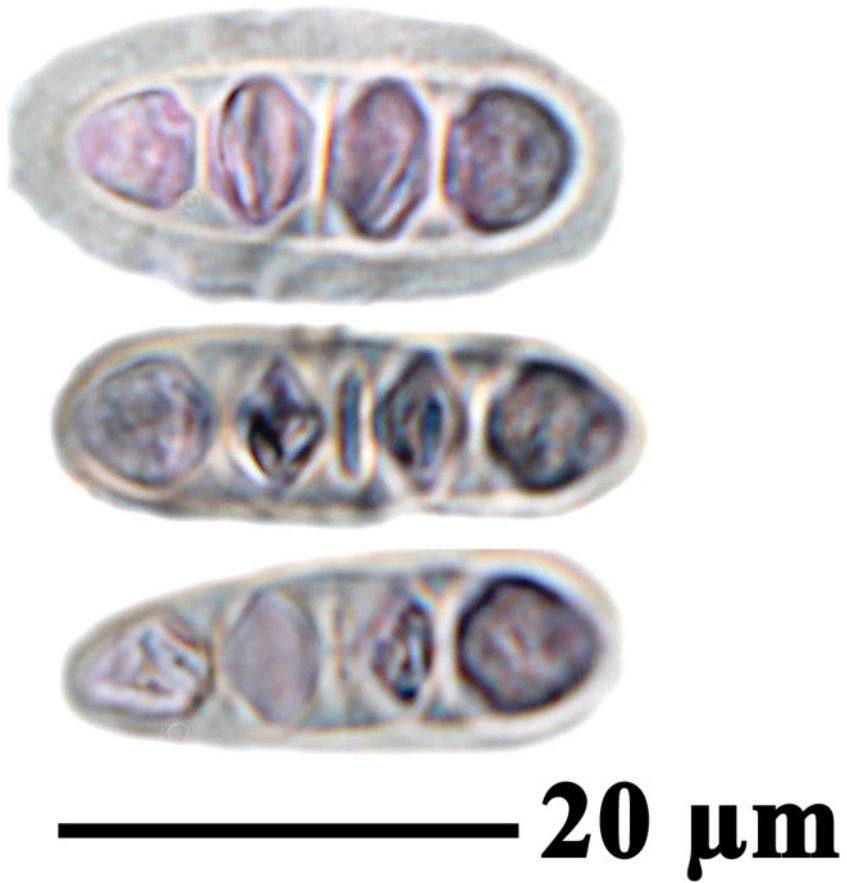




Astrothelium aenascens



Astrothelium aenascens



Astrothelium aenascens