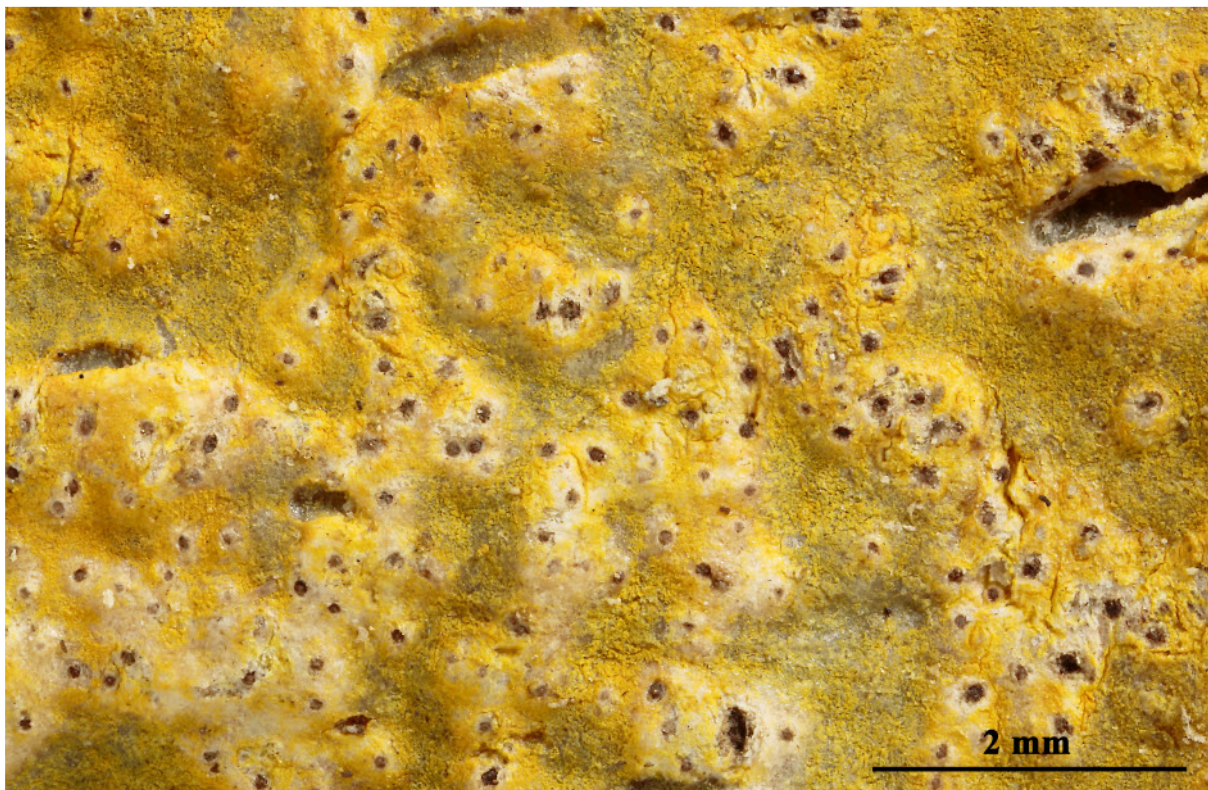


*Astrothelium aeneum* (Eschw.) Aptroot & Lücking, Lichenologist 48(6): 821 (2016)  
= *Pseudopyrenula aenea* (Eschw.) Vain., Acta Soc. Fauna Flora fenn. 7(no. 2): 207 (1890)  
= *Trypethelium aeneum* (Eschw.) Zahlbr., in Engler & Prantl, Nat. Pflanzenfam., Teil. I (Leipzig) 1(1\*): 70 (1903)  
= *Verrucaria aenea* Eschw., in Martius, Icon. Plant. Cryptog. 2: 15 (1834) [1828-34]

[ABL48933], Brazil, Sena Madureira, Reserva extratevista Cazumbá-Iracema, Comunidade Cuidado, on tree bark in disturbed tropical rain forest. 09°07' S, 68°59' W, 150 m. Leg. A. Aptroot (no 48933), M. Cáceres & J. Cavalcante, 09.04.2019. Det. A. Aptroot. 2019.





*Astrothelium aeneum*