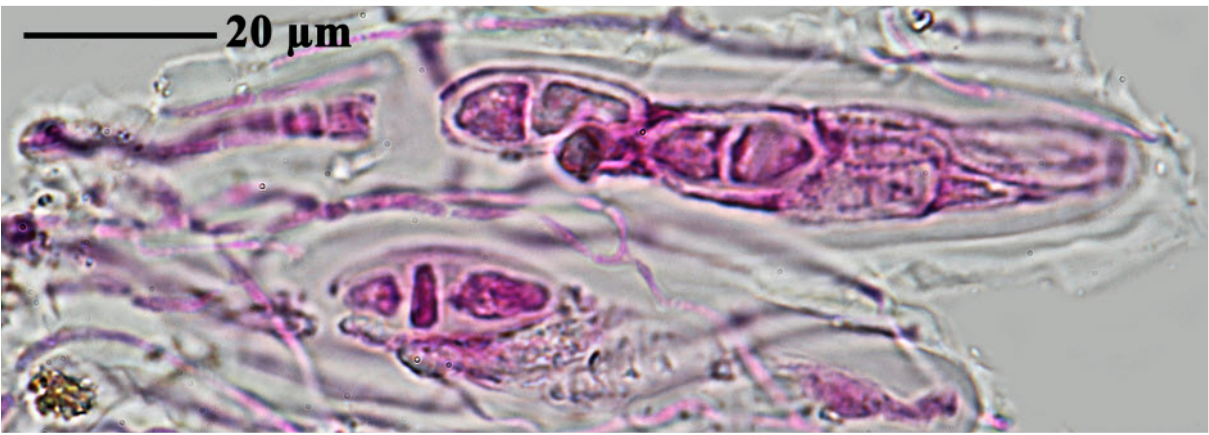


Astrothelium bullatothallinum Aptroot & Sipman, in Aptroot, Sipman, Barreto, Nunes & Cáceres, Lichenologist 51(1): 28 (2019)

Thallus corticate, smooth, bullate, somewhat shiny, c. 0.2 mm thick, yellowish orange, intermixed with patches of a grey prothallus. Ascomata globose, 0.3-0.5 mm diam., in groups of 2-15 in lines or in irregular groups, with a brown surface with orange pruina, different from the thallus, distinctly raised above the thallus. Ostioles apical, not fused, flat to concave. Hamathecium not interspersed. Ascospores 8/ascus, hyaline, 3-septate, 20-25 x 6-9 μm , lumina partly diamond-shaped, IKI-. Chemistry: thallus UV-, ascomata UV+ red, yellow pigment on ascomata K+ blood red. TLC: an anthraquinone, probably parietin.

[Sipman26957], Venezuela, Estado Bolvar, Cerro Guaiquinima, in central part of upper plateau, along Rio Carapo (near camp 3-nuevo). Rocky slope with low forest in deep clefts and along the river. 5°49' N, 63°32' W, 800 m. Leg. H. Sipman (no 26967), 11.02.1990. HOLOTYPE.





Astrothelium bullatothallinum