

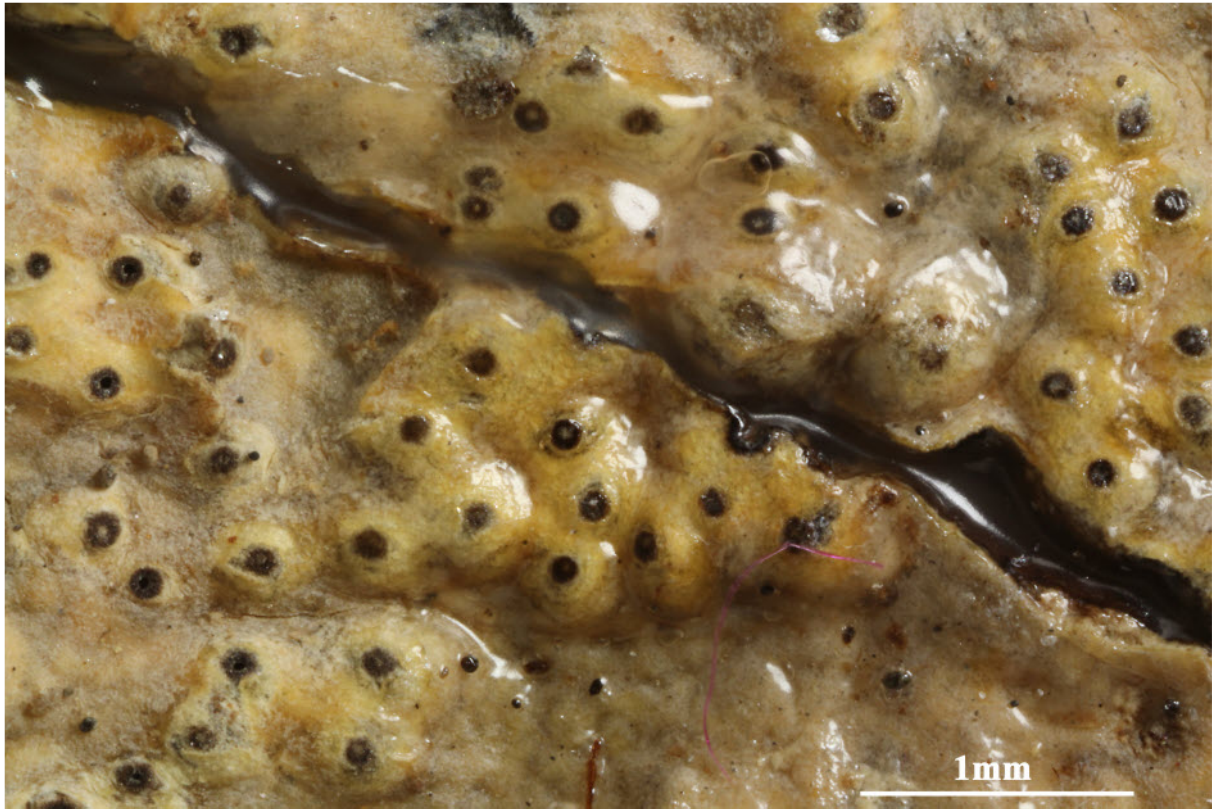
*Astrothelium cinereorosellum* (Kremp.) Aptroot & Lücking, Lichenologist 48(6): 853 (2016)  
= *Trypethelium cinereorosellum* Kremp. [as 'cinereo-rosellum'], Nuovo G. bot. ital. 7(1): 56 (1875)  
= *Trypethelium flavocinereum* Makhija & Patw., J. Hattori Bot. Lab. 73:198 (1993)

Thallus corticate, pale greenish grey to yellowish or whitish, smooth to uneven. Ascomata with apical ostioles, solitary or forming irregular groups or lines but not distinctly pseudostromatic, 0.3-0.5 mm diam., erumpent to prominent, covered by thallus except dark ostiole. Ascospores 8/ascus, 5-9 septate, hyaline, fusiform, (33-)40-50(-73) x 8-14  $\mu$ m, IKI-. Chemistry; thallus UV+ yellow, K-, with lichexanthone.

[AMH76672], India, Kerala, Cardamom Hills, Munnar-Devicoolam road. Leg. Patwardhan & Prabhu (no AMH 76672), 25.01.1976. ISOTYPE of *Trypethelium flavocinereum*.

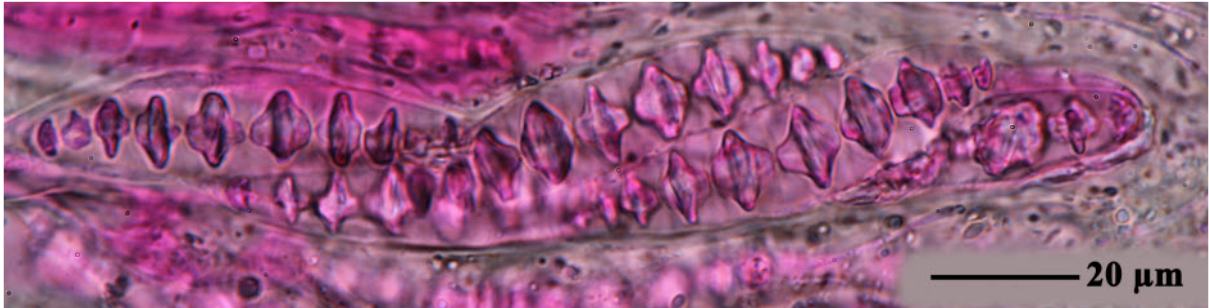
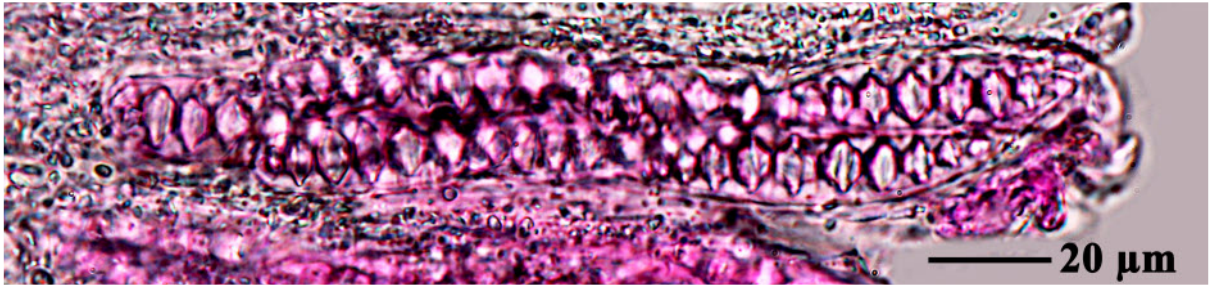
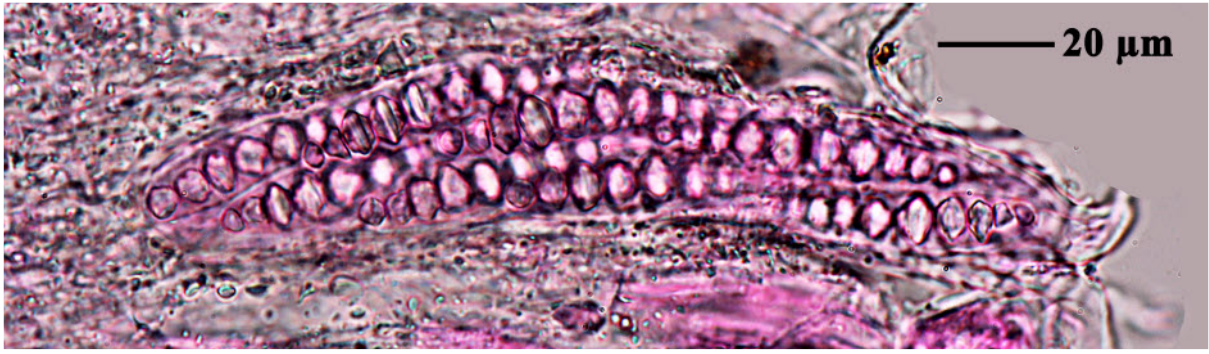






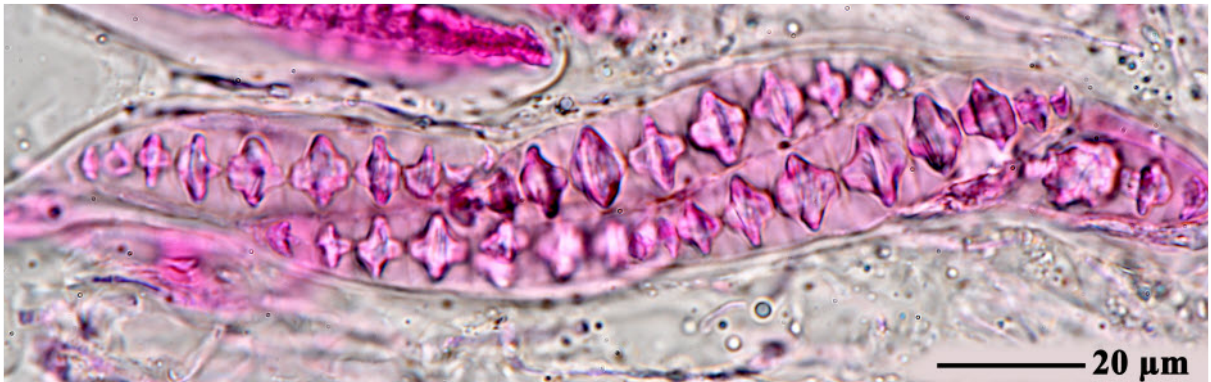
*Astrothelium cinereorosellum*





*Astrothelium cinereorosellum*





*Astrothelium cinereorosellum*