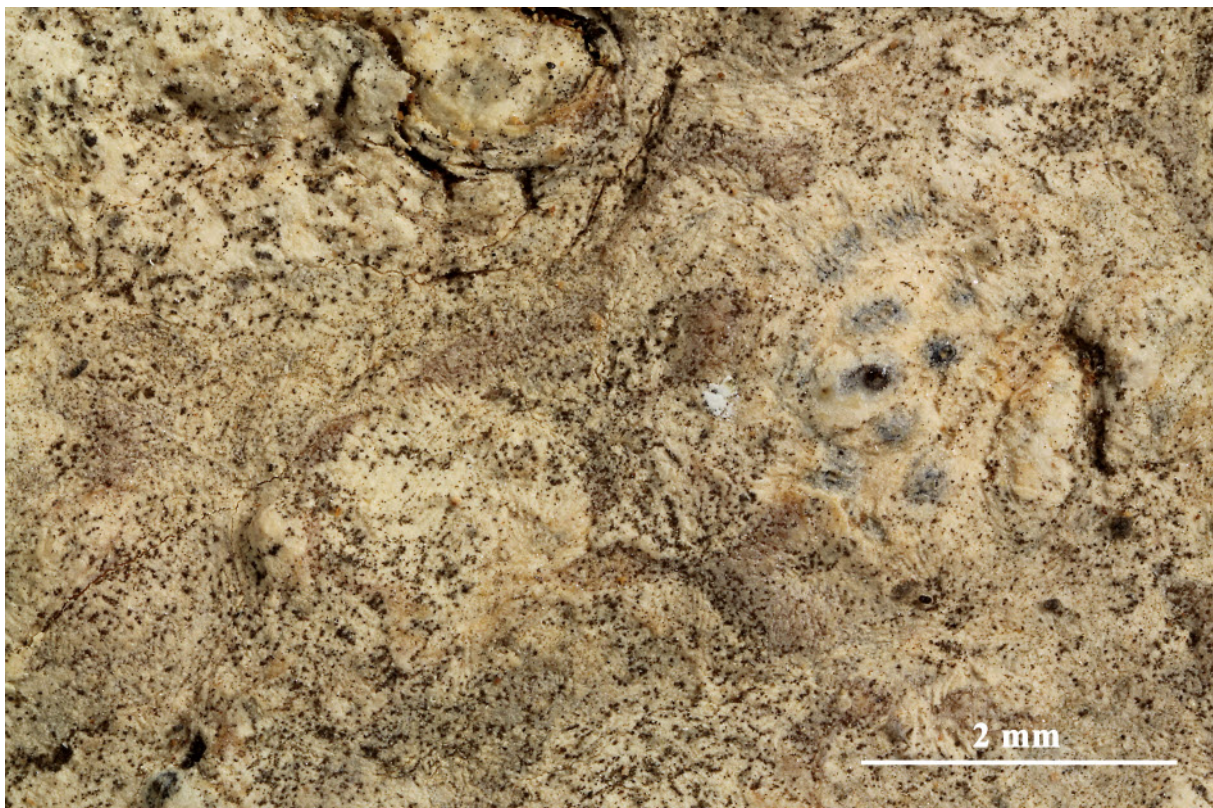
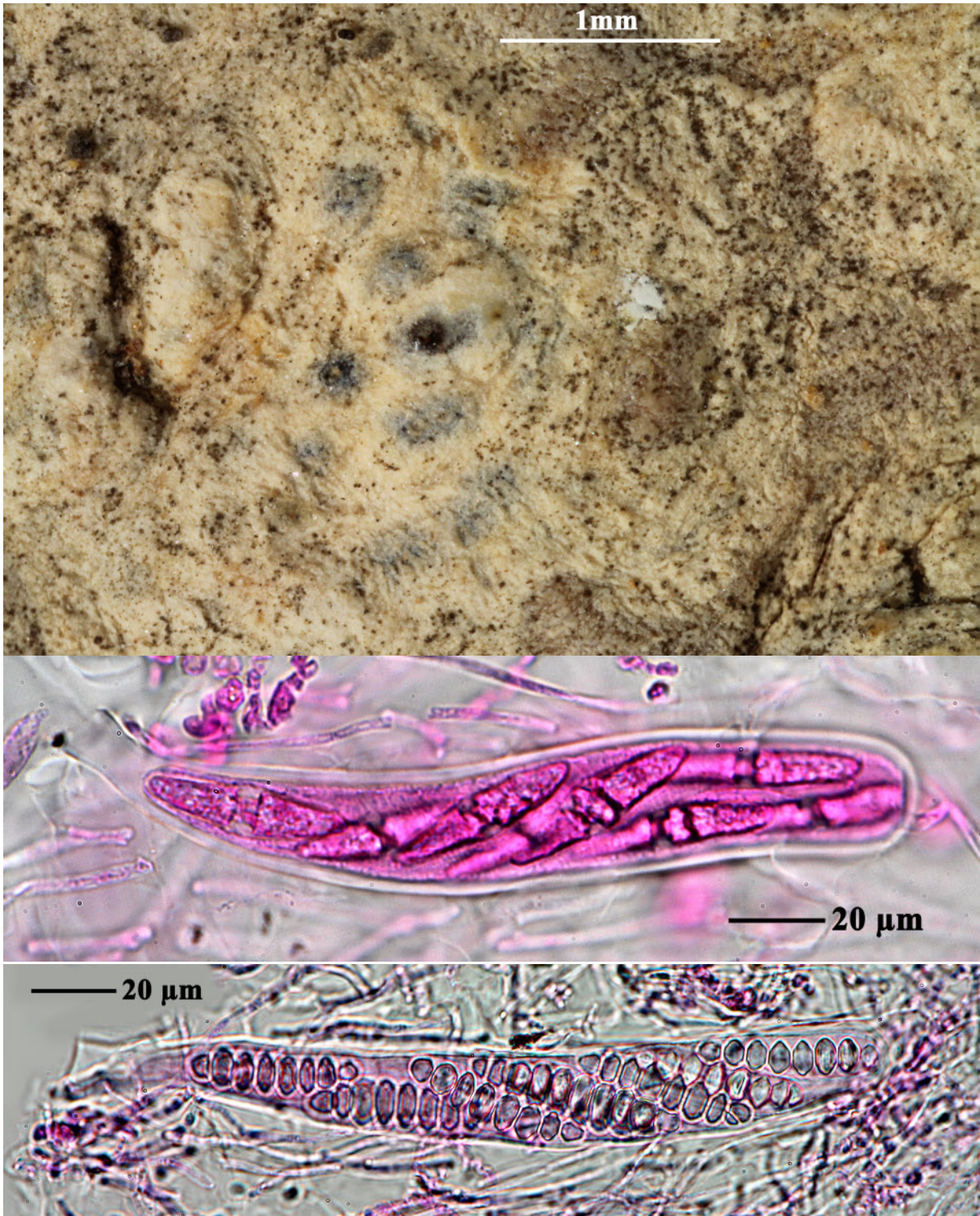


- Astrothelium cinereorosellum* (Kremp.) Aptroot & Lücking, Lichenologist 48(6): 853 (2016)
= *Trypethelium cinereorosellum* Kremp. [as 'cinereo-rosellum'], Nuovo G. bot. ital. 7(1): 56 (1875)
= *Trypethelium flavocinereum* Makhija & Patw., J. Hattori Bot. Lab. 73:198 (1993)
= *Trypethelium microstomum* Makhija & Patw., J. Hattori Bot. Lab. 73: 201 (1993)

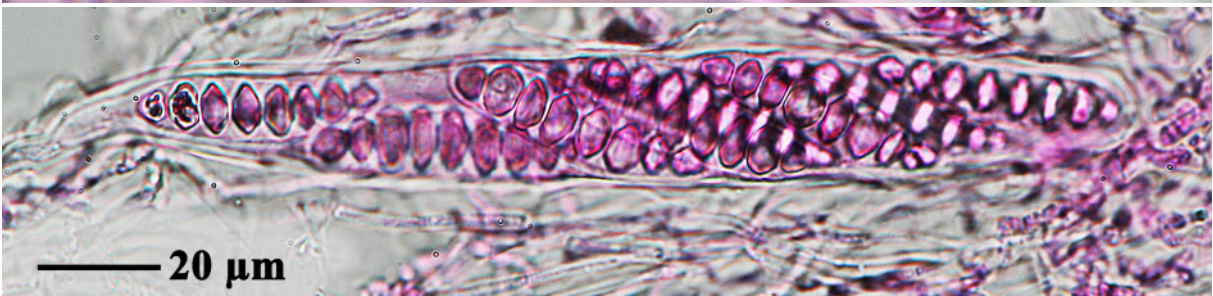
Thallus corticate, pale greenish grey to yellowish or whitish, smooth to uneven. Ascomata with apical ostioles, solitary or forming irregular groups or lines but not distinctly pseudostromatic, 0.3-0.5 mm diam., erumpent to prominent, covered by thallus except dark ostiole. Ascospores 8/ascus, 5-9 septate, hyaline, fusiform, (33-)40-50(-73) x 8-14 μm , IKI-. Chemistry; thallus UV+ yellow, K-, with lichexanthone.

[AMH85663], India, Andaman Islands, South Andaman, Baratang, Bishmu Nala. Leg. Patwardhan & Nagarkar (no AMH85663). Part of HOLOTYPE of *Trypethelium microstomum*.





Astrothelium cinereorosellum



Astrothelium cinereorosellum