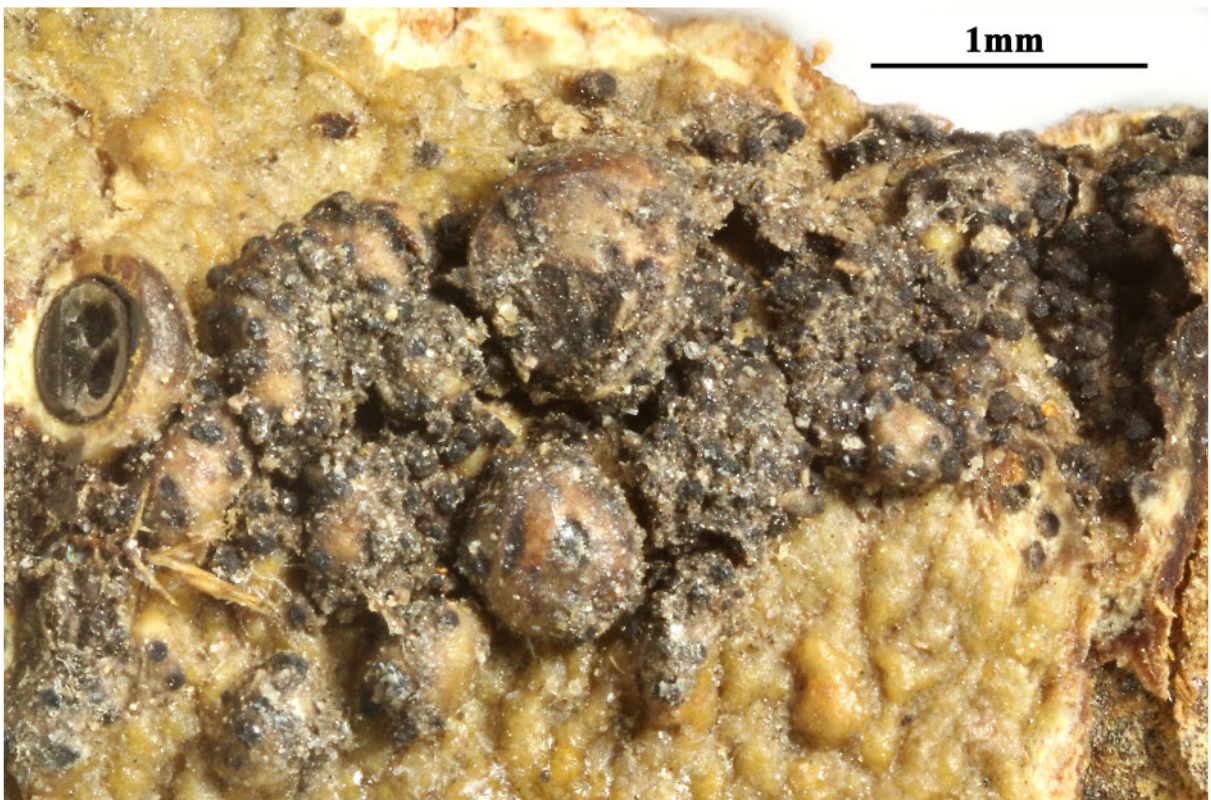


Astrothelium dissimilum (Makhija & Patw.) Aptroot & Lücking, Lichenologist 48(6): 858 (2016)
= *Trypethelium dissimilum* Makhija & Patw., J. Hattori bot. Lab. 73: 195 (1993)

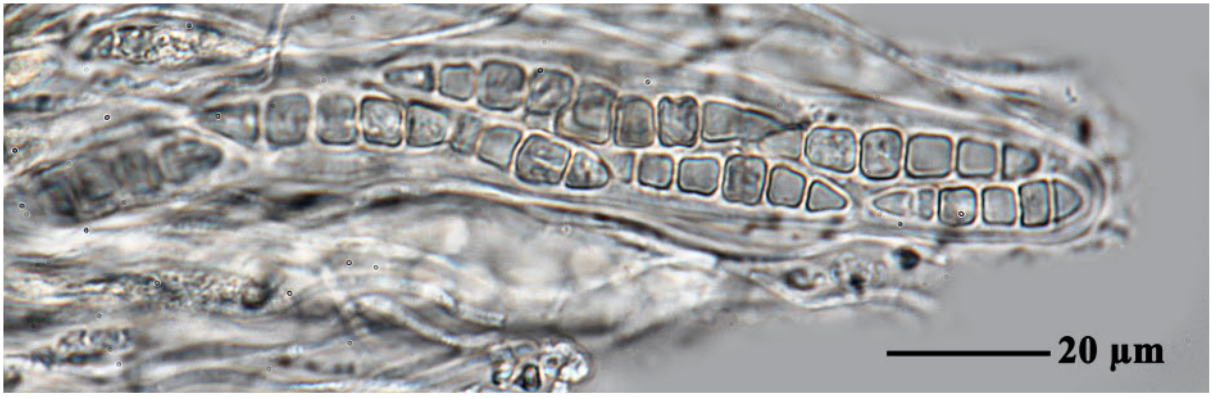
Thallus corticate, olive-green, uneven. verrucose. Ascomata with apical ostioles, confluent to pseudostromatic; pseudostromata 0.8-2 mm diam., prominent, dark brown, internally with yellow, K+ purple crystals. Hamathecium clear. Ascospore 8/ascus, (3-)5(-9)-septate, fusiform, hyaline, 25-40 x 6-9 μm , IKI-. Chemistry: thallus and pseudostromata UV-, externally K-; pseudostromata internally K+ red, with anthraquinone.

[AMH771169], India, Meghalaya, Mawsyhrum, leg. Patwardhan & Nagarkar (no AMH771169), 30.10.1997. Part of the HOLOTYPE.





Astrothelium dissimilum



Astrothelium dissimilum