

Astrothelium macrocarpum (Fée) Aptroot & Lücking, Lichenologist
48(6): 867 (2016)

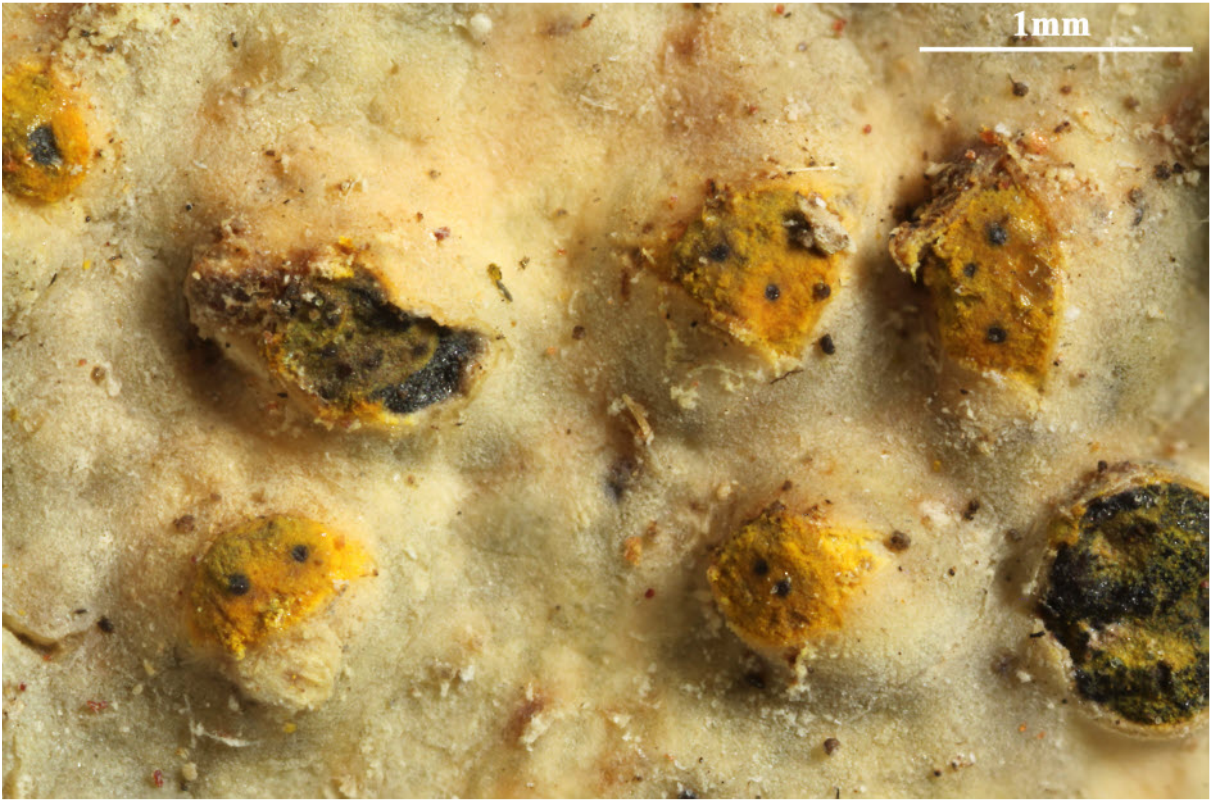
= *Porina macrocarpa* Fée, Essai Crypt. Exot. (Paris): 81 (1825) [1824]

= *Porophora macrocarpa* (Fée) Spreng., Syst. veg., Edn 16 4(1): 241 (1827)

Thallos corticate, olive-green to yellowish, smooth to uneven. Ascomata several chambers joined with excentric, fused ostioles; joined ascomata pseudostromatic; pseudostromata 0.5-1 mm diam., erumpent to prominent, conical with flattened top, covered by thallus with lateral part whitish and upper part with yellow-orange pigment and dark ostiole. Hamathecium clear. Ascospores 8/ascus, fusiform-ellipsoid, 3 septate, hyaline, 21-28 x 7-11 μm , IKI-. Chemistry: Thallus UV+ yellow, K-, with lichexanthone; pseudostromata with yellow-orange, K+ purple, UV+ red anthraquinone, probably parietin.

[ABLISE48621], Brazil, Bahia, Itamarajú, Monte Pascual, on tree bark in cerrado forest, 16°51'57" S, 39°24'59" W, 130 m. Leg. M. Cáceres & A. Aptroot (no ISE 48621), 18.02.2019, det A. Aptroot, 2019.





Astrothelium macrocarpum