

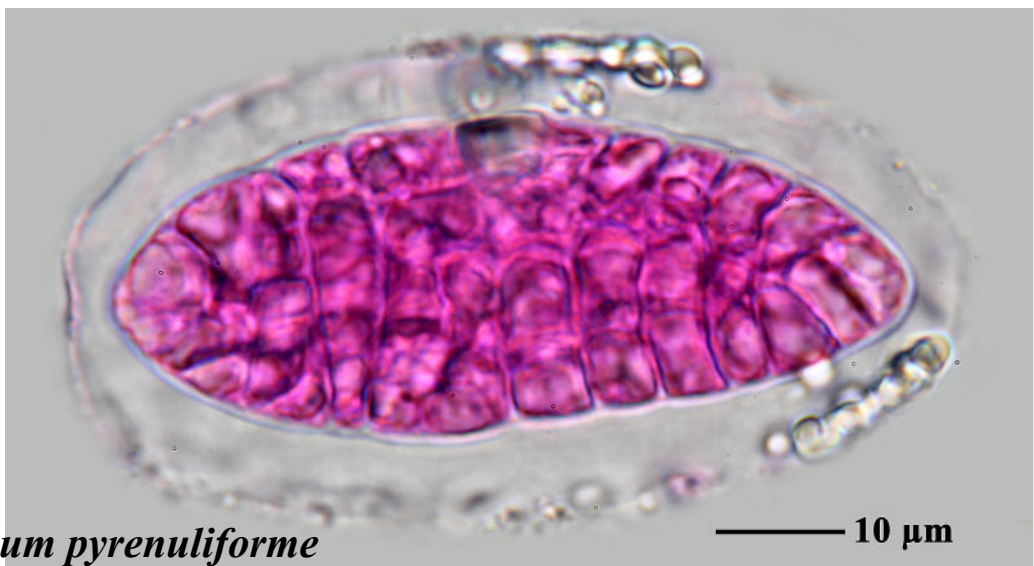
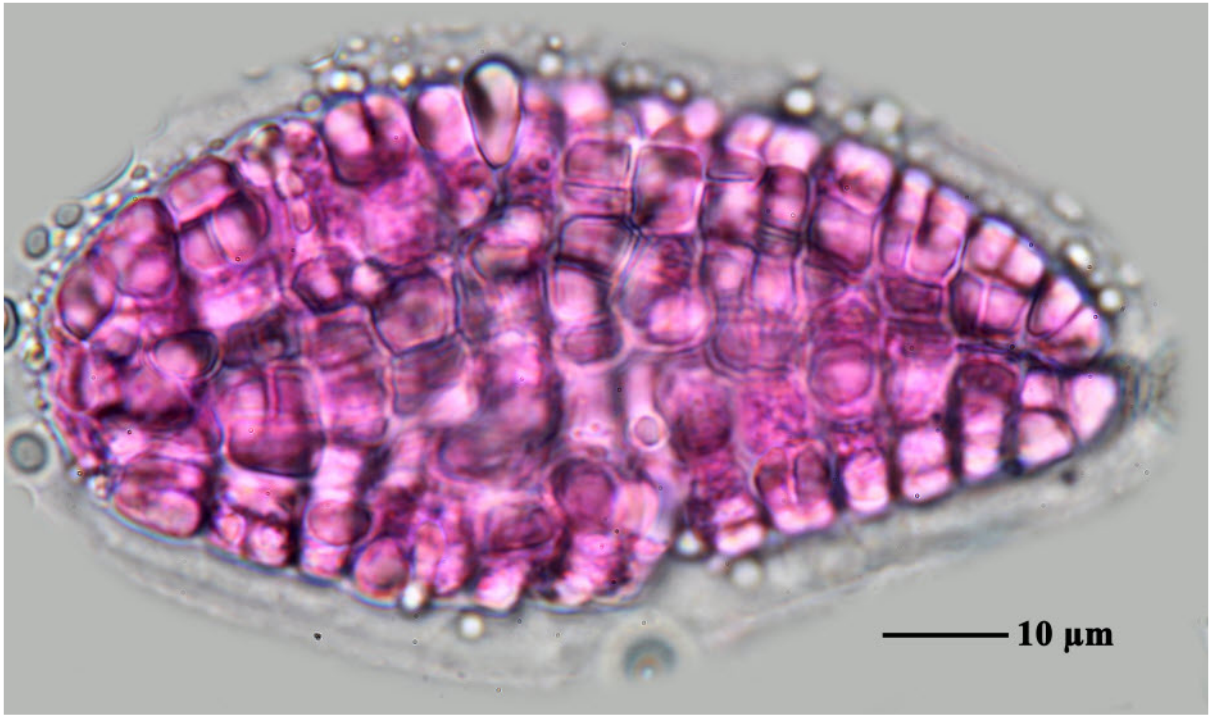
Astrothelium pyrenuliforme Flakus & Aptroot, in Flakus, Kukwa & Aptroot, Lichenologist 48(6): 673 (2016)

Thallus corticate, with corticiform layer \leq c. 90 μ m thick, smooth, somewhat shiny, continuous, not including swellings of the host bark, grey-green, with small to irregular white verrucae due to the presence of crystals (calcium oxalate) below cortical layer, not surrounded by a black prothallus; pseudocortex layer covering verrucae usually breaking and forming pseudocyphellae. Ascomata globose, 0.4-0.8 mm diam., mostly single, immersed in the thallus to half exposed, ascomatal verrucae barely to distinctly raised above the thallus, hemispherical with sloping sides, black, inside without a coloured layer, thalline cover not containing bark tissue, but ascomatal base often immersed in the bark. Wall fully carbonized, not differentiated into excipulum and involucrellum, thicker in the upper part and much thinner at the base. Ostioles excentric, not fused, flat, black, sometimes surrounded by a white spot. Hamathecium interspersed with hyaline oil globules. Ascospores 1-2/ascus, hyaline, IKI-, densely muriform, without distinctly thickened median septa, broadly ellipsoid to fusiform, 86-135 x 27-55 μ m, ends rounded, lumina diamond-shaped. Chemistry: Thallus surface and medulla UV-, K-; pseudostromata surface and inner part UV-, K-. TLC: undetermined xanthone similar to lichexanthone (trace) detected.

[Flakus23568], Bolivia, Santa Cruz, Cordillera, Pnanmi Kaa-Iya del Gran Chaco, near Peto Blanco, park guards station, Chiquitano forest, 18°56'26" S, 60°22'39" W, 340 m. Leg. A. Flakus (no 23568), 5.12.2011, det. A. Aptroot. ISOTYPE.



Astrothelium pyrenuliforme



Astrothelium pyrenuliforme



Astrothelium pyrenuliforme



Astrothelium pyrenuliforme