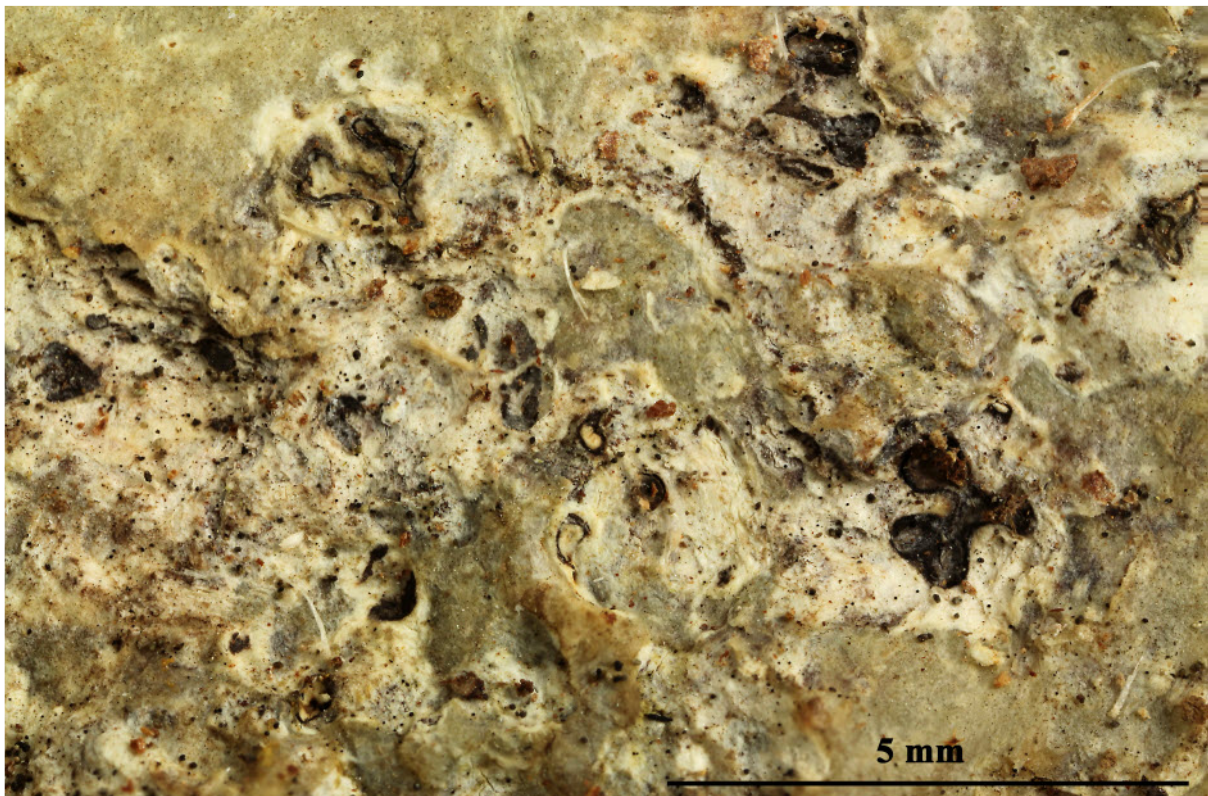


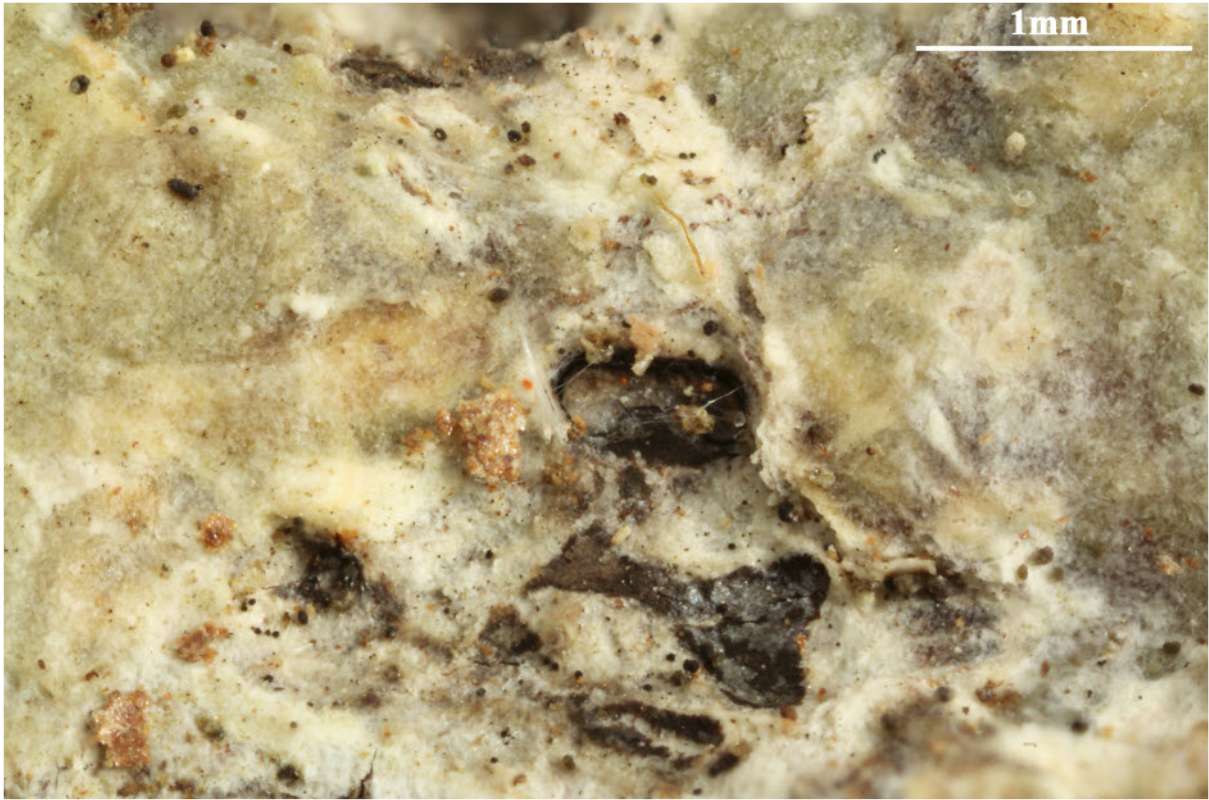
*Astrothelium sepultum* Mont., Anns Sci. Nat., Bot., sér. 2 19: 74 (1843)  
= *Laurera sepulta* (Mont.) O.E. Erikss., Op. bot. 60: 50 (1981)  
= *Cryptothelium sepultum* (Mont.) A. Massal., Atti Inst. Veneto Sci. lett.,  
ed Arti, Sér. 3 5: 335 (1860) [1859-1860]  
= *Heufleria sepulta* (Mont.) Trevis., Flora, Regensburg 44: 23 (1861)

Thallus corticate, greenish grey to pale yellowish brown (lichexanthone colour), smooth to uneven. Ascomata astrothelioid, several chambers joined with excentric, fused ostioles; joined ascomata dispersed to confluent but not distinctly pseudostromatic, 1.0-1.3 mm diam., erumpent, covered by thallus but with upper part whitish and ostiole dark. Hamathecium clear. Ascospores 2/ascus, densely muriform, fusiform, 150-250 x 30-65  $\mu\text{m}$ , with distinctly thickened median septum, hyaline, IKI-. Chemistry: Thallus and usually also ascomata UV+ yellow, with lichexanthone.

[ISE48573], Brazil, Bahia Itamarajú, Monte pascual, on tree bark in palm forest, 16°51'16" S, 39°34'40" W, 30 m. Leg. M. Cáceres & A. Aptroot (no ISE48573), 17.2.2019, det. A. Aptroot 2019.

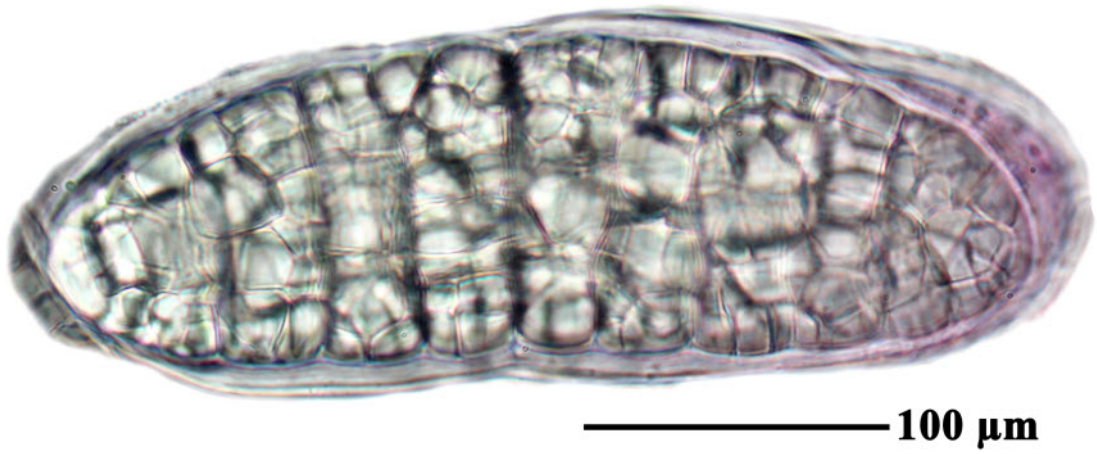
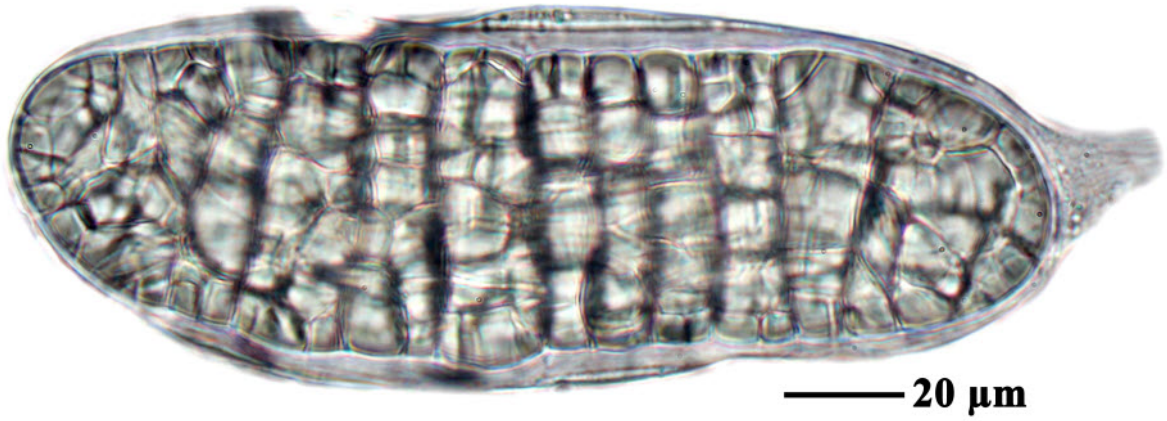






*Astrothelium sepultum*





*Astrothelium sepultum*