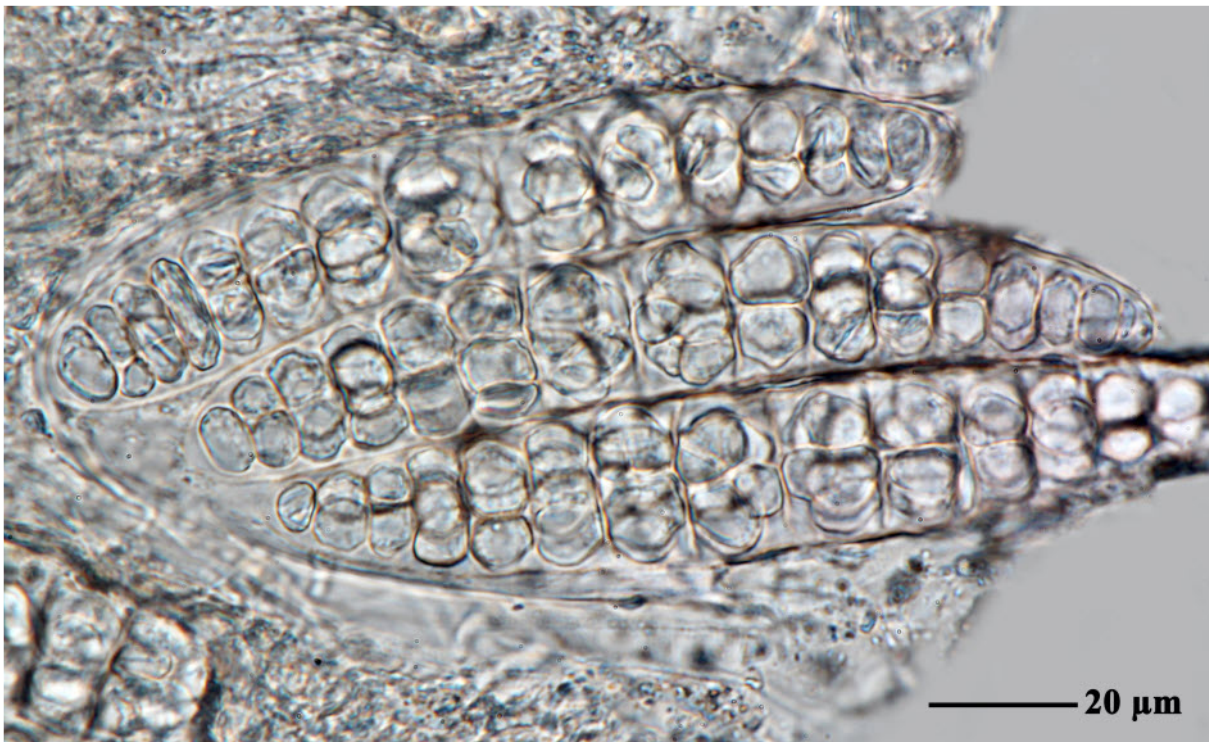


Astrothelium sikkimense (Makhija & Patw.) Aptroot & Lücking, Lichenologist 48(6): 887 (2016)
= *Laurera sikkimensis* Makhija & Patw., Mycotaxon 31(2): 580 (1988)

Thallus corticate, brown, smooth to uneven. Ascomata trypethelioid, with apical ostioles, solitary to irregularly confluent, 1-2 mm diam., immersed to erumpent, covered by thallus except black ostiole surrounded by whitish rim. Hamathecium inspersed. Ascospores 6-8/ascus, muriform, ellipsoid, 120-140 x 25-30 μm , with somewhat thickened median septum, hyaline, IKI-. Chemistry: Thallus and pseudostromata UV-, K-. TLC: no substances detected.

[AMH771970], India, Gangtok, Near Tangshi View Point. Leg. Padwardhan & Nagakar (no AMH771970). ISOTYPE of *Laurera sikkimensis*





Astrothelium sikkimense

