

Astrothelium subdisjunctum (Müll. Arg.) Aptroot & Lücking, Lichenologist 48(6): 890 (2016)
= *Bottaria subdisjuncta* Müll. Arg., Bot. Jb. 6: 395 (1885)
= *Laurera subdisjuncta* (Müll. Arg.) R.C. Harris, Acta Amazon., Supl. 14(1-2): 66 (1986) [1984]

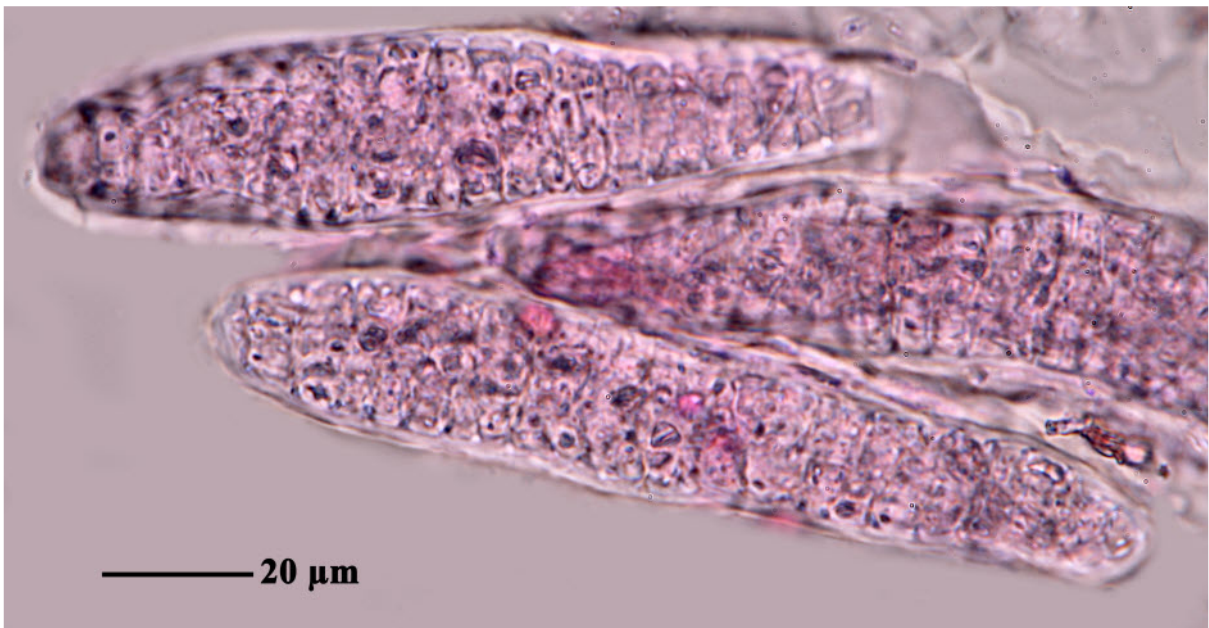
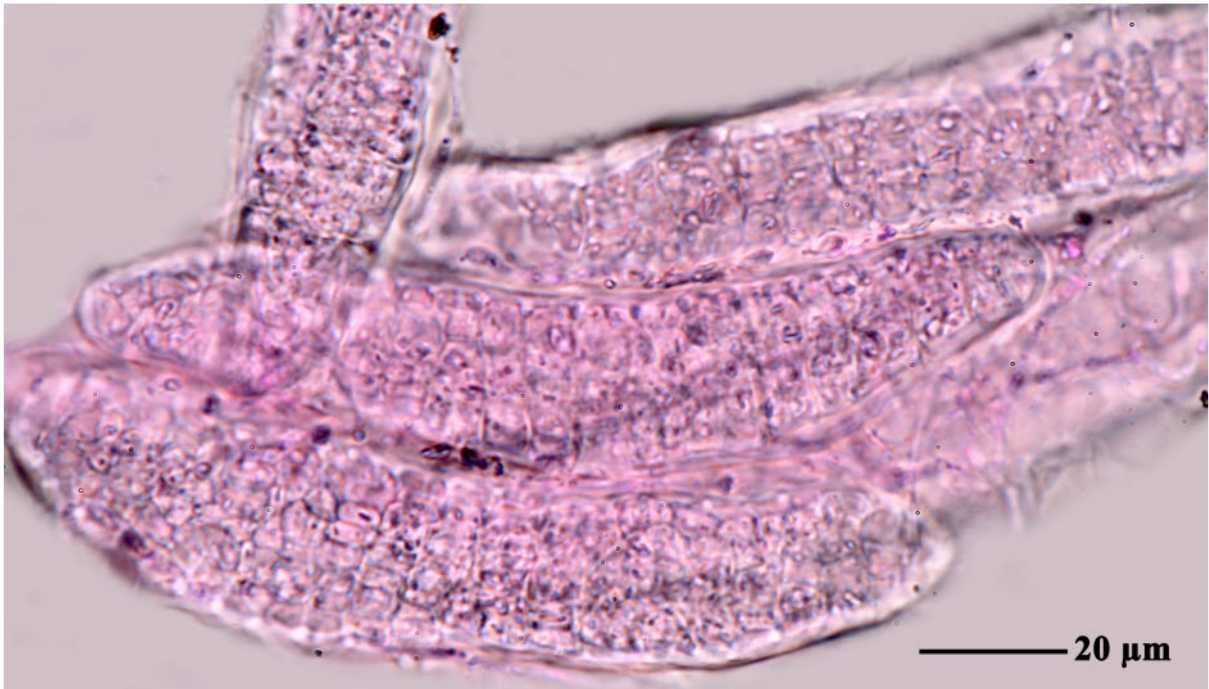
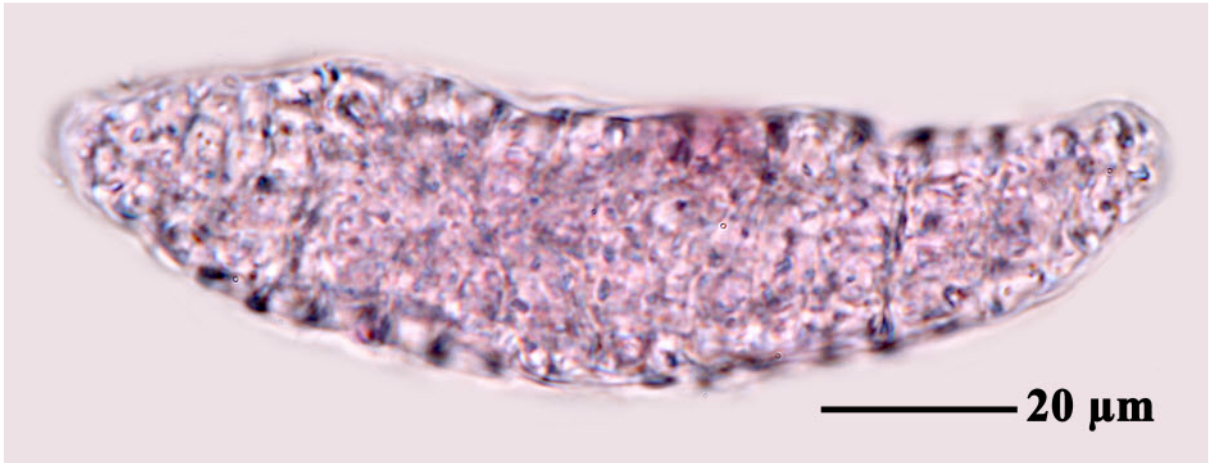
Thallus corticate, olive-green to brownish, smooth to uneven. Ascomata trypethelioid, with apical ostioles, pseudostromatic. Pseudostromata 0.7-1.5 mm broad, immersed-erumpent, irregular to linear and often confluent and reticulate, with ascomata exposed and black. Hamathecium clear. Ascospores 4/ascus, densely muriform, fusiform, 120-175 x 30-45 μm , without distinctly thickened median septum, hyalin, IKI-

[ABL19348], Guiana, Upper Mataroni district, Trail from Kamarang river to PwiPwi mountain, N of Waramadan, Rocky savannah, ca 10 km N of Waramadan. 5°57' N, 60°45' W, 800 m. Leg. H. Sipman & A. Aptroot (no 19348), 28.2.1985, det. A. Aptroot, 1990.





Astrothelium subdisjunctum



Astrothelium subdisjunctum