

Bathelium porinosporum Lücking, M.P. Nelsen & Gueidan, in Lücking, Nelsen, Aptroot, Benatti, Binh, Gueidan, Gutiérrez, Jungbluth, Lumbsch, Marcelli, Moncada, Naksuwankul, Orozco, Salazar-Allen & Upreti, *Lichenologist* 48(6): 655 (2016)

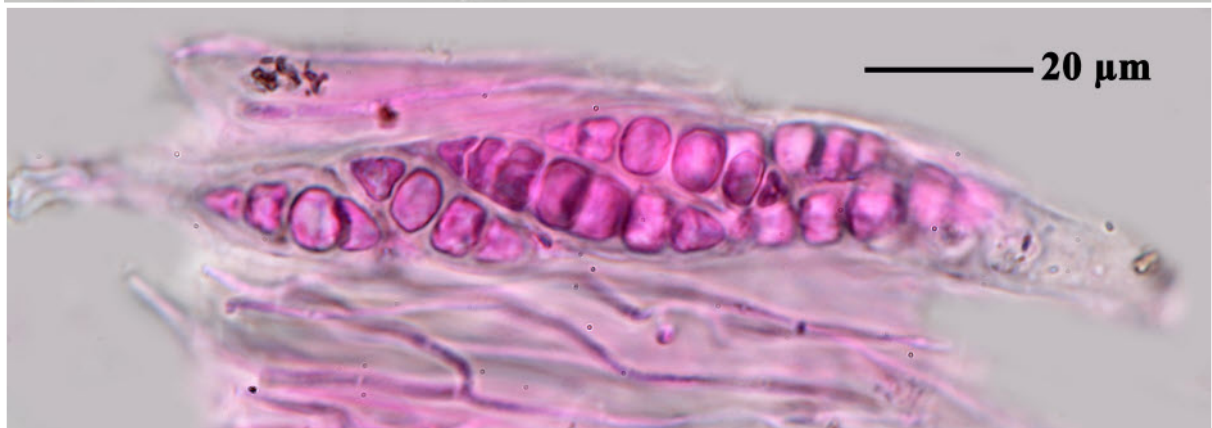
Thallus crustose, corticolous, continuous, smooth to uneven, light olive. Perithecia solitary, sessile with constricted base, with apical ostiole, lacking thalline cover, appanately subglobose, dark reddish brown. 0.4-0.5 mm wide, grey-brown spot often separated by a thin slit. Excipulum in section 30-50 μm thick, carbonized, laterally covered by amorphous, orange-brown tissue and what appears to be a carbonized cortex. Hamathecium composed of densely anastomosing, 0.5 μm thick, net-like paraphyses embedded in a gelatinous matrix, clear, IKI-; ostiolar channel clear. Ascospores 8/ascus, fusiform, 3-5 septate (eusepta only), 20-30 x 6-7 μm , hyaline, IKI-. Chemistry: Perithecial wall with a thinly dispersed, reddish brown pigment that bleeds first deep yellow, then deep orange to cinnabar red.

[Gueidan3055], Vietnam, Tuyen Quang prov., Na Hang natur reserve, on trees in the forest. Leg. C. Gueidan (no 3055), 26. 02.2011, det. A. Aptroot, 2013. (Duplicates ex BM000980112)





Bathelium porinosporum



Bathelium porinosporum