

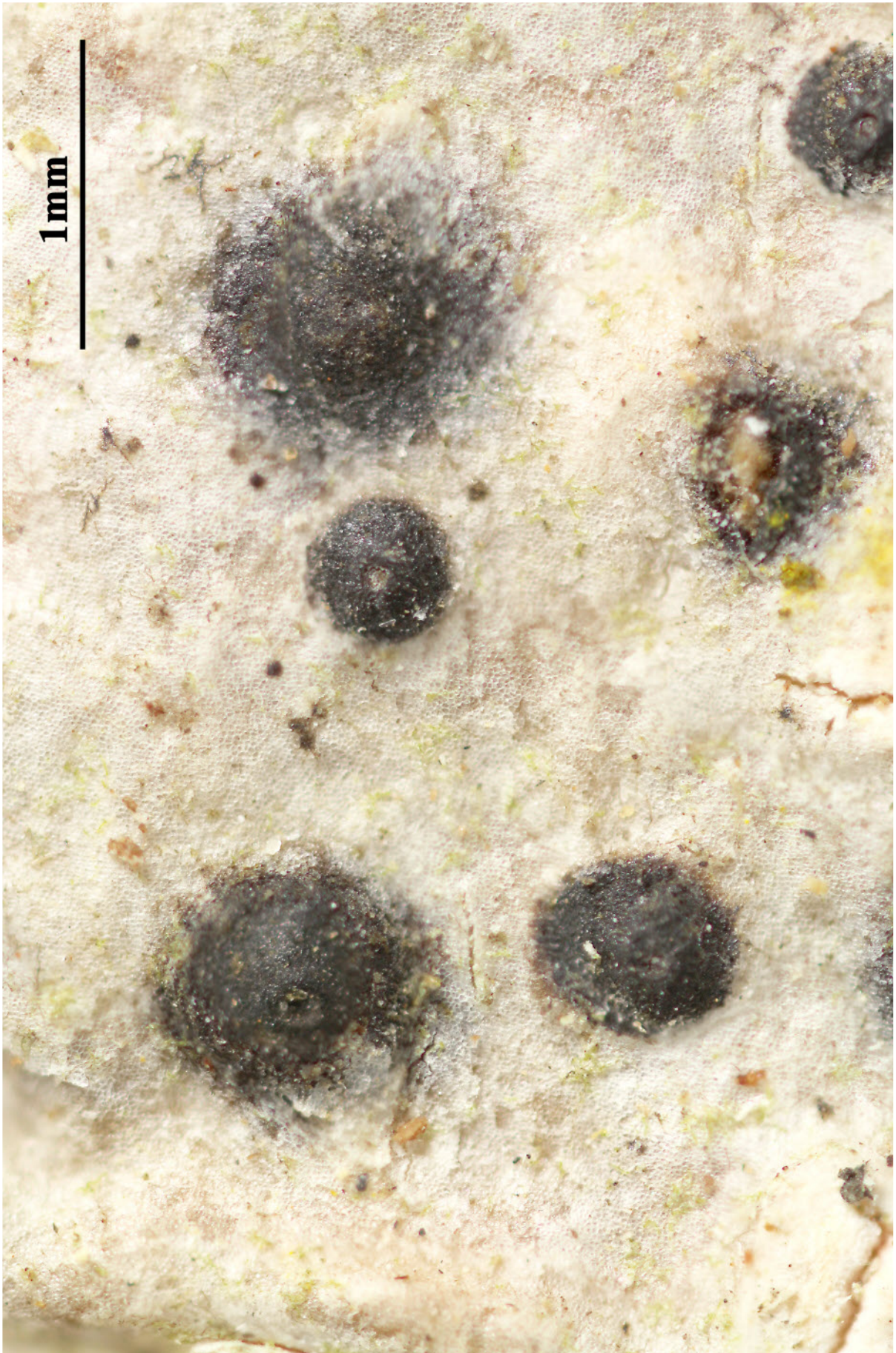
***Bogoriella conothelena*** (Nyl.) Aptroot & Lücking, *Lichenologist* 48(6): 909 (2016)  
= *Microthelia conothelena* (Nyl.) Zahlbr., *Cat. Lich. Univers.* 1: 258 (1921) [1922]  
= *Mycomicrothelia conothelena* (Nyl.) D. Hawksw., *Bull. Br. Mus. nat. Hist., Bot.* 14(2): 81 (1985)  
= *Verrucaria conothelena* Nyl., *Annls Sci. Nat., Bot., sér. 5 7*: 180 (1873)

Thallus pale brown, with dark prothallus lines. Ascomata with apical ostioles, solitary. c. 0.4 mm diam. and 0.20-0.25 mm high. Wall 30-50 (-70 below)  $\mu\text{m}$  thick. Ascospores 19-23(-27) x (7.5-)9.0-11.0(-12.0)  $\mu\text{m}$ , with larger upper locule, with rounded ends, verruculose, golden brown. Pycnidia absent. Chemistry: Thallus and ascomata UV-, K-. TLC: no substances detected.

[Weerakoon], Sri Lanka, Eastern Province, Ampara, leg. G. Weerakoon (s.n.), 2013, det. A. Aptroot, 2013.







*Bogoriella conothena*