

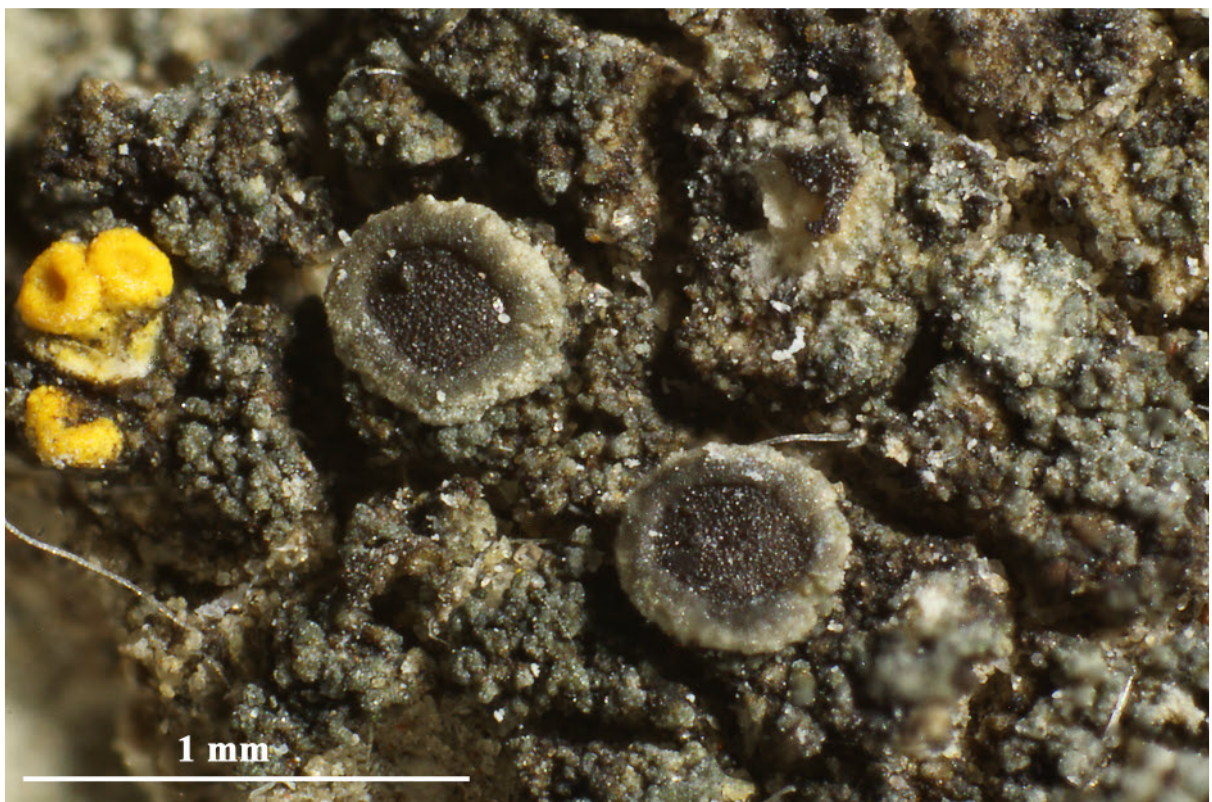
Caloplaca pratensis Wetm. ISOTYPUS

On stones.

Thallus areolate, light grey covered with dark blue-grey, 20-35 μm wide soredia. Apothecia sessile, to 0.5 mm diam., flat. Disc dark brown to black, epruinose; margin thin, grey, often lightly pruinose, with algae. Ascospores 8/ascus, polarilocular, 15.5-17.0 x 7.0-8.5 μm , isthmus less than 2 μm , often incomplete or poorly formed. Epithemium grey to light brown, 85-120 μm , K+ violet, N+ violet (Thalloidima Green). Lit. Bryologist 2009, 112(2): 382.

[19400], U.S.A. North Dakota, Oliver Co. The Nature Conservancy's Cross Ranche Preserve, Sangor Ghost Town, ca. 3.2 km S and 6.4 km E of Hensler. Gentle slopes of mixed grass prairie, Missouri River Valley, 515 m, 47°10'48" N, 100°59'42" W. Leg. M. K. Advaita (No. 6100), 5. June 2007, det. C. Wetmore. TELOSCHISTACEAE EXSICCATI No. 113 distributed by C. Wetmore.





Caloplaca pratensis



Caloplaca pratensis