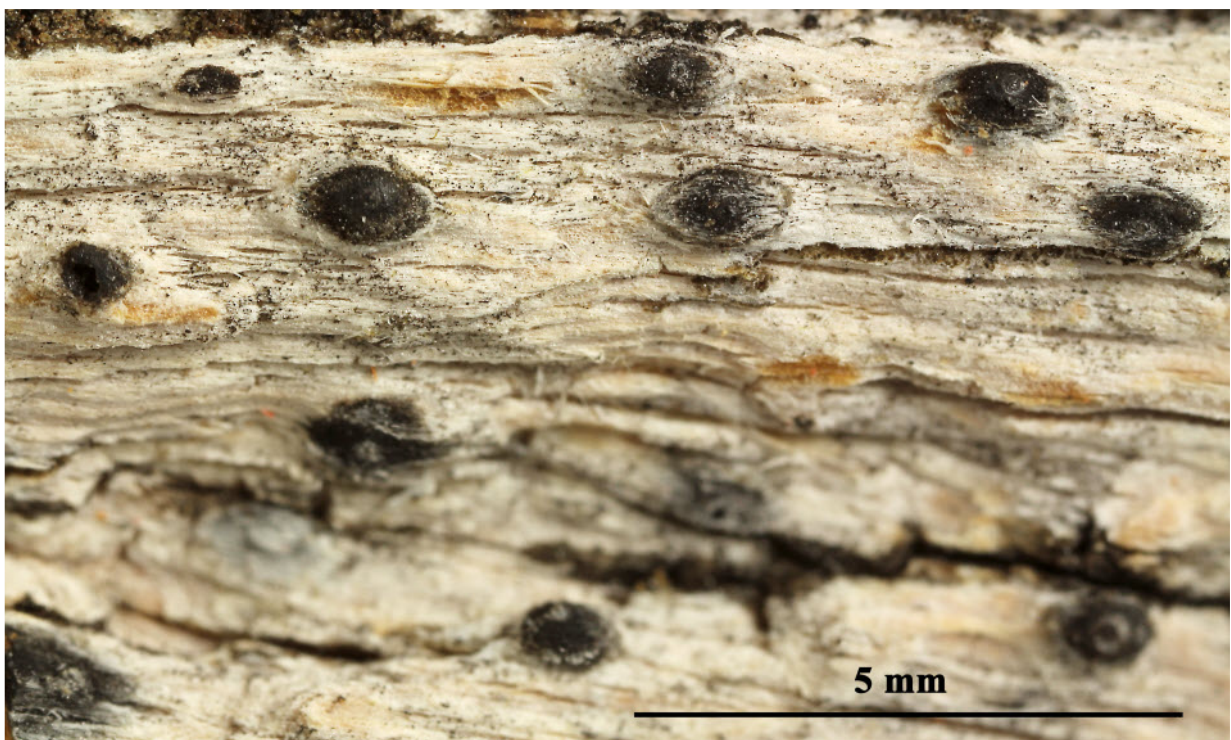


Constrictolumina chiquitana Flakus, Kukwa & Aptroot, Lichenologist 48(6): 681 (2016)

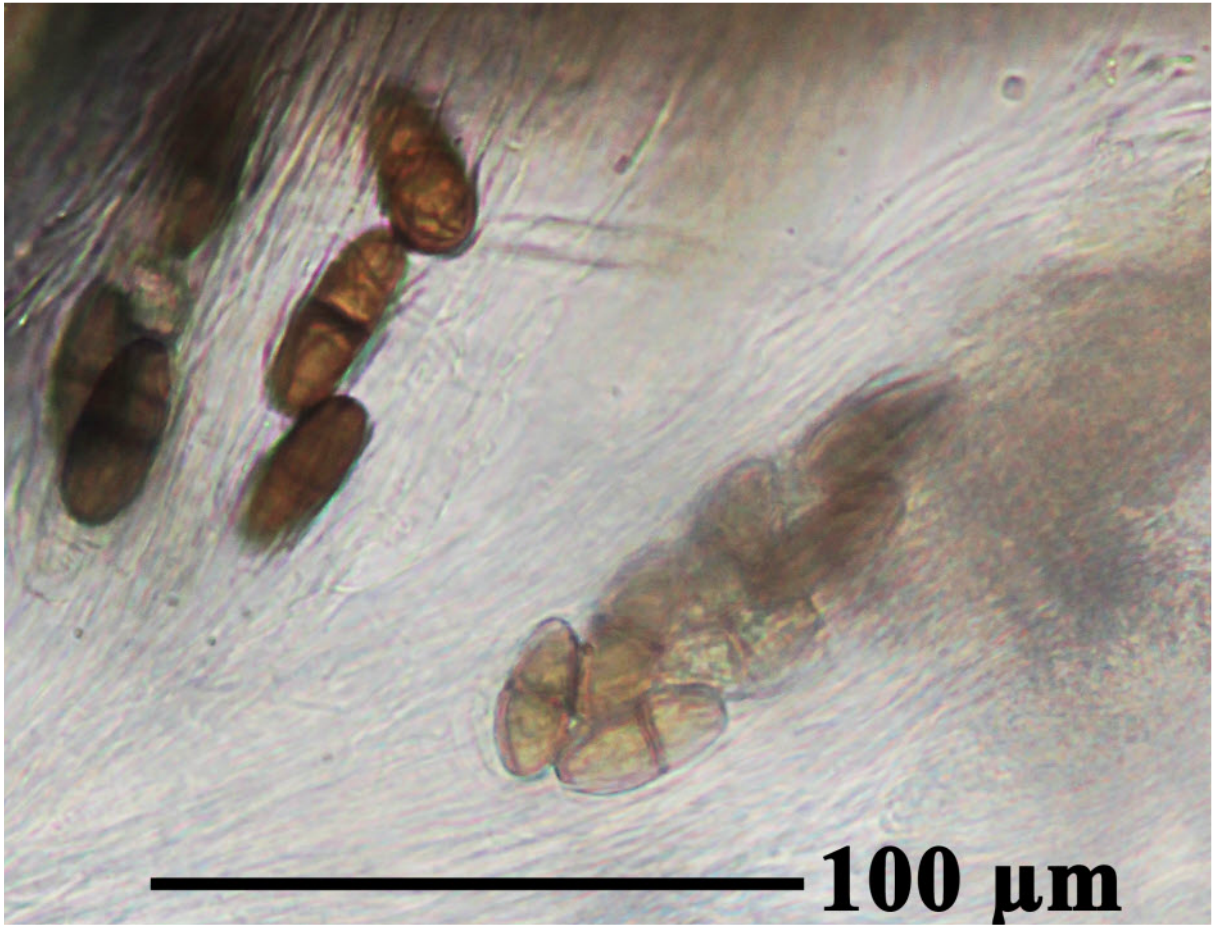
Thallus ecorticate, endophloeodal, smooth, continuous, greyish white, not surrounded by a black prothallus. Ascomata subglobose, 0.4-0.5 mm diam., single, ascomatal verrucae usually elongate in outline, almost flat to hemispherical emergent from the thallus to superficial with a surface different from the thallus, greyish black, covered by an extending clypeus 0.6-1.4 mm wide. Ostioles apical not fused. Hamathecium clear. Ascospores 8/ascus, brown, K+ grey, 1-septate, lumina pseudomuriform, 26-48 x 12-17 μm . Chemistry: Thallus surface, medulla and Ascomata K-, UV-. TLC: no secondary substances detected.

[kukwa10621], Bolivia, Dept. Santa Cruz, Prov. Cordillera, Parque Nacional y Área Natural de Manejo Integrado Kaa-Iya del Gran Chaco, near Peto Blanco (park guard's station, 18°56'26" S, 60°22'39" W, 340 m. Chiquitano forest. Leg. M. Kukwa (no 10621), 5.12.2011, det. A. Aptroot. ISOTYPE





Constrictolumina chiquitana



Constrictolumina chiquitana