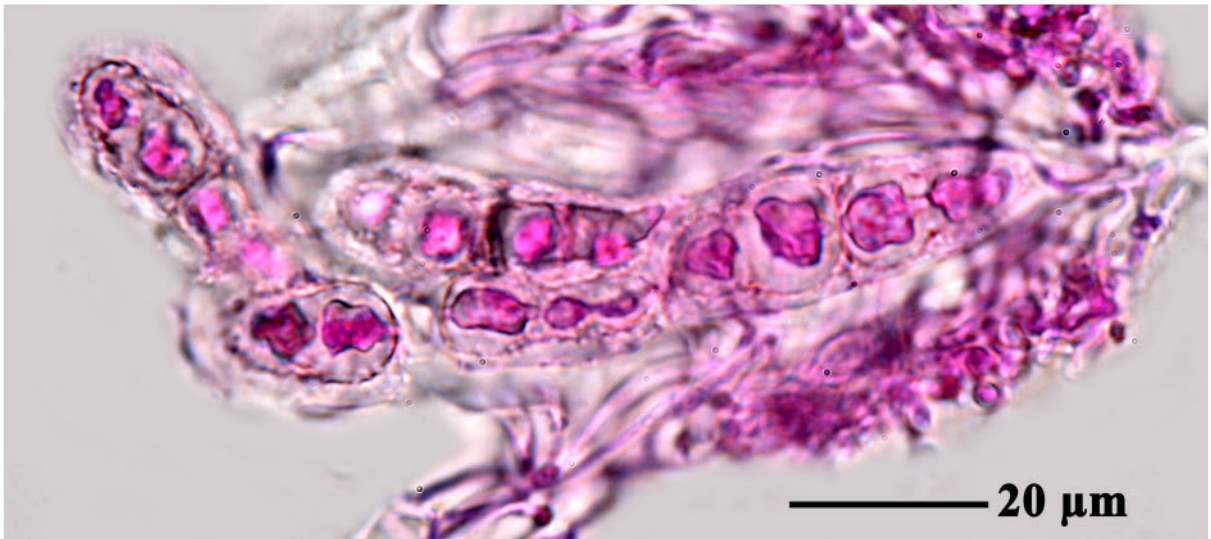
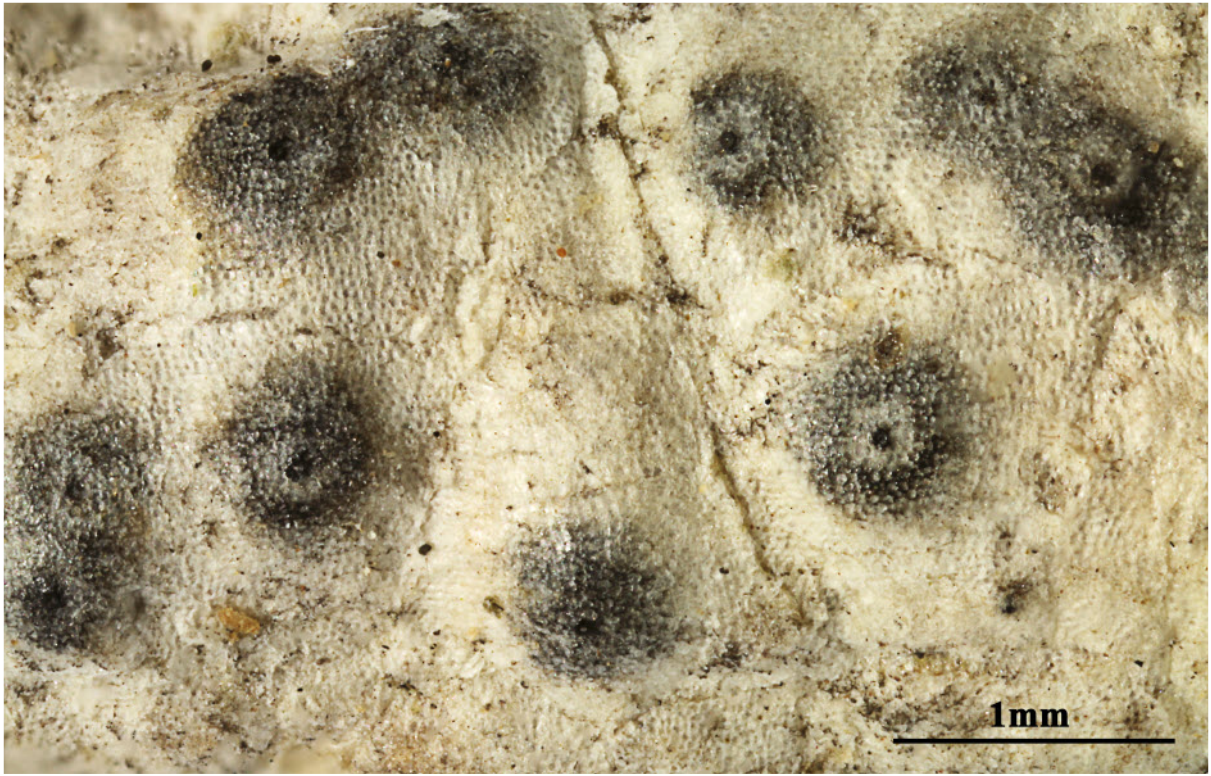


Constrictolumina majuscula (Nyl.) Lücking, M.P. Nelsen & Aptroot,
in Aptroot & Lücking, *Lichenologist* 48(6): 921 (2016)
= *Arthopyrenia majuscula* (Nyl.) Zahlbr., *Cat. Lich. Univers.* 1: 332 (1922)
= *Ciferriolichen majusculus* (Nyl.) R.C. Harris, *Moscossa* 6: 215 (1990)
= *Verrucaria majuscula* Nyl., *Annls Sci. Nat., Bot., sér. 4* 20: 253 (1863)

Thallus thin, whitish. Ascomata with apical ostioles, solitary, 0.4-0.9 mm diam., erumpent; Hymenium flattened hemispherical. Ostioles surrounded by a broad, thin hyphal ring. Wall thin, lacking below. Asci narrowly obovate, (80-)105-125 x 25-30 μm . Ascospores 4-8/ascus, irregularly arranged, 1-septate, each cell partially subdivided by a flat-topped ring-like thickening of the wall, becoming 3-septate; wall strongly granular ornamented, perispore thick, up to 2 μm , 27-37 x 10-12 μm . Chemistry: Thallus and ascomata UV-, K-. TLC no substances detected.

[ABL107336], Chagos Expedition, S. Brother, Indian Ocean, on *Serevola*. Leg. M.R.D. Seaward, 13.3.1996.





Constrictolumina majuscula