

Dictyomeridium campylothelioides (Aptroot & Sipman) Aptroot, Nelsen & Lücking comb. nov.

Mycobank No.: Mbxxxx

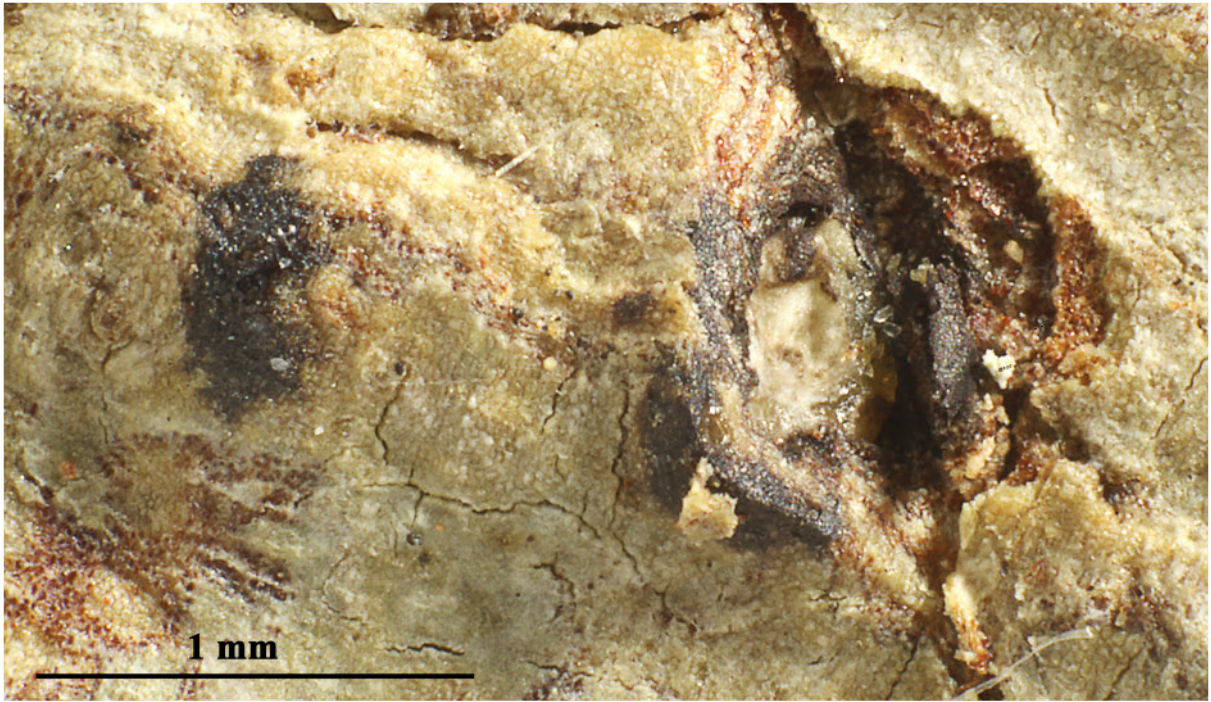
Polymeridium campylothelioides Aptroot & Sipman, in Aptroot, Diedrich, Sérusiaux & Sipman, *Biblioth. Lichenol.* **57**: 37 (1995); type: Papua New Guinea, Madang Prov., Laing Island in Hansa Bay near Bogia, *Sipman* 34767 (B—holotype).

Thallus ecorticate, white, UV–. *Ascomata* solitary or 2 aggregated with common ostiole. *Ostioles* lateral. *Hamathecium* not inspersed, filaments profusely anastomosing. *Ascospores* 8/ascus, IKI–, muriform, $55\text{--}80 \times 17\text{--}25 \mu\text{m}$, with partly oblique septa, not ornamented, wall not thickened. *Chemistry*. no substances.

Distribution. Asian (Taiwan, Papua New Guinea). Incorrectly reported from Venezuela (Komposch & Hafellner 2006). *New country record*. **Indonesia**: *Java*: Bay of Tapen, S. of Wlingi, *Groenhart* 5796, 1939 (ABL, L).

[Groenhart5796], Indonesia, East Java, Bay of Tapen, S. of Wlingi. Leg. P. Groenhart, 14.5.1939, det. A. Aptroot.





Dictyomeridium campy-