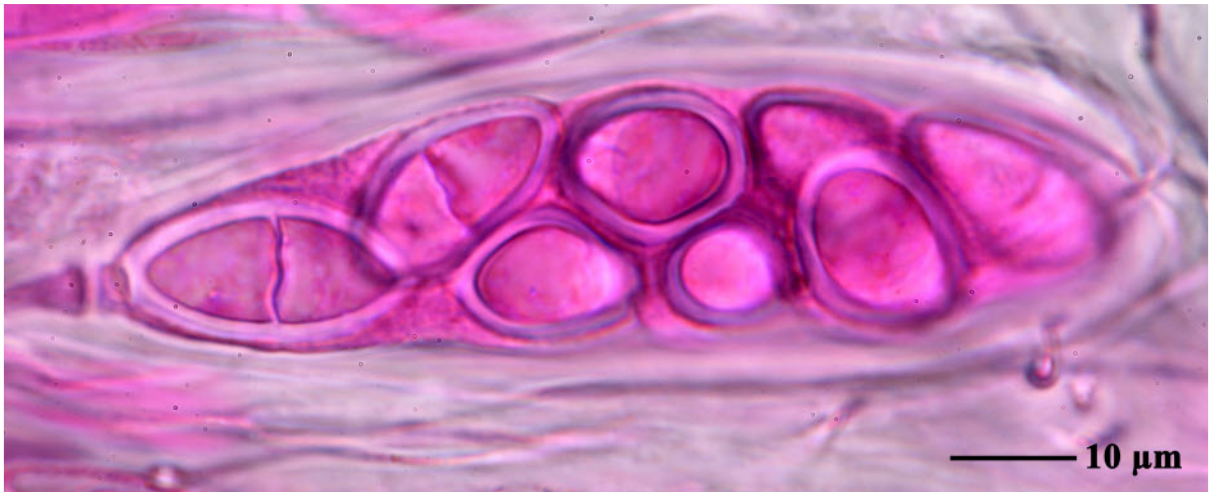


*Dictyomeridium lueckingii* Flakus & Aptroot, in Flakus, Kukwa & Aptroot, Lichenologist 48(6): 681 (2016)

Thallus ecorticate, smooth, cracked, matt, somewhat white pruinose, continuous, c. 0.2 mm thick, white, not surrounded by a black prothallus. Ascomata pyriform, 0.2-0.4 mm diam., single, half immersed, with a surface different from the thallus, ascomatal verrucae distinctly raised above the thallus. Wall fully carbonized, not differentiated into excipulum and involucrellum,  $\leq 80 \mu\text{m}$  wide. Ostioles excentric, not fused, beaked, black, surrounded by a greyish spot. Hamathecium clear. Ascospores 8/ascus, hyaline, I+ violet, submuriform, with 5-6 transverse and 1-2 longitudinal septa, 8-13 celled, broadly ellipsoid,  $25\text{-}35 \times 12\text{-}17 \mu\text{m}$ , ends rounded, lumina rounded, surrounded by a gelatinous layer  $\leq 4 \mu\text{m}$  thick. Chemistry: Thallus and ascomata surface UV+ yellow, medulla K-. TLC: lichexanthone (major) detected.

[Flakus24211], Bolivia, Tarija, Burnet O'Connor, 24 km from Entre Rios, near Soledad, Tucumano-Boliviano montano forest.  $21^{\circ}39'45''$  S,  $63^{\circ}07'29''$  W, 1700 m. Leg. A. Flakus (no 24211), 11.08.2012, det. A. Aptroot. ISOTYPE





*Dictyomeridium lueckingii*





*Dictyomeridium lueckingii*