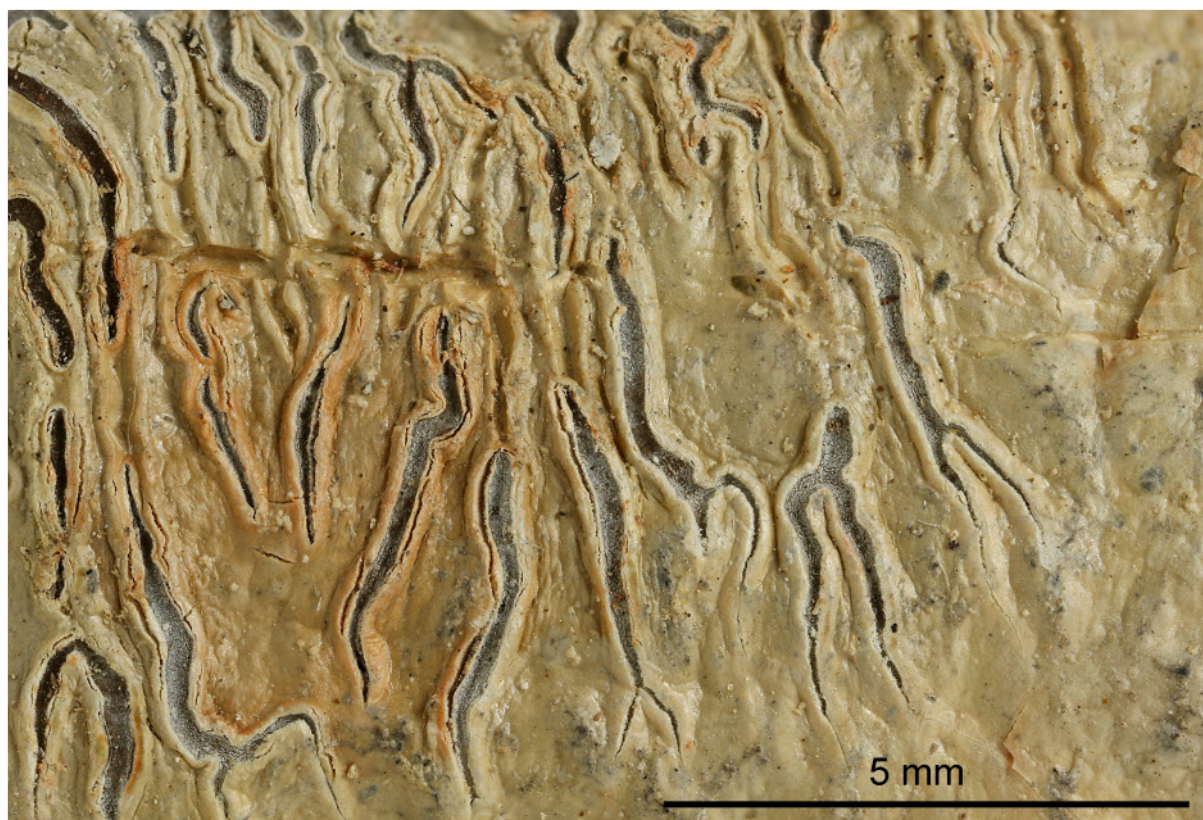


Diorygma erythrellum (Mont. & Bosch) Kalb, Staiger & Elix
[= *Graphina erythrellum* (Mont. & Bosch) Zahlbr.]

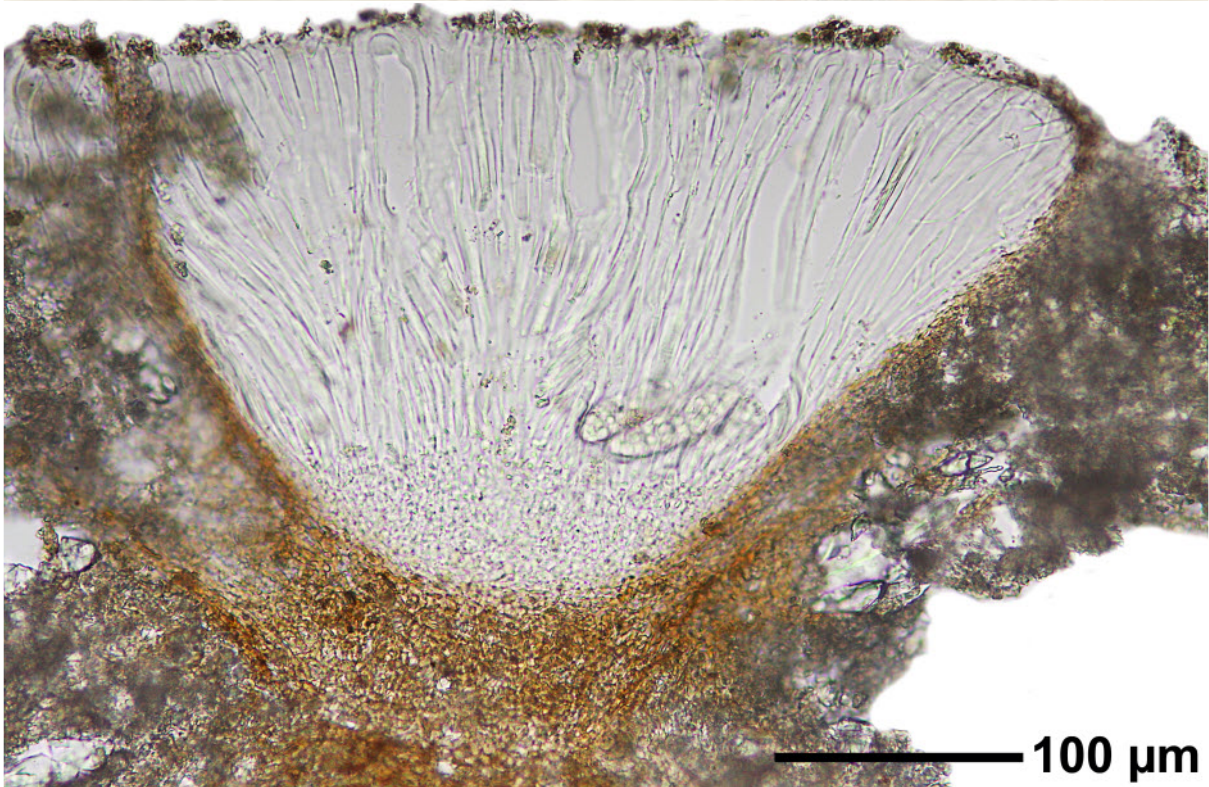
Thallus grey to pale brownish, uneven or with small warts, surface matt or glossy, not powdery, 50-100 μm thick. Lirellae 0.7-7 x 0.3-0.5 mm, young slit-like, later open and elevated. Disk reddish to brown, thinly white pruinose. Excipulum more or less divergent, not carbonized, yellowish to pale brown. Hymenium not interspersed, 120-150 μm high. Epithecium appr. 5 μm , brown. Paraphyses with thin lumina and thick gelatinous cover, rarely anastomosing, tips of paraphyses nearly not branched, ending in gelatinous cover. Ascospores 8/ascus, hyaline, muriform, 35-57 x 9-18 μm , J \pm violet. Chemistry: medulla K yellow>orange-red, P+ yellow; norstictic acid (major), connorstictic acid (minor). Note: similar to *Platythecium dimorphodes* and *P. colliculosum*, but ascospores larger and paraphyses with thin lumina and thick gelatinous cover.

[6425], Philippinen, Mindanao, Prov. Misamis Oriental, südwestl. Gingoog City, Barangay Lunutan N 08°42.510, E 125°01.241, 1120 m und am Weg zum Mt. Lumot (Via Haruhay Trail) bis zum Zwischencamp im trop. Bergregenwald 08°40.713' N, 125°01.649' E, 1680 m. Leg. Schumm 24.08.1999, det. Schumm, test. Archer and Staiger. Specimen mentioned in Kalb, Staiger & Elix (2004).

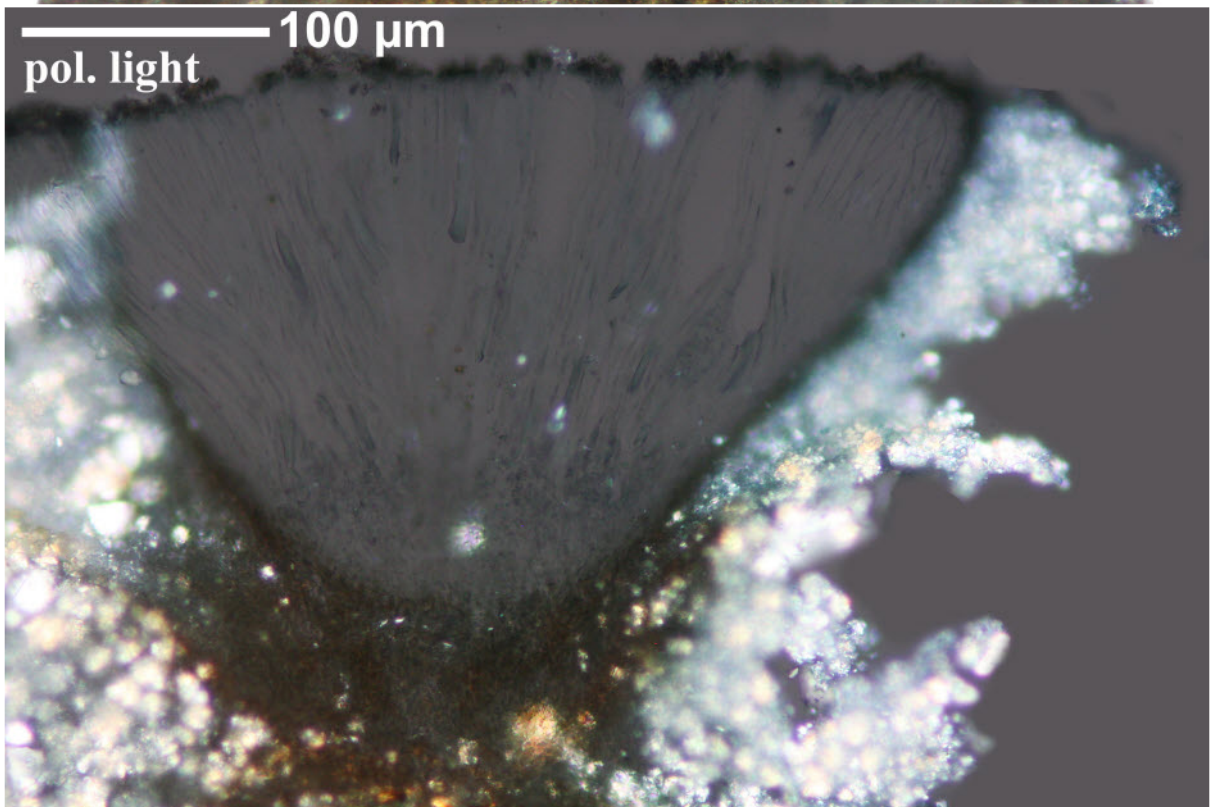
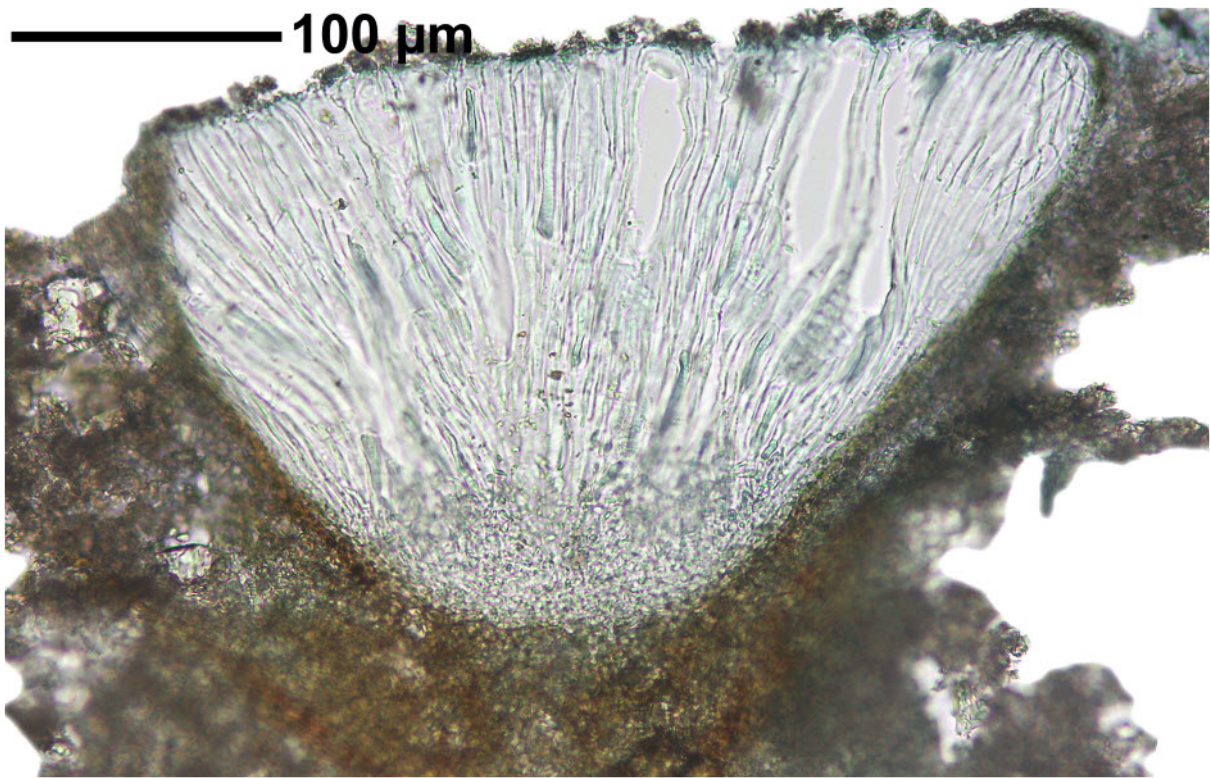




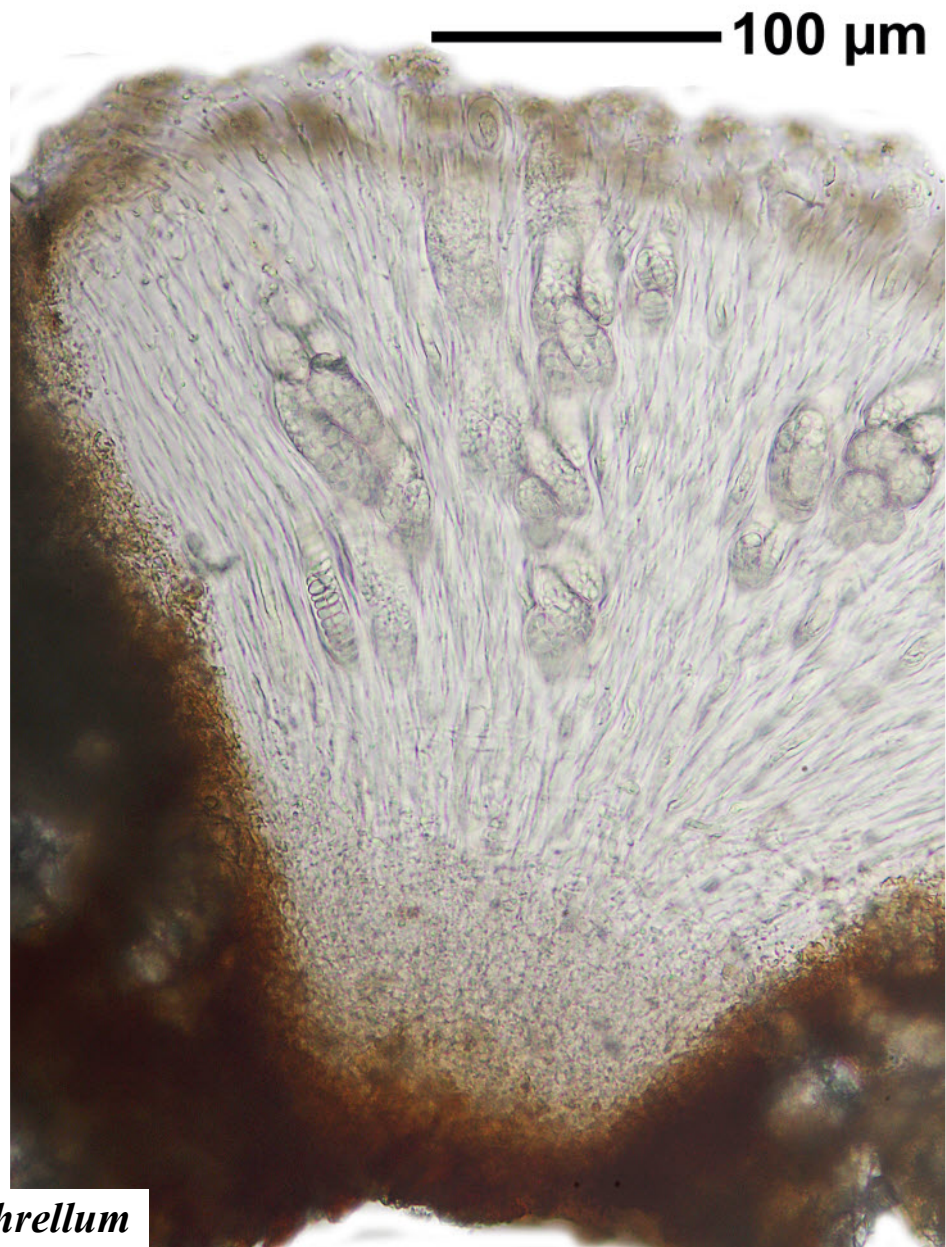
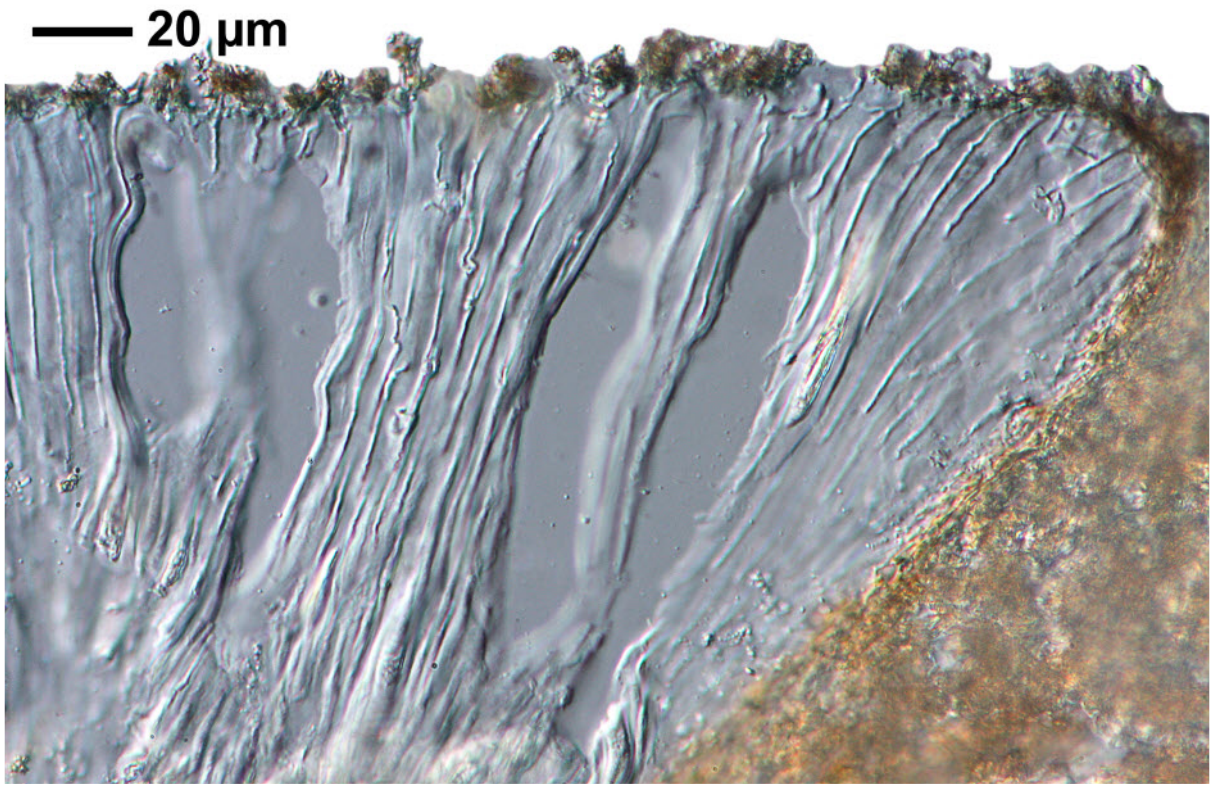
Diorygma erythrellum



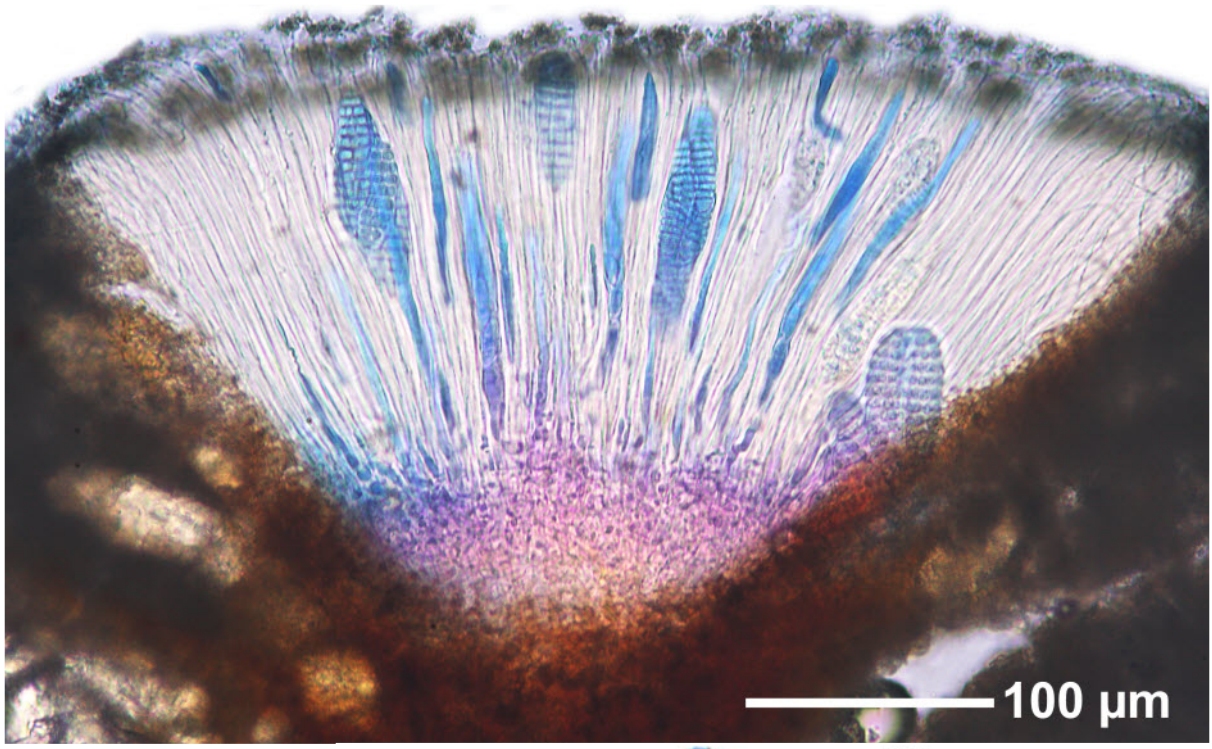
Diorygma erythrellum



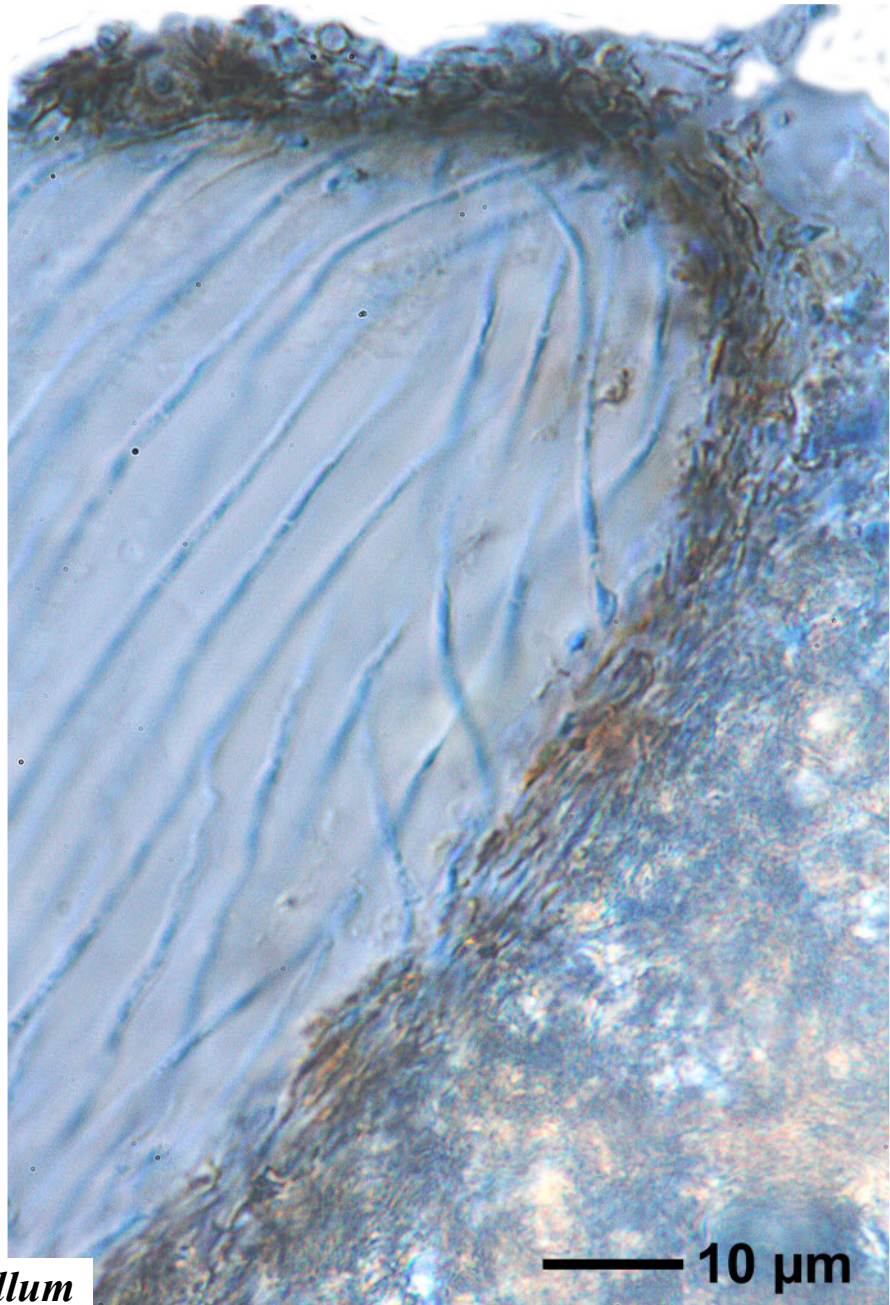
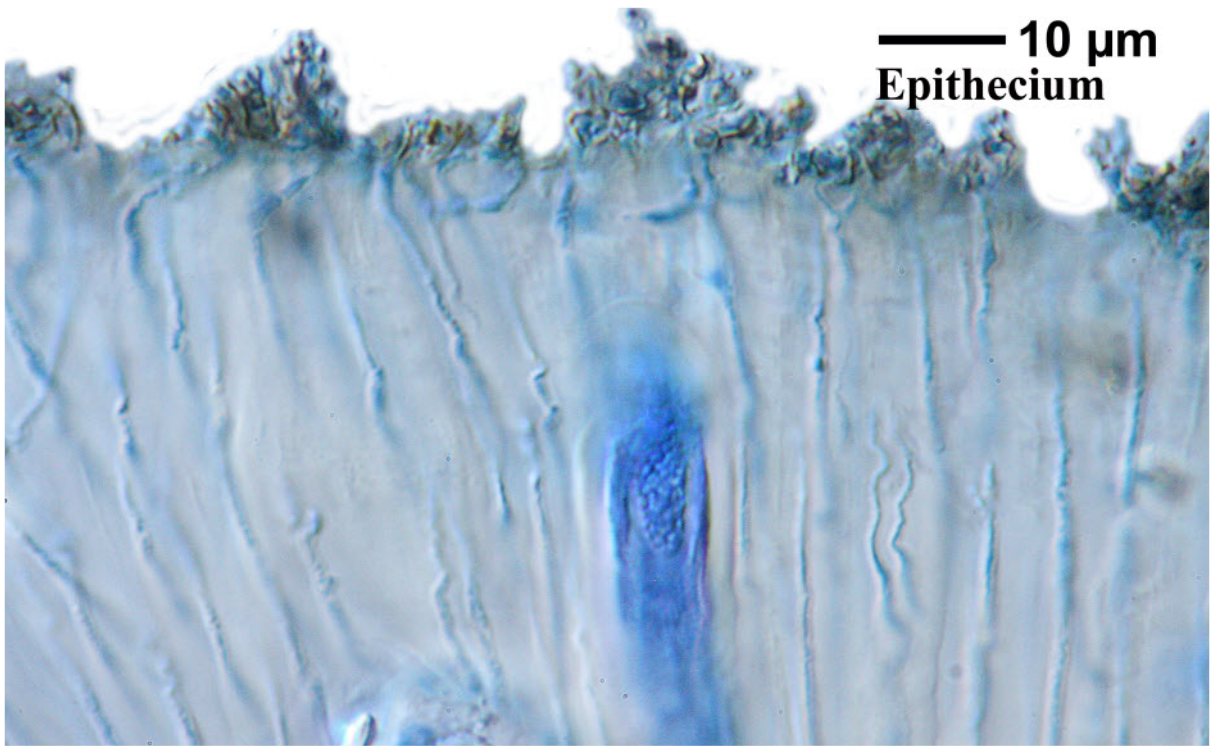
Diorygma erythrellum



Diorygma erythrellum



Diorygma erythrellum



Diorygma erythrellum

