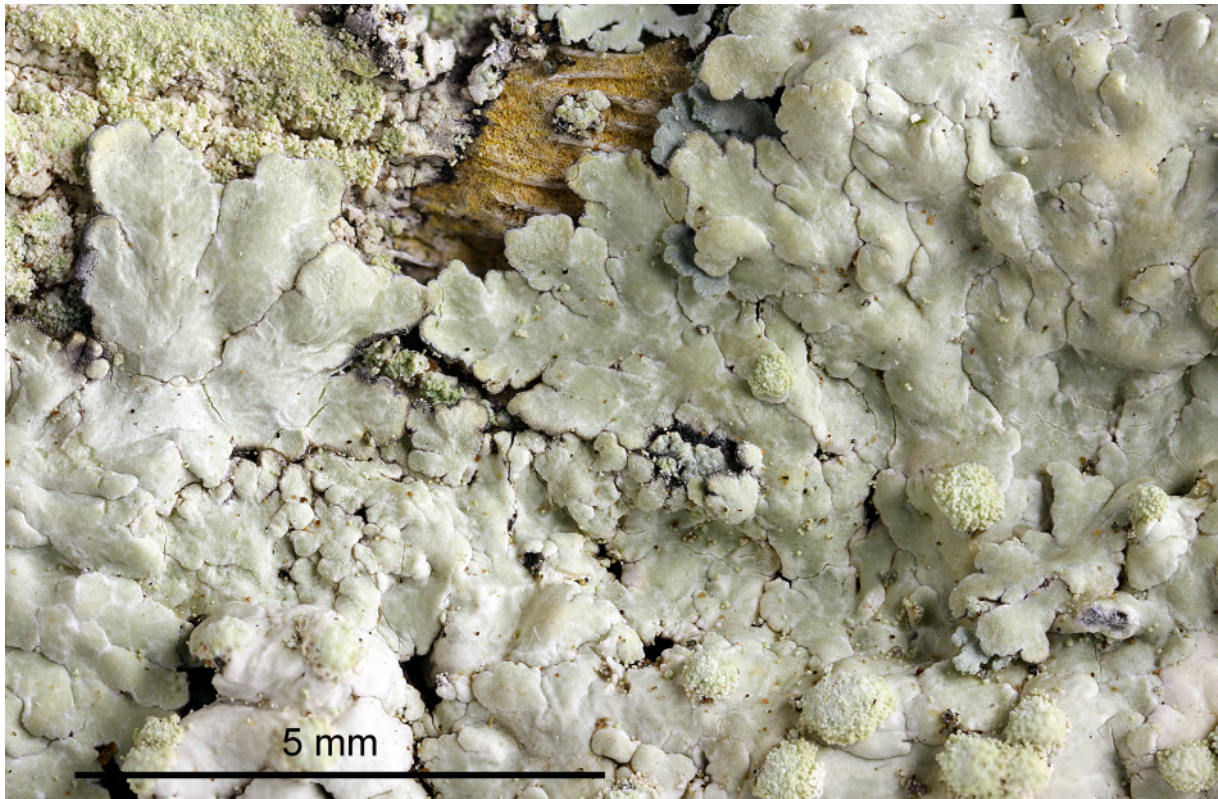


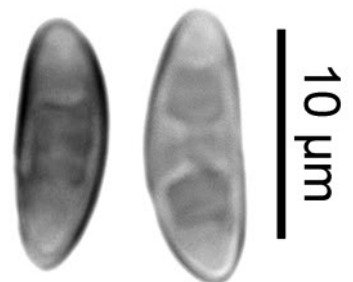
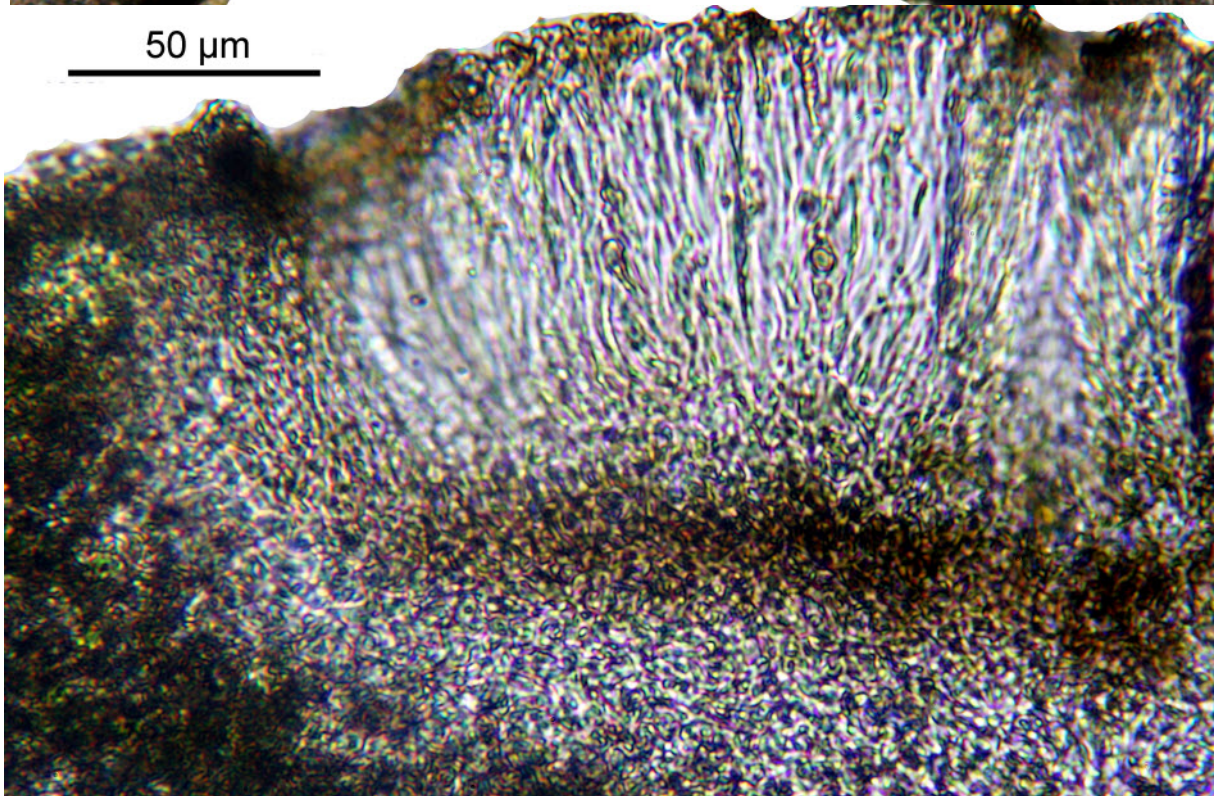
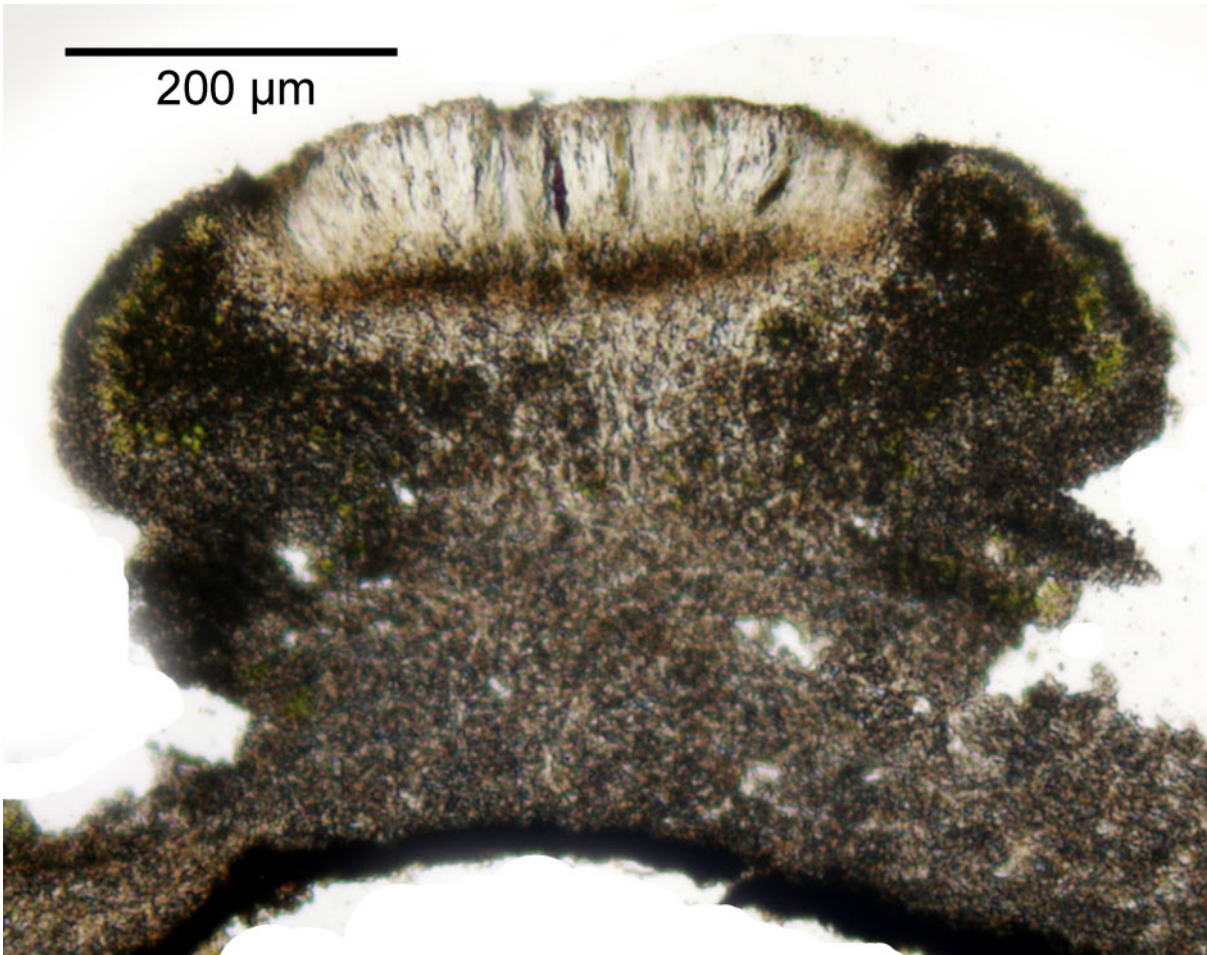
*Dirinaria applanata* (Fée) D.D.Awasthi

Thallus with globose soralia. Lobes confluent. Cortex K+ yellow. Medulla K+ yellow, C-, KC-, P-, UV+white; atranorin, divaricatic acid, 4 terpenoids. Pantropical.

[14439], Seychelles, Praslin, Anse Lazio, beim Hotel Bonbon Plume, 4°17.611' S, 55°42.131' E, ca. 2 m. Leg. Schumm & Frahm 29.09.2008, det. F. Schumm, conf. A. Aptroot 2008.







*Dirinaria applanata*