

Dirinaria leopoldii (Stein) D.D.Awasthi

Thallus closely appressed to the substratum, grey, finely pruinose, lobes 1-1.3 mm wide. Soralia capitate, globose, 0.5-0.7 mm diam., soredia farinose, ± reddish-purple tinged. Medulla colourless or coccineous in part. Hypothecium dark brown. Spores 8/ascus, brown, 14-18 x 6-8 µm. Chemistry: cortex K⁺ yellow, C-, P-; medulla K- or pigmented regions K⁺ purple; atranorin, sekikaic acid, several triterpenes.

[18027], Brasilien/ Bahia. Zwischen Feira de Santana und Milagres, etwa 10 km vor Milagres, in einer lichten Castinga an dünnen Ästen. 200 m. Leg. K. Kalb & M. Marcelli 21.07.1980, det. K. Kalb. Chemie: Atranorin, Sekikasäure, Pigment (3, 1, 3 gelb), anal. by K.Kalb (170/2210). KALB, LICHENES NEOTROPICI NR. 62.

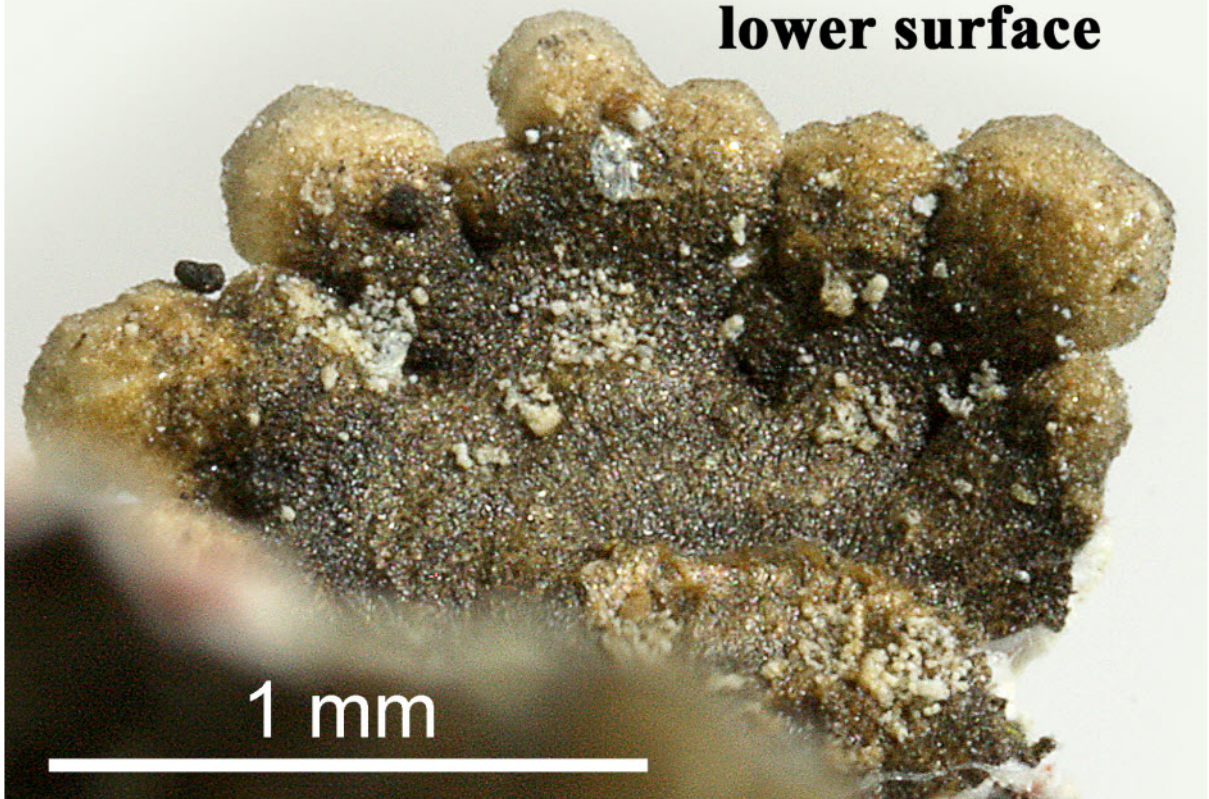




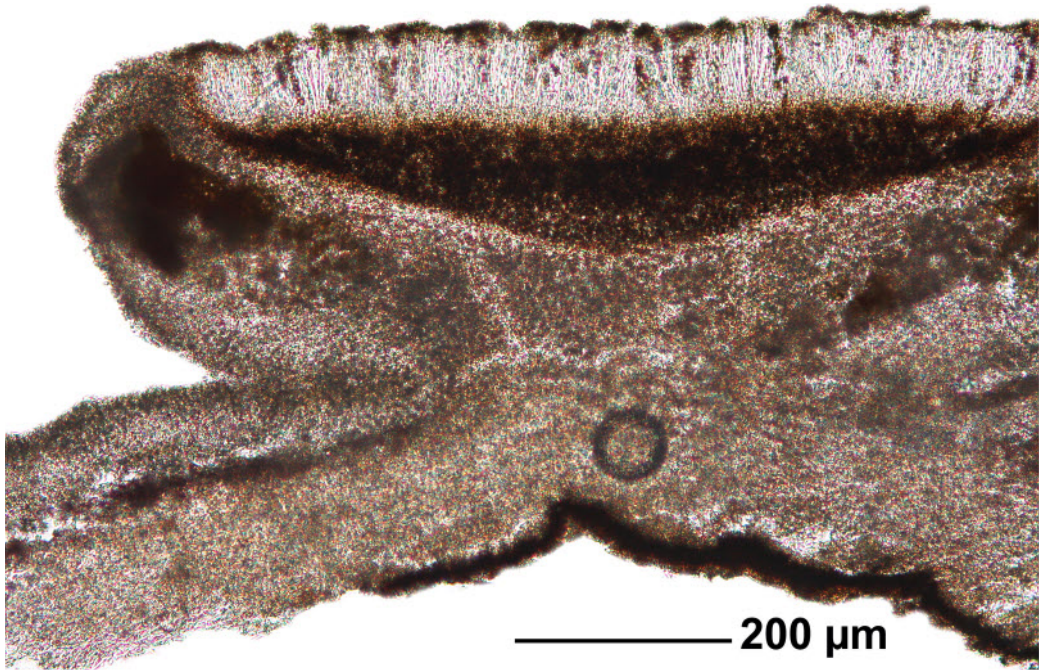
Dirinaria leopoldii



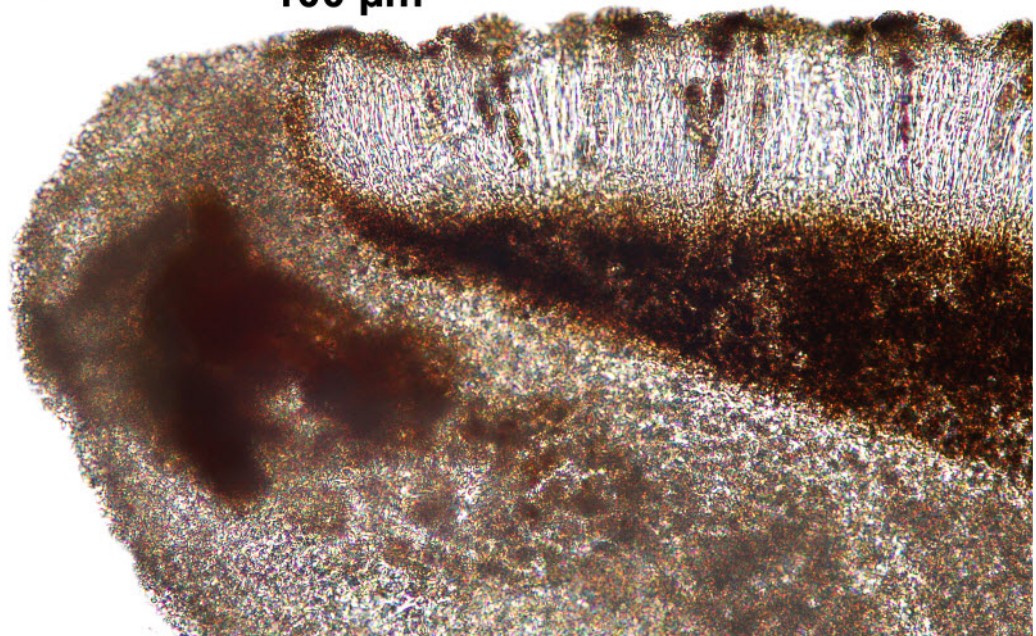
lower surface



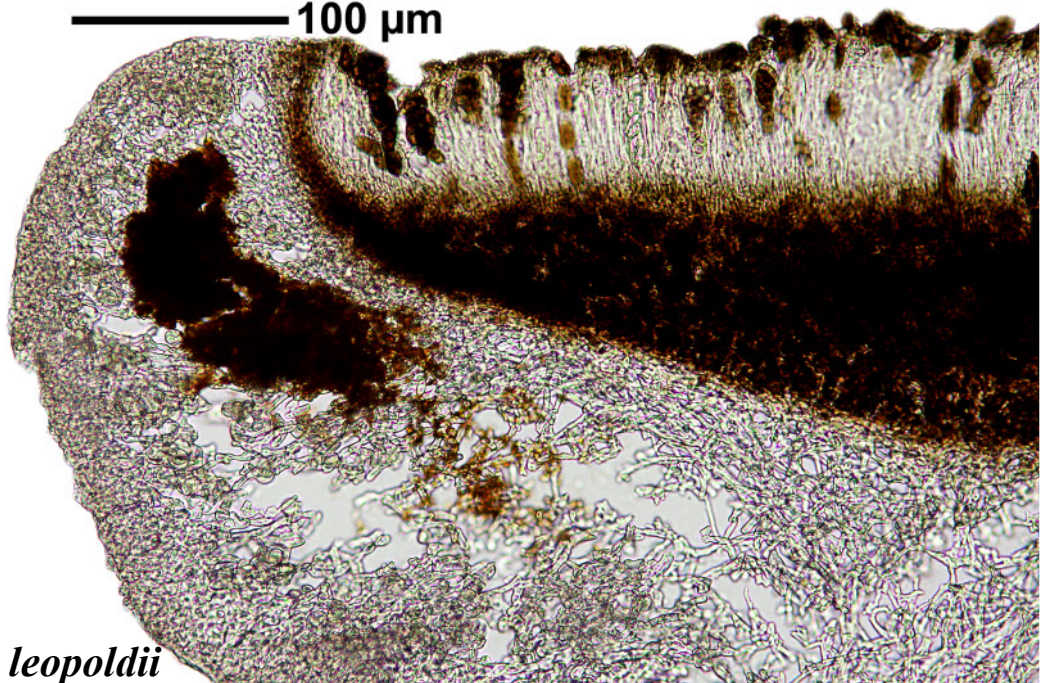
Dirinaria leopoldii



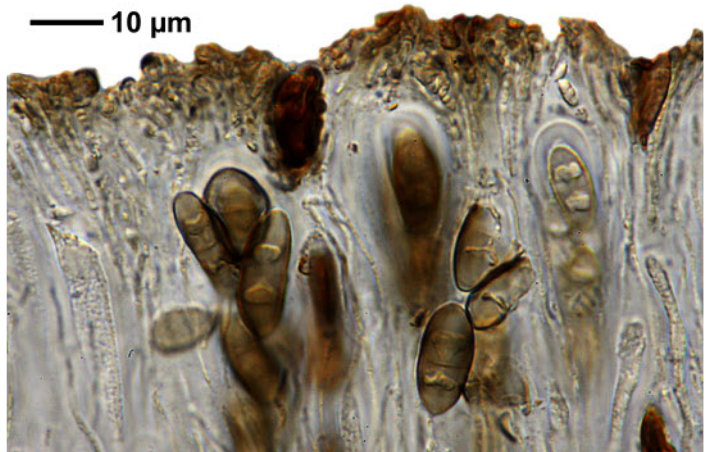
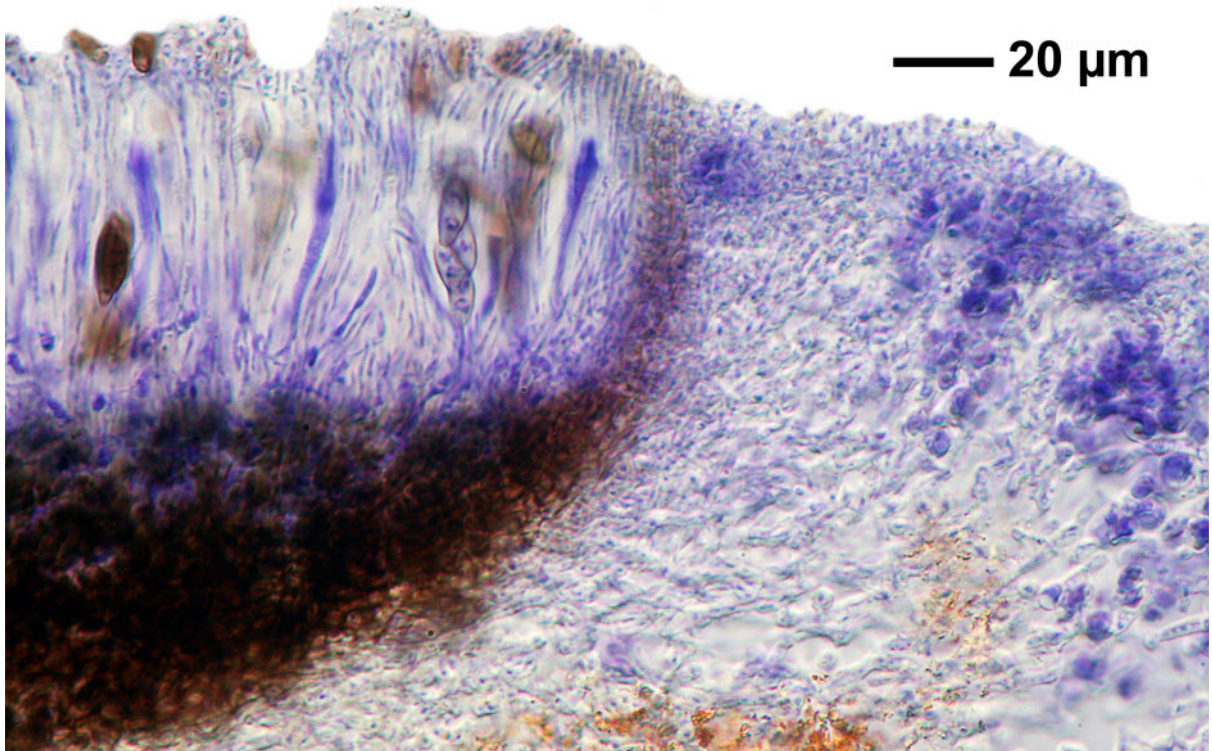
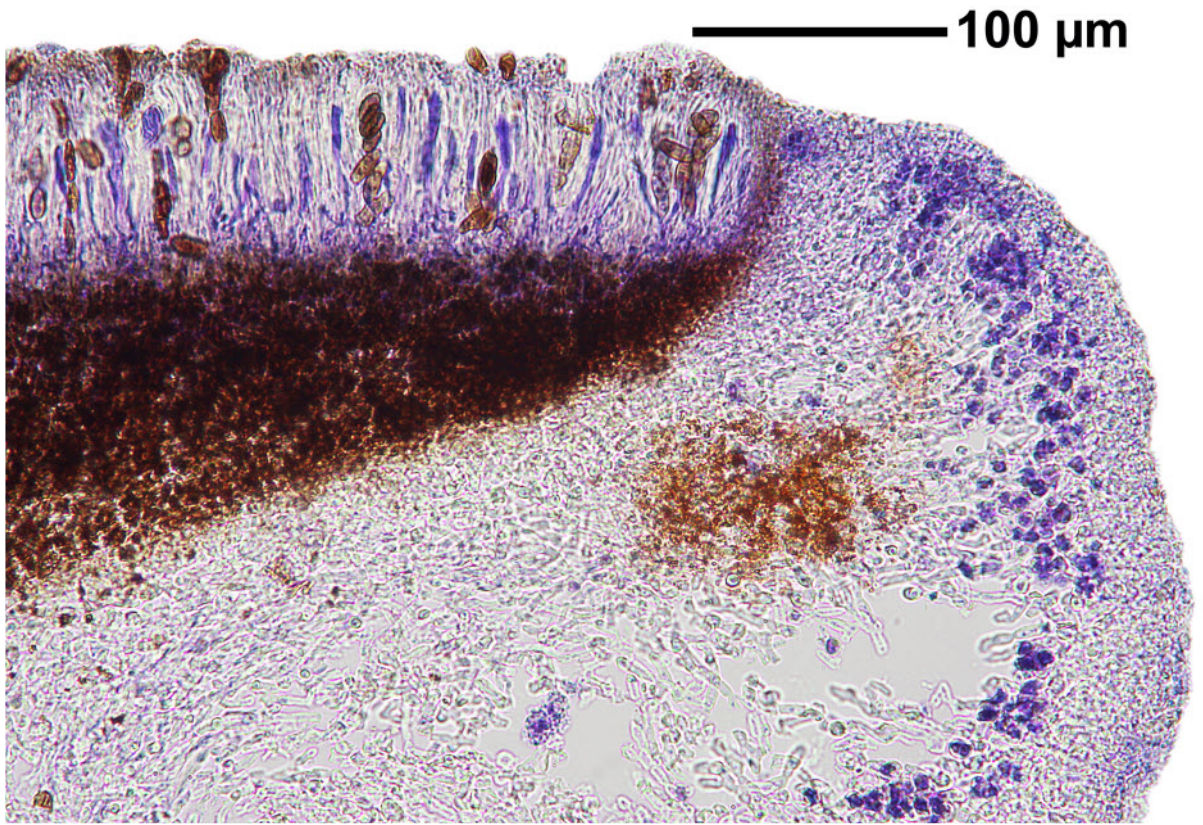
100 µm



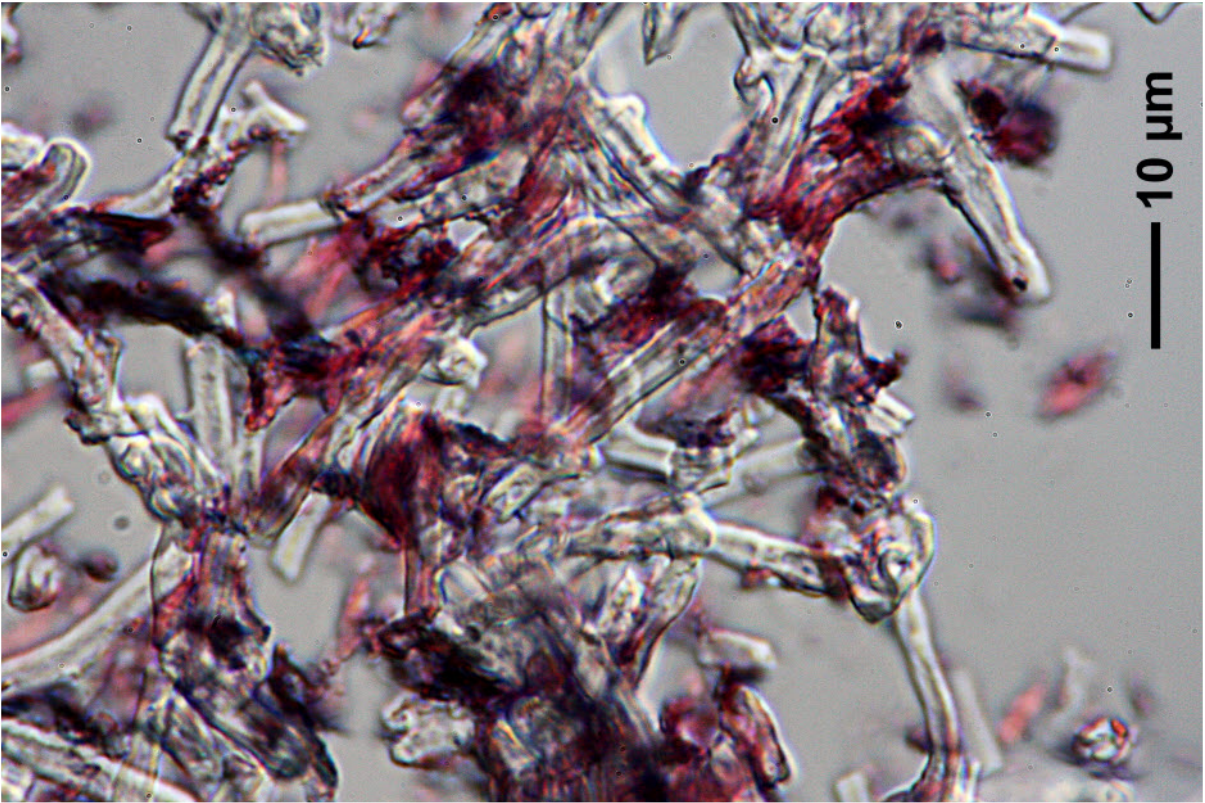
100 µm



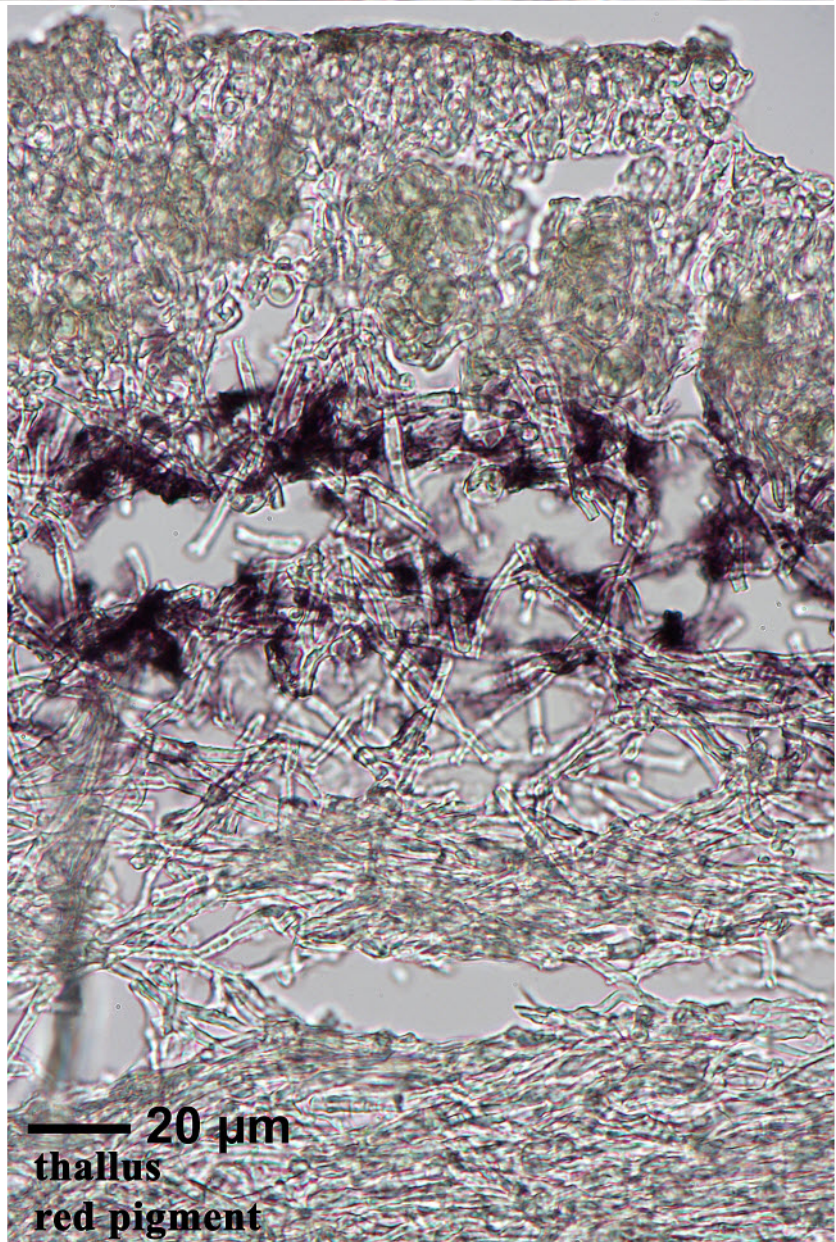
Dirinaria leopoldii



Dirinaria leopoldii

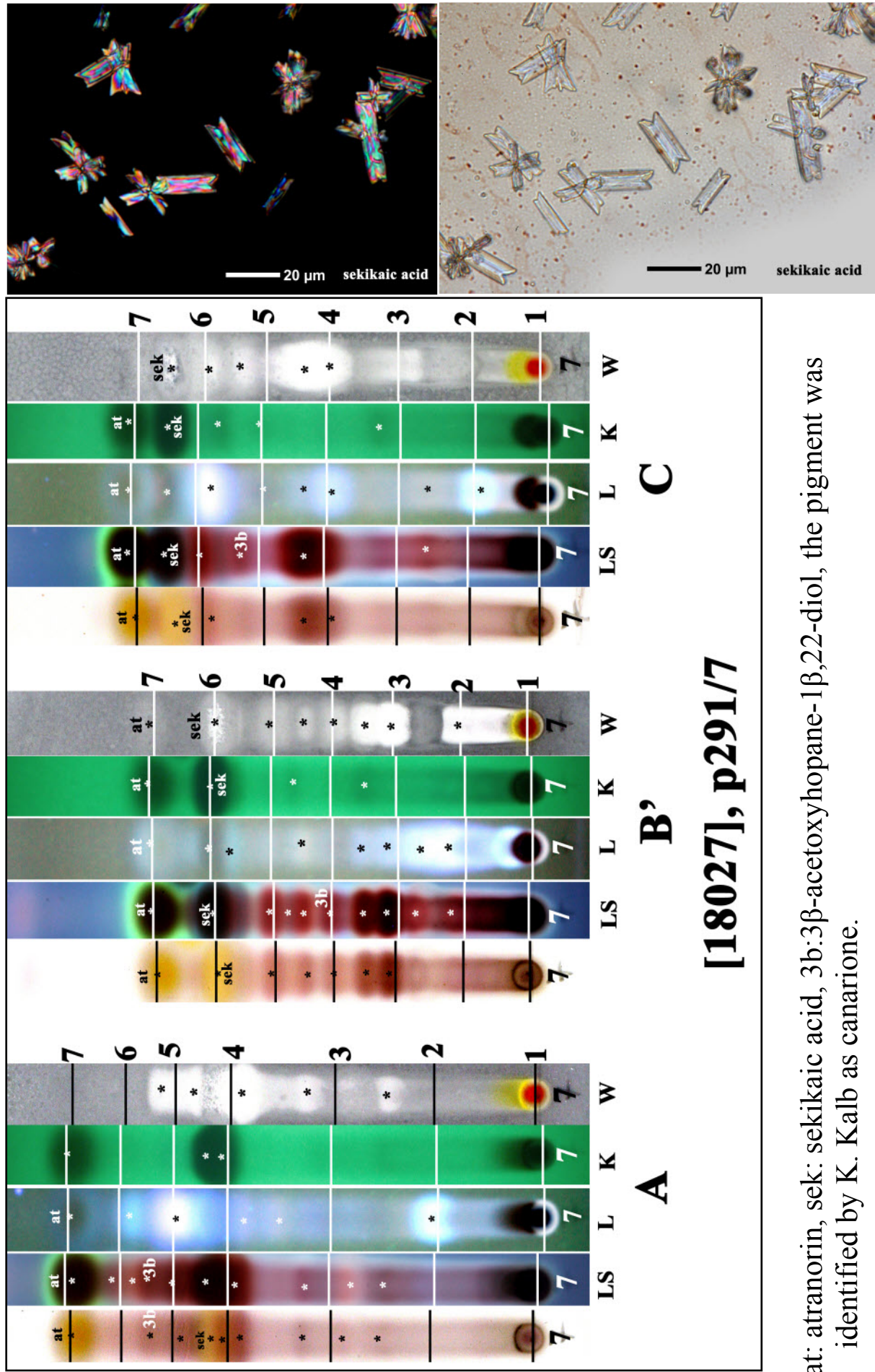


— 10 μm



— 20 μm
thallus
red pigment

Dirinaria leopoldii



at: atranorin, sek: sekikaic acid, 3b:3β-acetoxyhopane-1β,22-diol, the pigment was identified by K. Kalb as canarione.