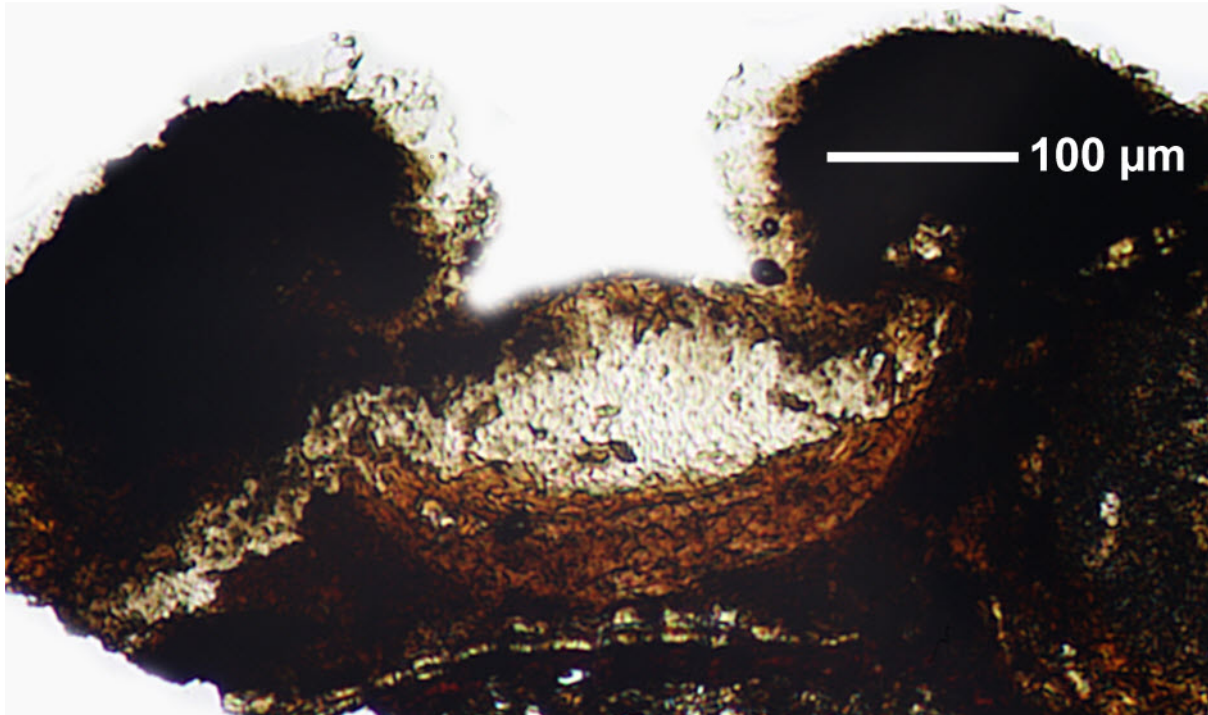


*Dyplolabia afzelii* (Ach.) A.Massal.

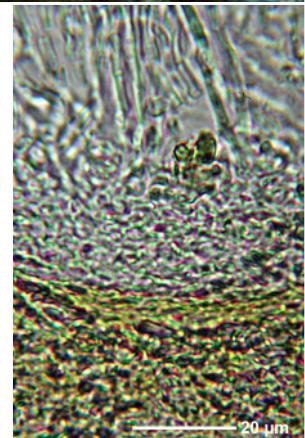
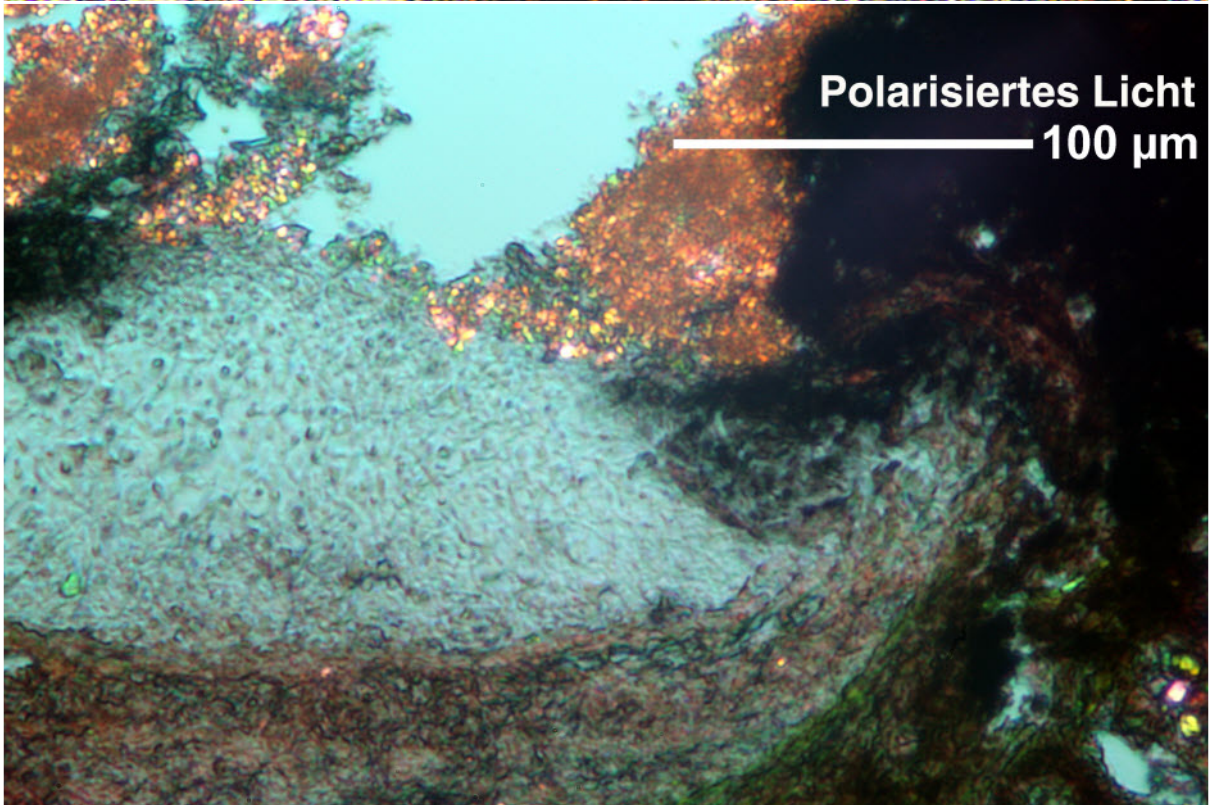
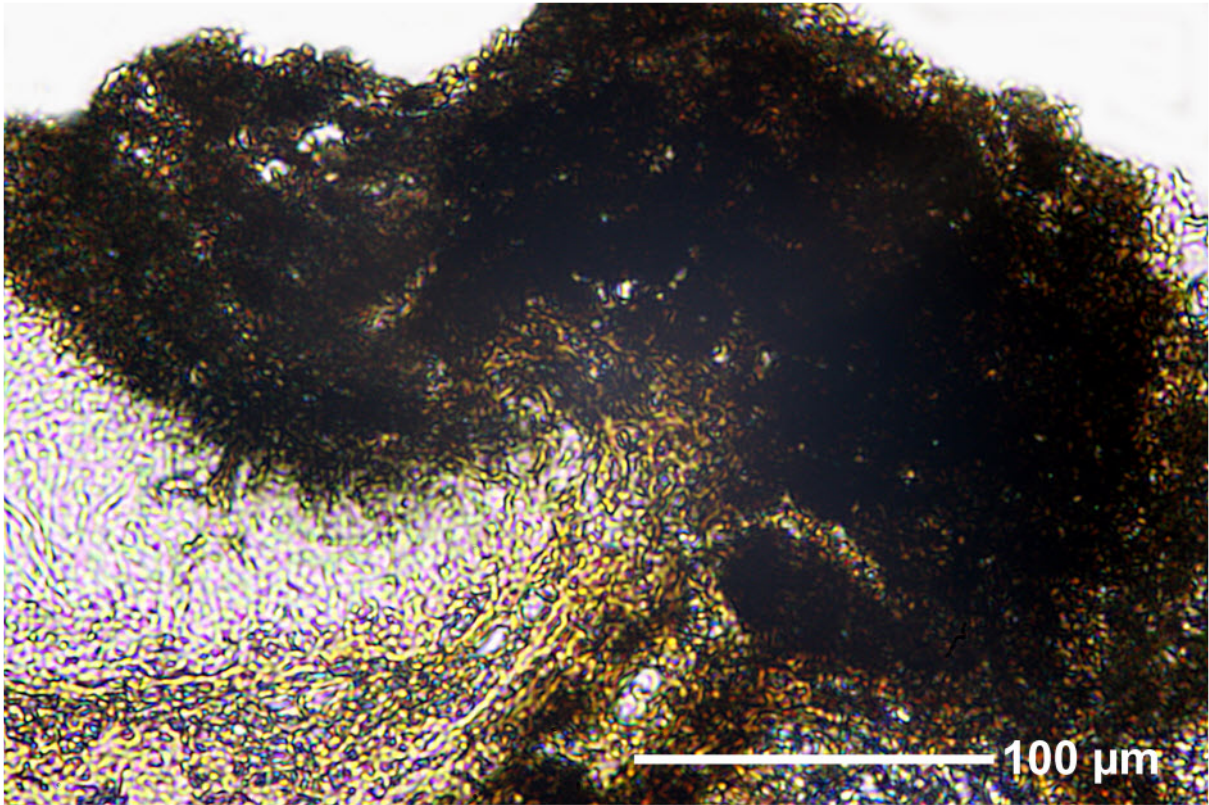
[= *Graphis afzelii* Ach.]

Lirellae white pulveraceous, not or rarely branched, 1-10 x 0.5-1 mm. Hymenium 100  $\mu$ m, not inspersed. Excipulum laterally carbonaceous. Hypothecium yellowish. Spores 8/ascus, hyaline, transversely 3(-4)-septate, lumina rounded, 16-22 x 7-10  $\mu$ m, I-. Lirellae C+ red. Lecanoric acid. Pantropical.

[14501], Seychelles, La Digue, zwischen Belle Vue (Nid d' Aigles) und Fond Piment, 4°22' S, 55°50' E, ca. 340 m, auf *Cinnamomum verum*. Leg. Schumm & Frahm 03.10.2008, det. Schumm test. Aptroot 2008.







*Dyplolabia afzelii*