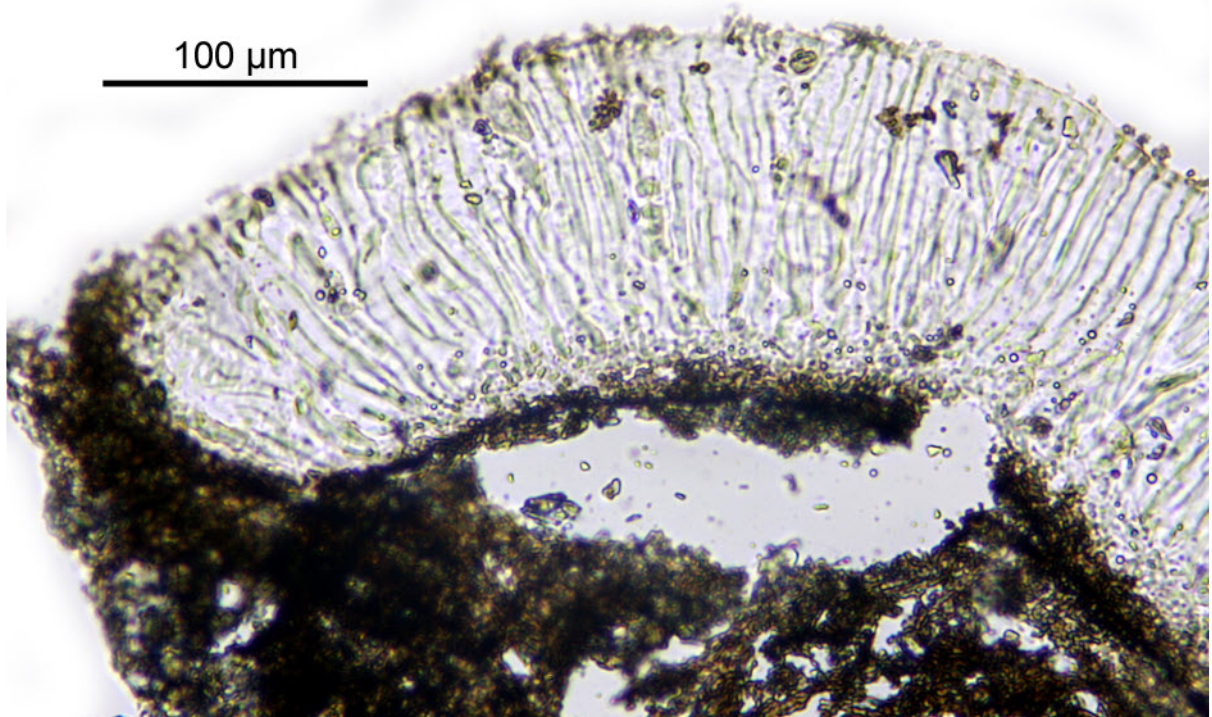
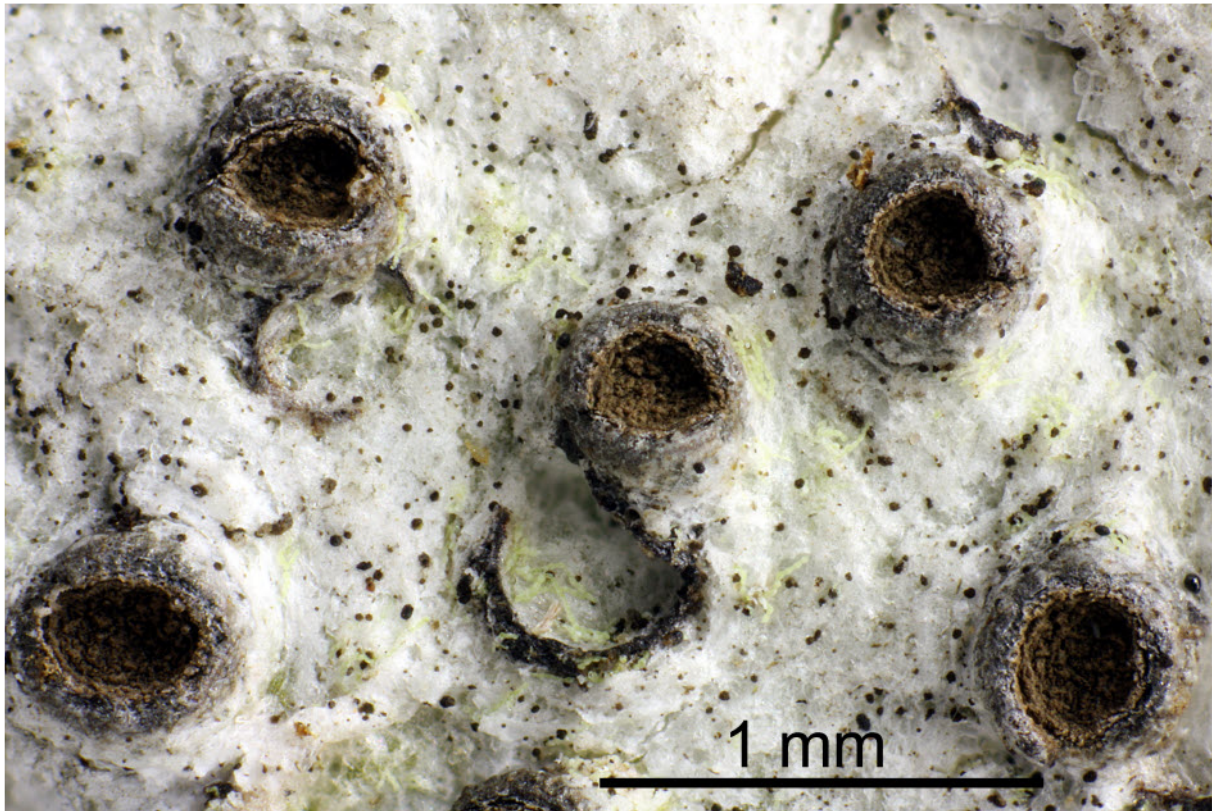
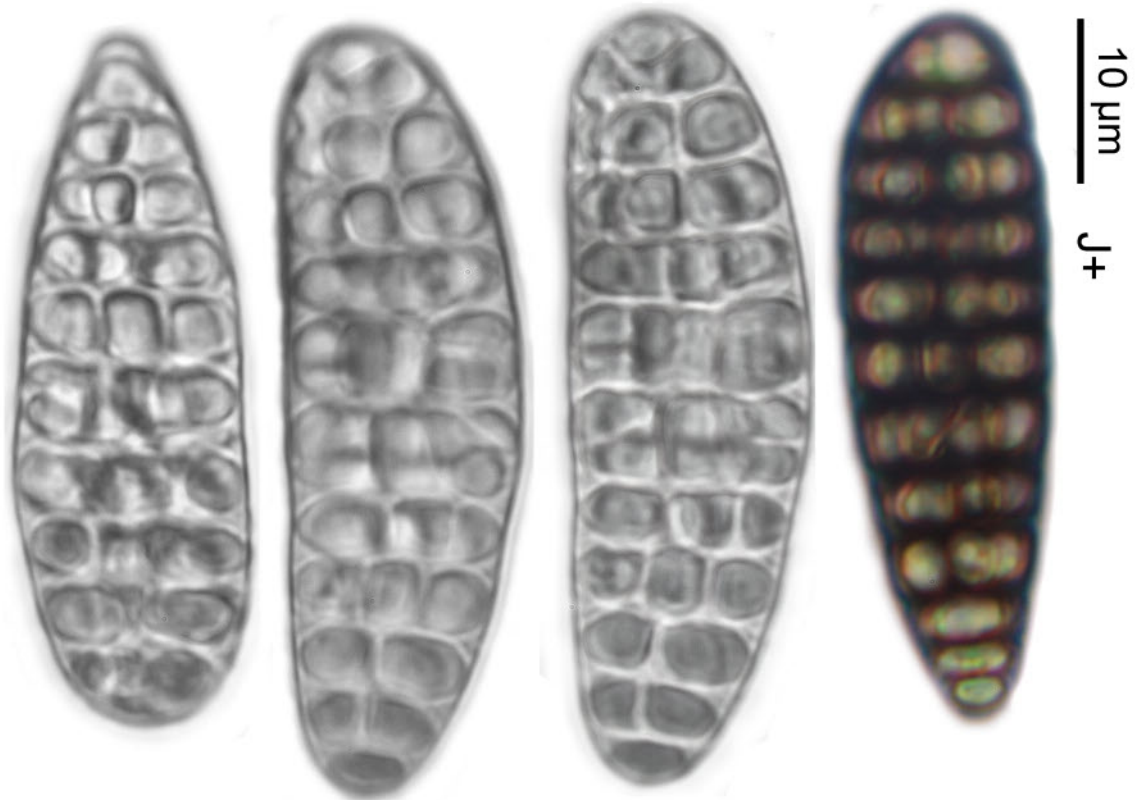
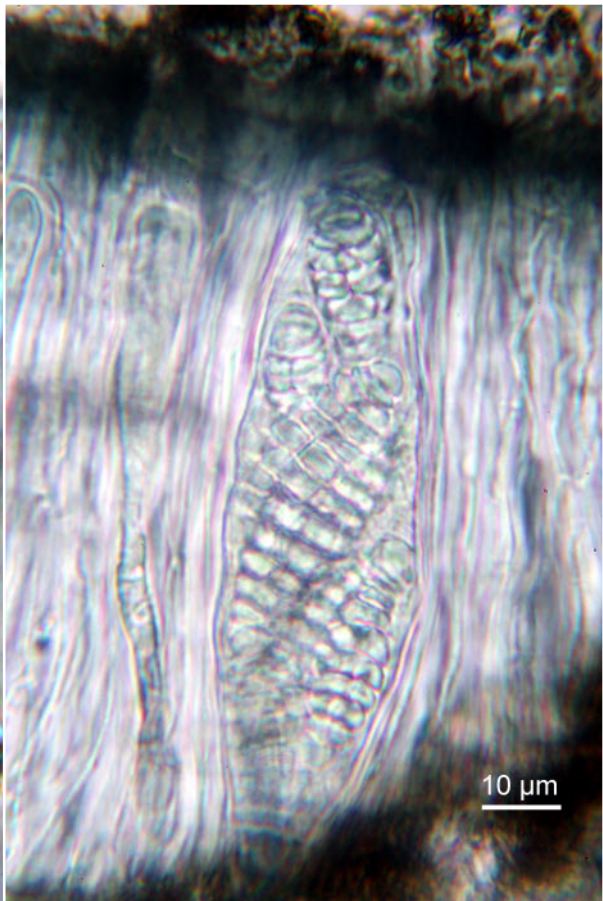
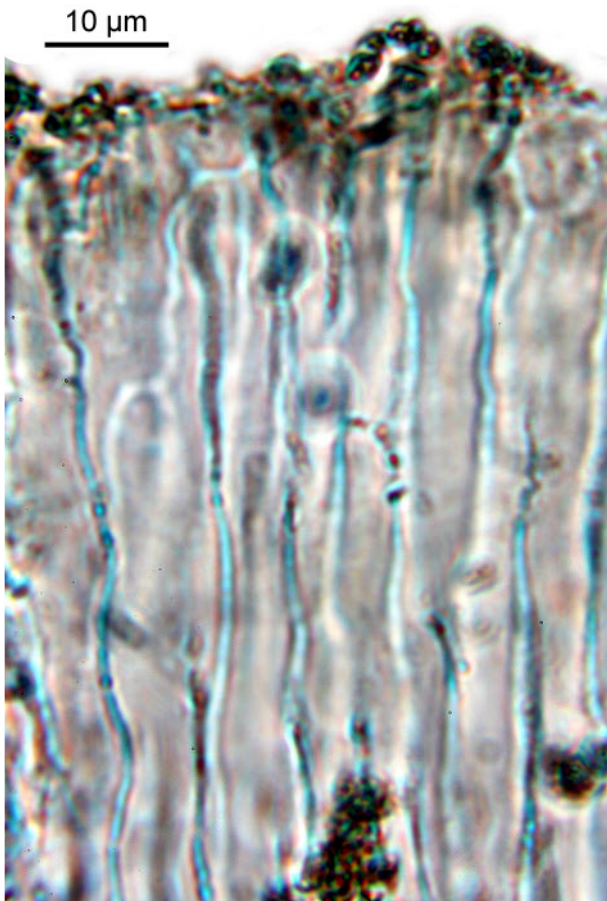


Glyphis scyphulifera (Ach.) Staiger

Spores hyaline, muriform, I+ blue black, 43-55 x 13-15 μm . Hymenium hyaline, not inspersed, c. 115 μm . Hypothecium and excipulum carbonaceous. Paraphyses rarely with anastomoses, distant standing, tips brown. Phytobiont: *Trentepohlia* Corticolous. Pantropical.

[14437], Seychelles, W-Praslin, Anse Lazio, beim Hotel Bonbon Plume; 4°17.611' S, 55°42.131' E, ca. 2 m. Leg. Schumm & Frahm 29.09.2008, det. Schumm test. Aptroot 2008.





Glyphis scyphulifera