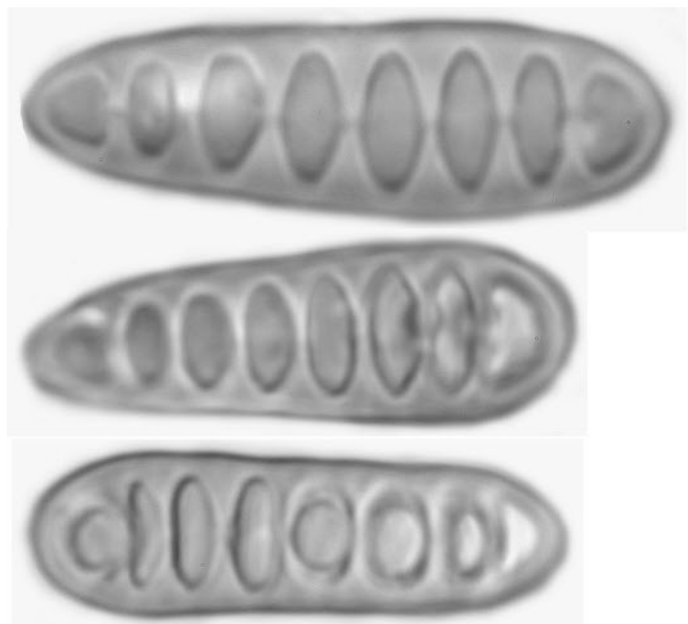


*Graphis aperiens* Müll.Arg.

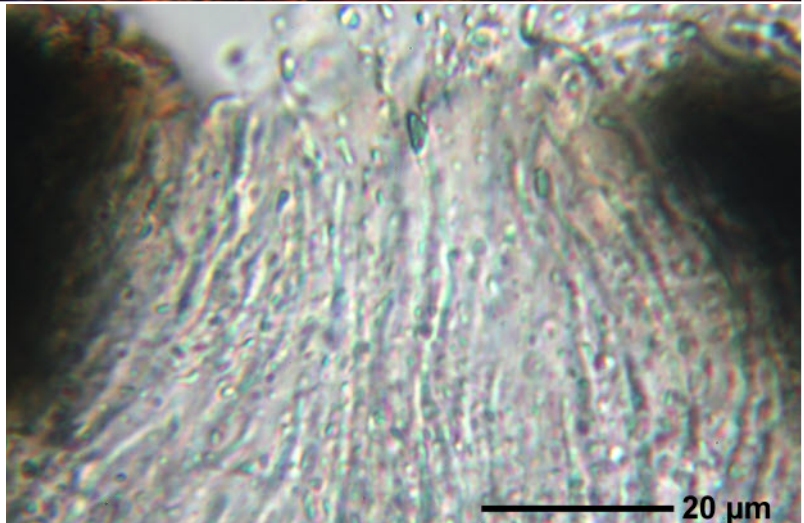
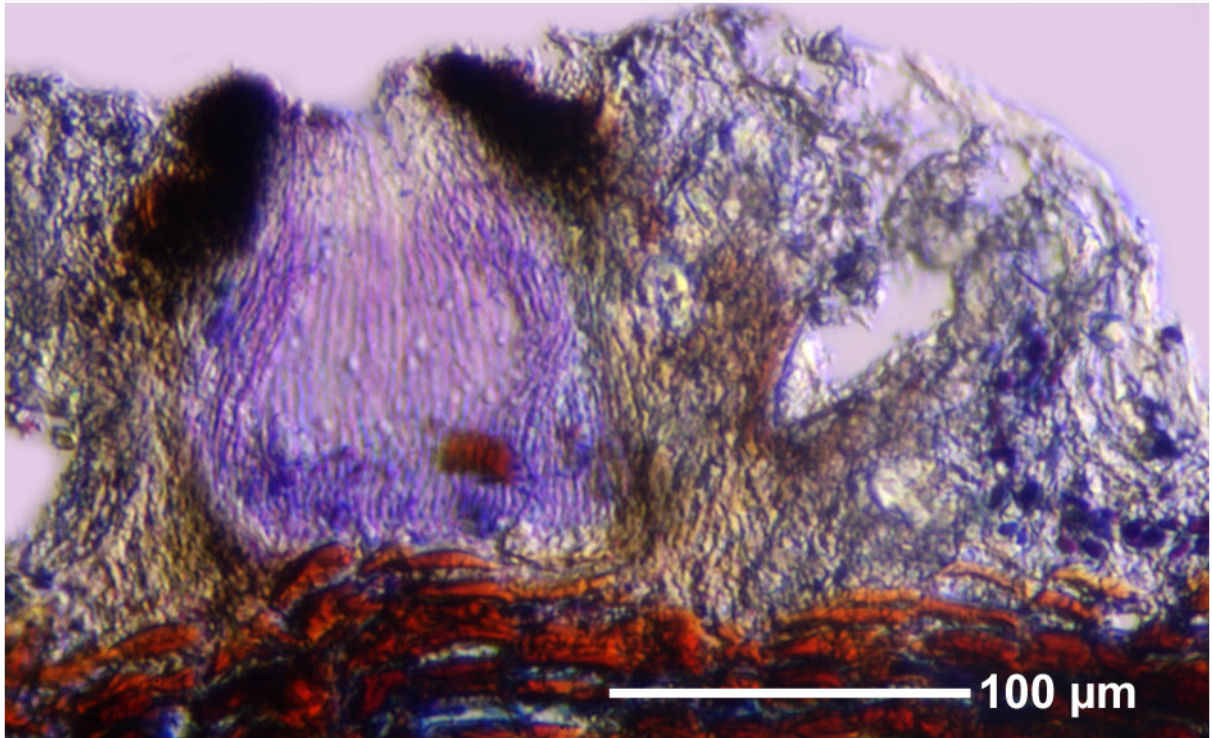
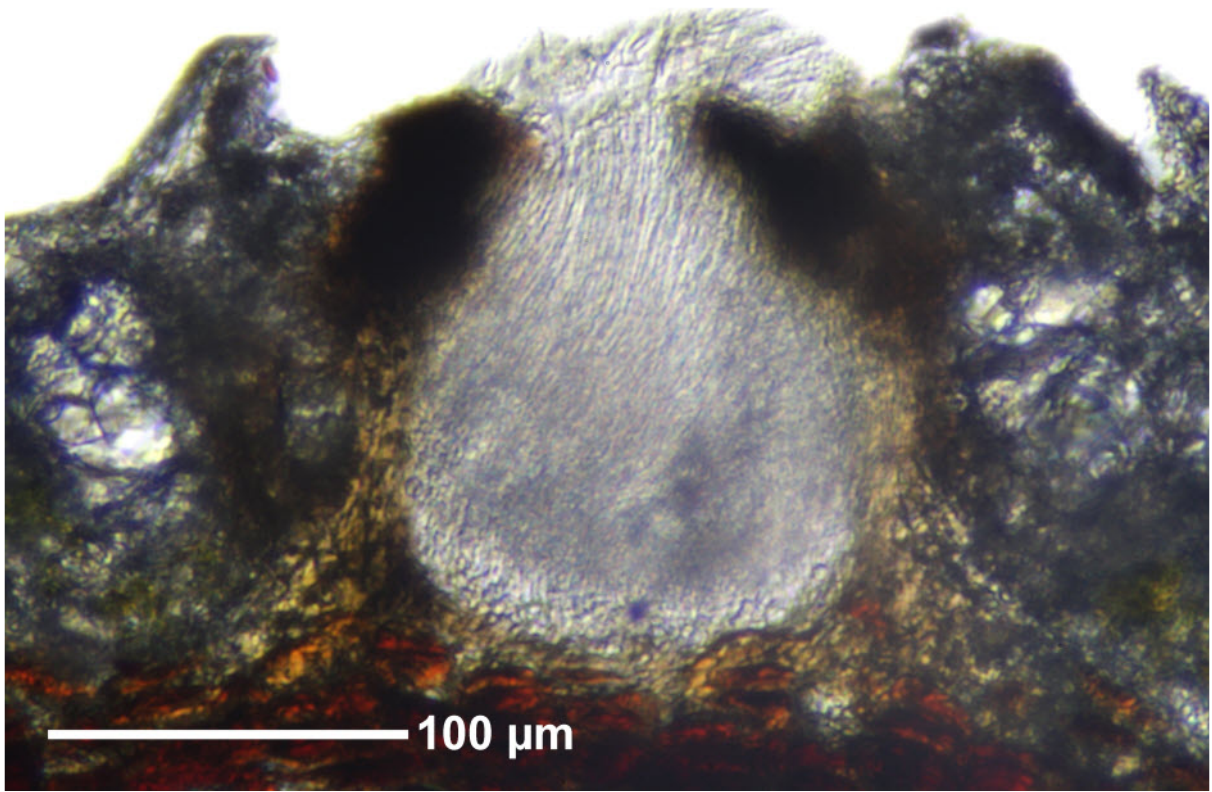
Apothecium margin not striate, excipulum mainly apically carbonized. Hymenium inspersed. Spores transversely 7-septate, 20-32 x 8-10  $\mu\text{m}$ . Thallus K+ yellow>red. Corticolous.

[14589], Seychelles, Mahe, Sentier de Randonnée de Glacis-Trois Frères Nature Trail, 4°38.210' S, 55°26.7968' E, ca. 480 m. Leg. Schumm & Frahm 07.10.2008, det. Aptroot 2008.



10  $\mu\text{m}$





*Graphis aperiens*