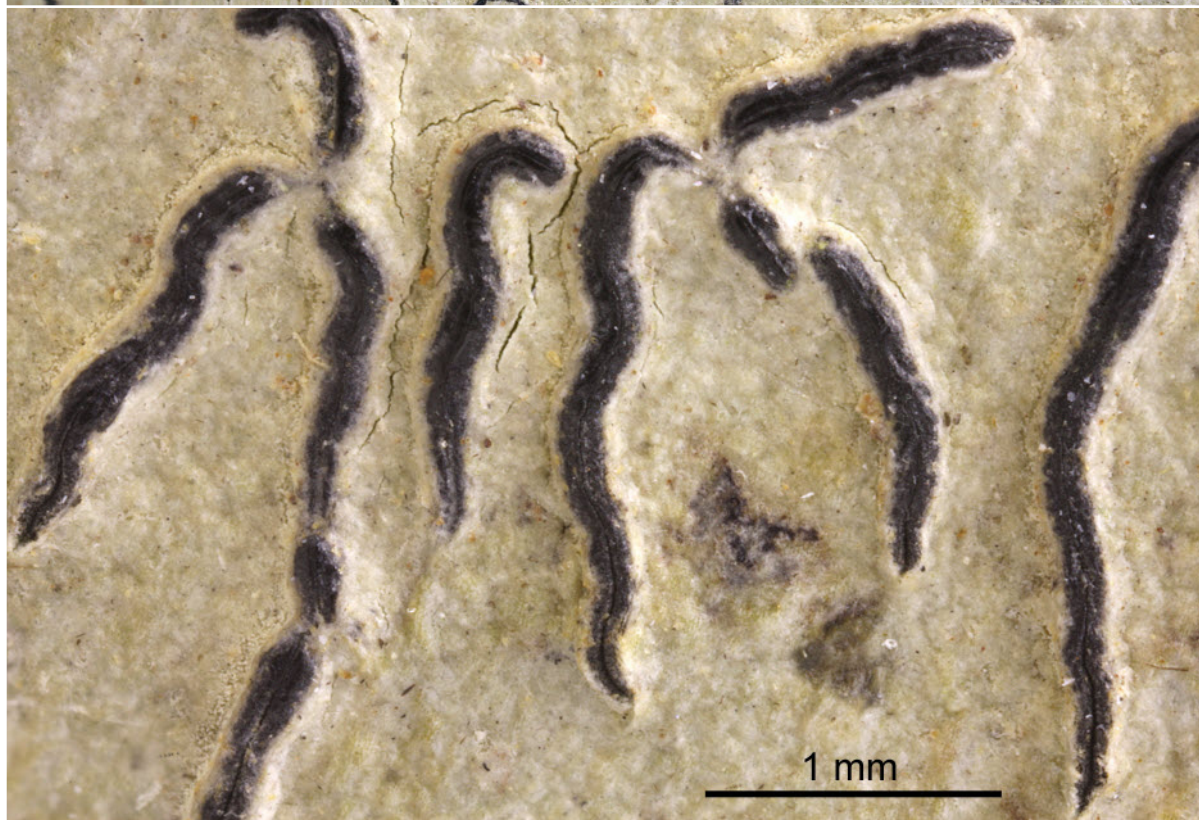
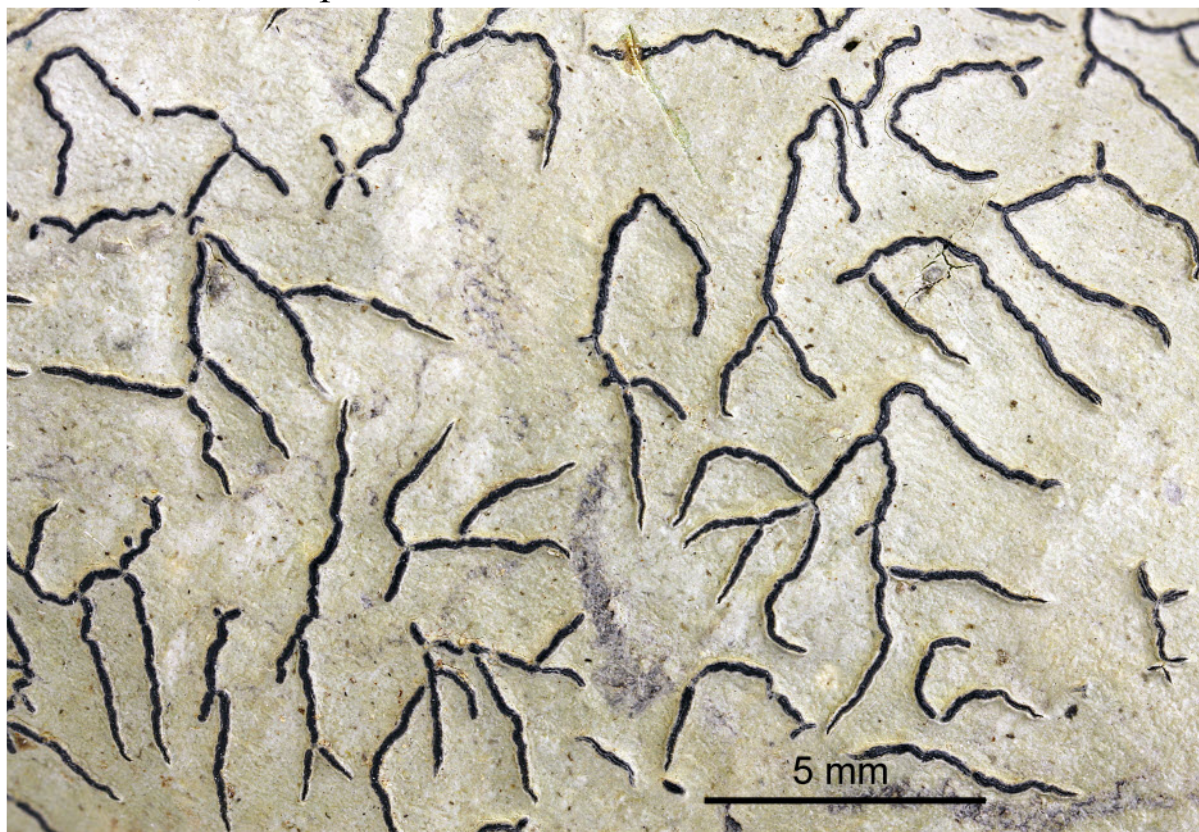
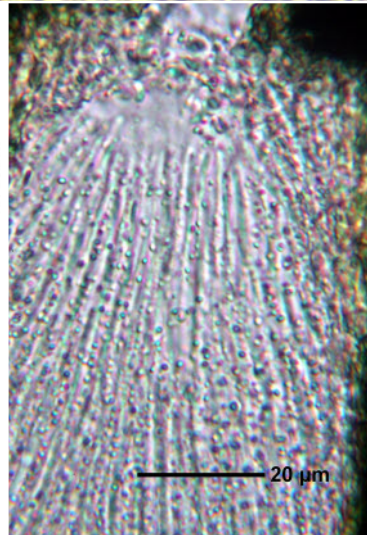
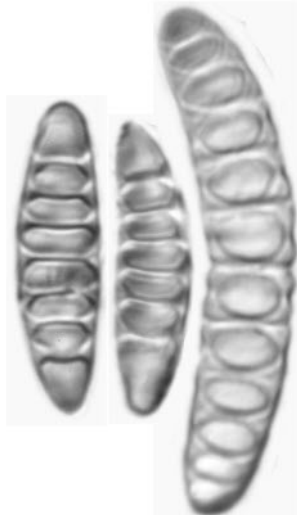
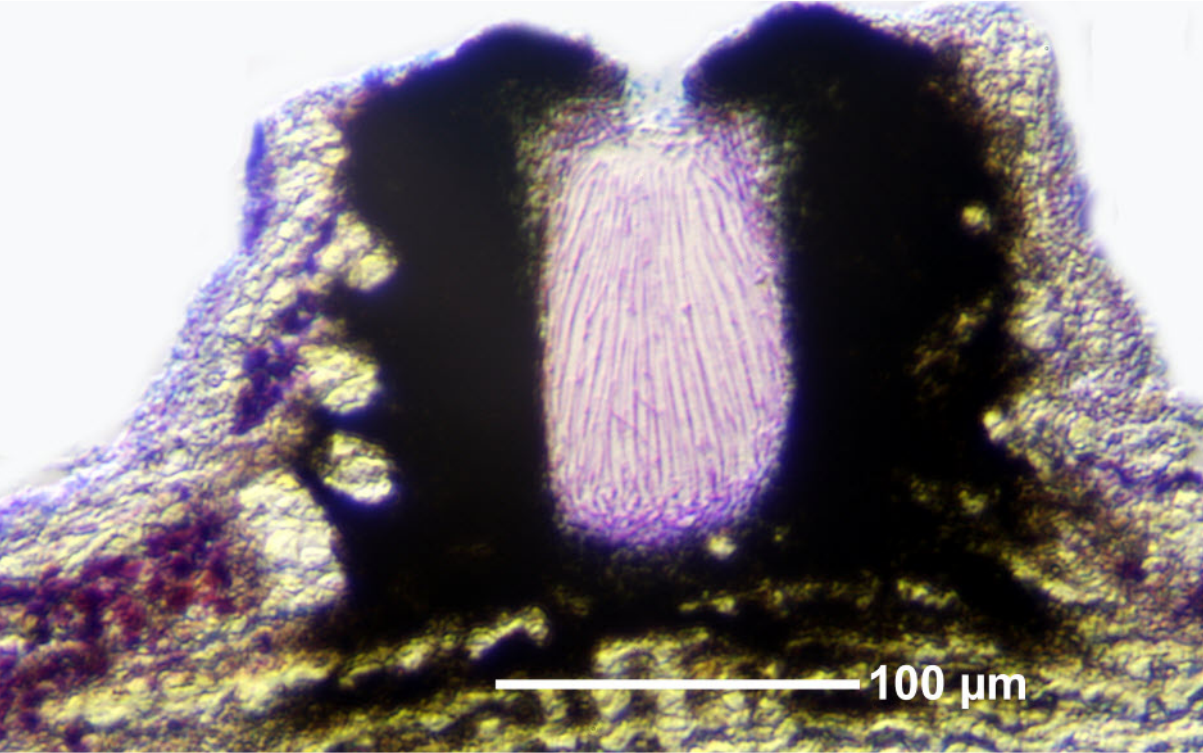
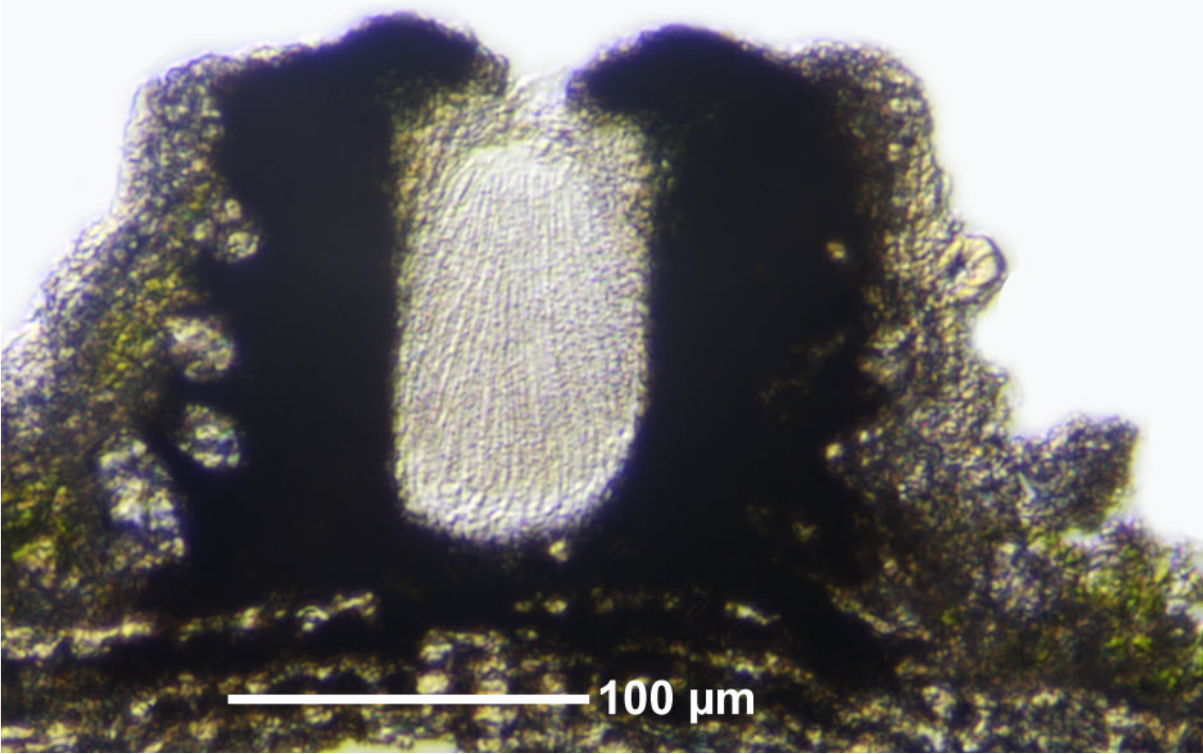


Graphis arbusculaeformis (Vain.) Lücking

Hymenium inspersed. Excipulum carbonized all around. Spores 40-50 x 7-8 μm , (7-)11-15 septate. Thallus K-. Palaeotropical.

[14608], Seychelles, Mahe, Morne Seychelles National Park, Sentier de Copolia, 4°38.828' S, 55°27.166' E, ca. 400 m. Leg. Schumm & Frahm 08.10.2008, det. Aptroot 2008.





Graphis arbusculaeformis