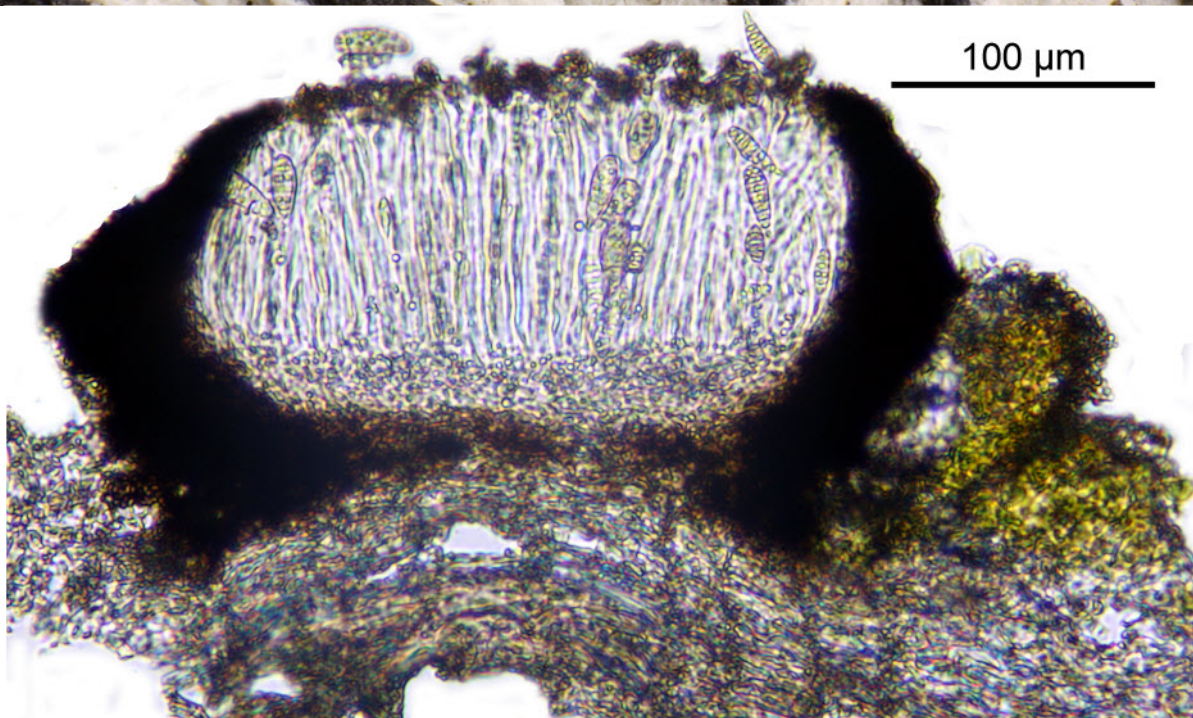
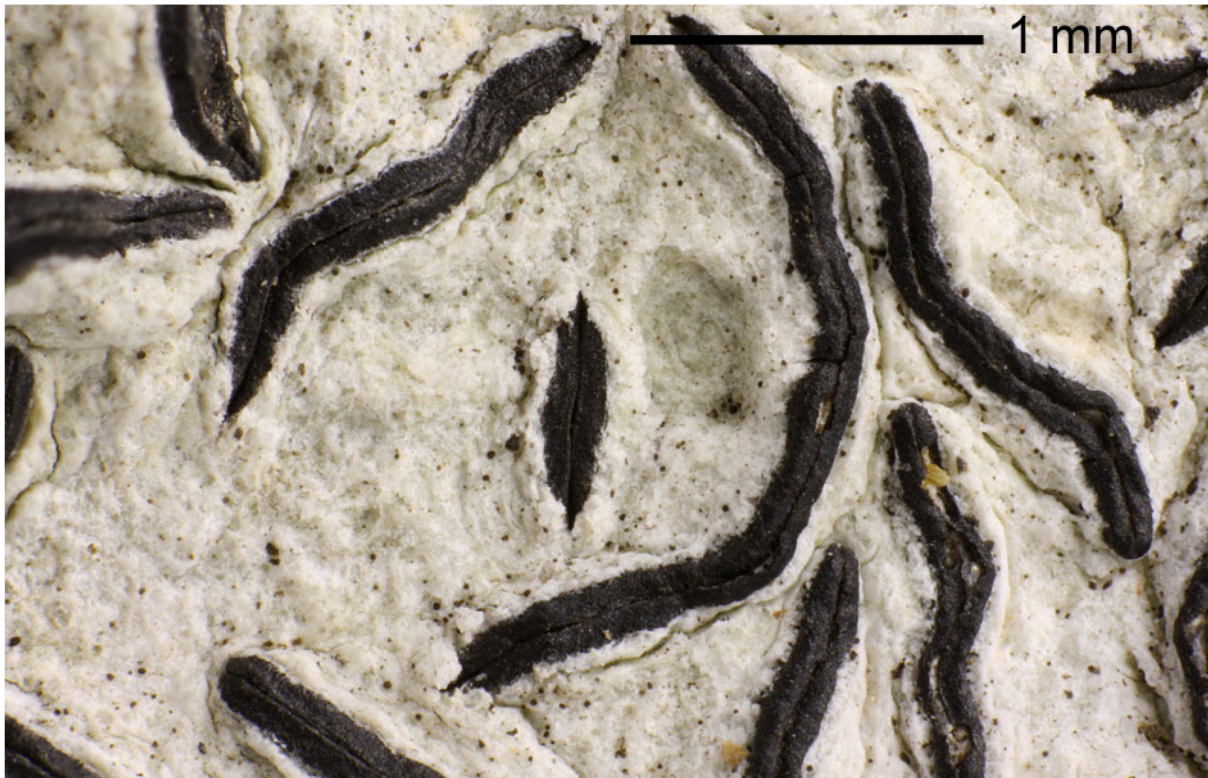


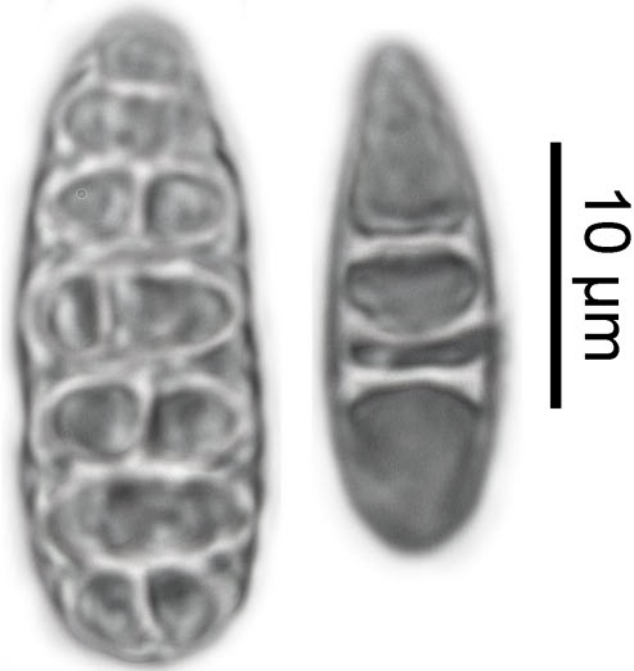
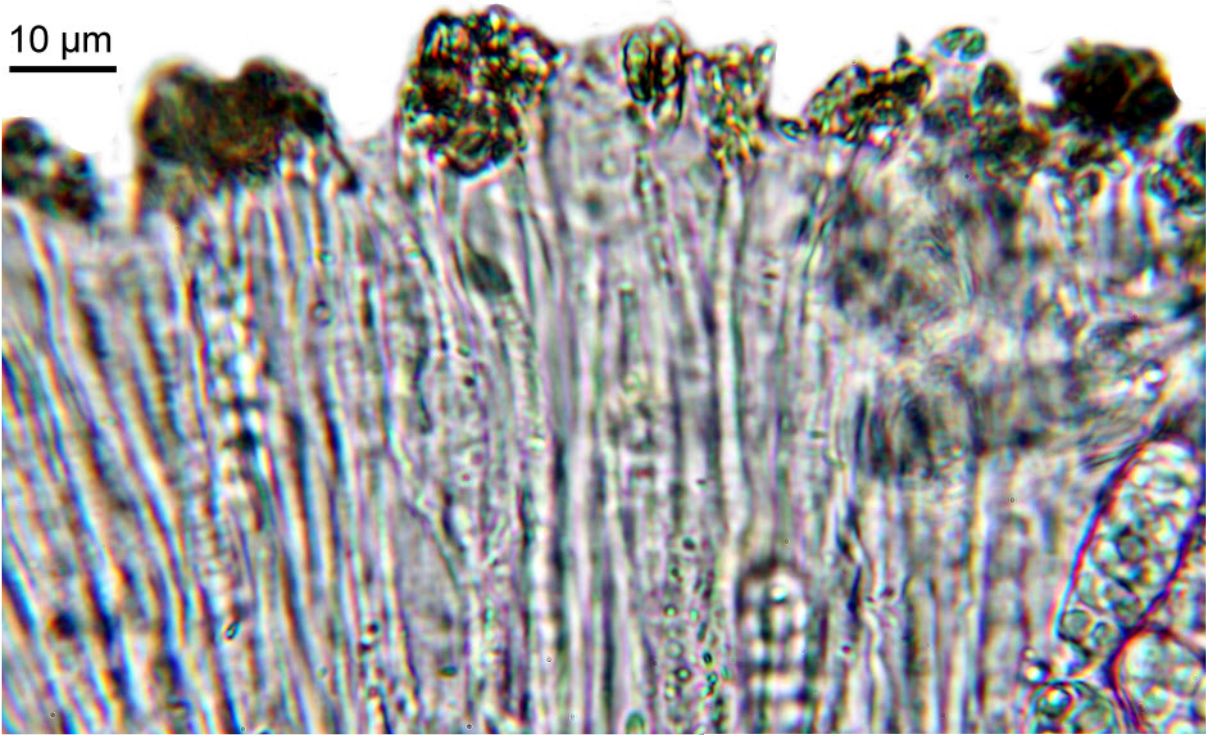
*Graphis cremicolor* (H.Magn.) Lücking & Archer

Spores muriform, hyaline, I+ blue, 27-31 x 9-10  $\mu\text{m}$ . Excipulum carbonized all around. Hymenium not interspersed. Thallus K+yellow>red, C-, KC-. Pantropical.

[14436], Seychelles, Praslin, Anse Lazio, beim Hotel Bonbon Plume; 4°17.611' S, 55°42.131' E, ca. 2 m. Leg. Schumm & Frahm 29.09.2008, det. Aptroot 2009.



10  $\mu$ m



*Graphis cremicolor*