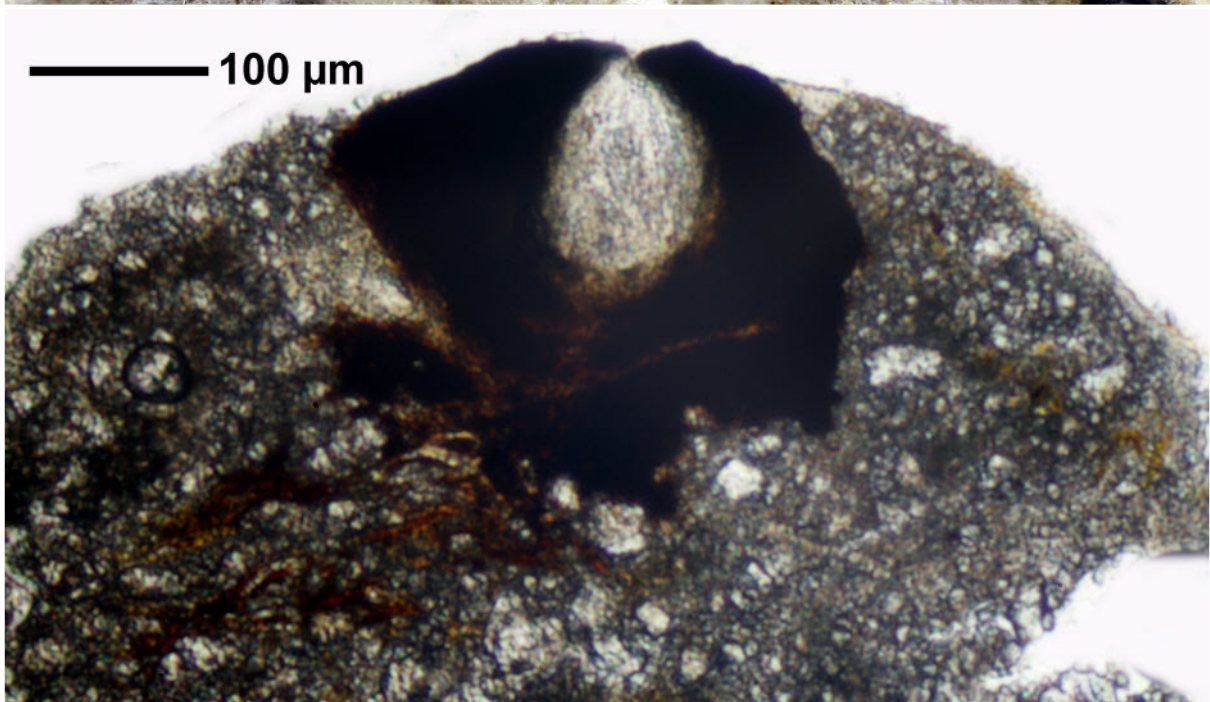


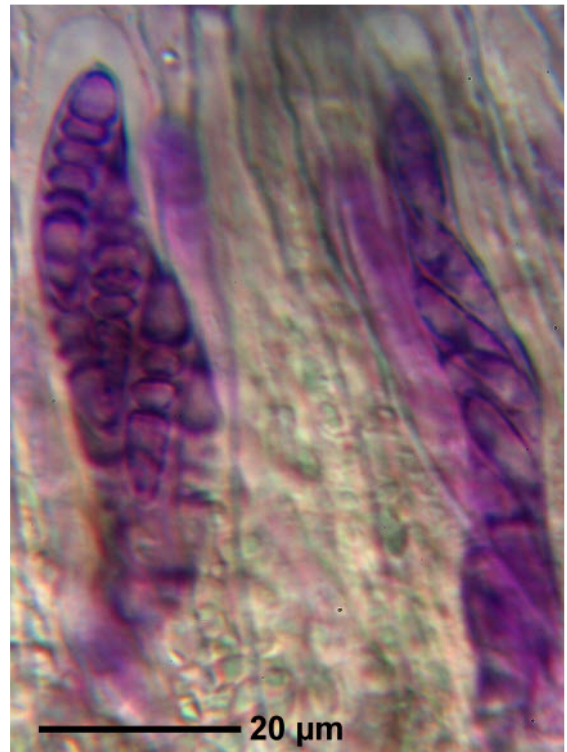
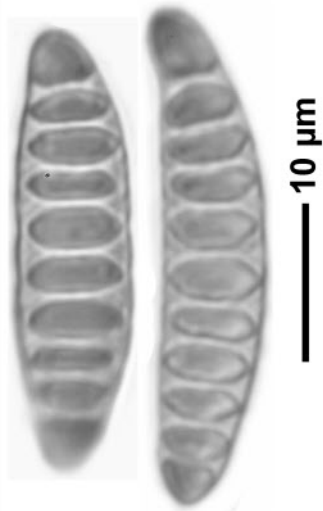
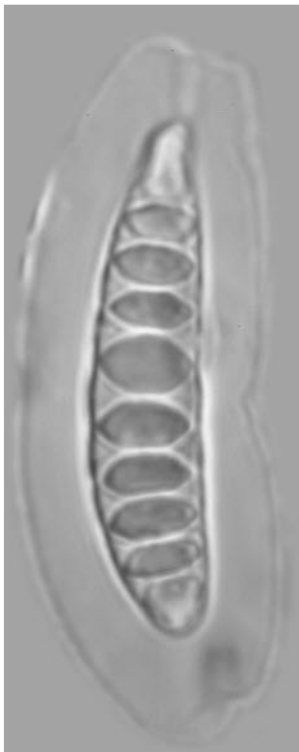
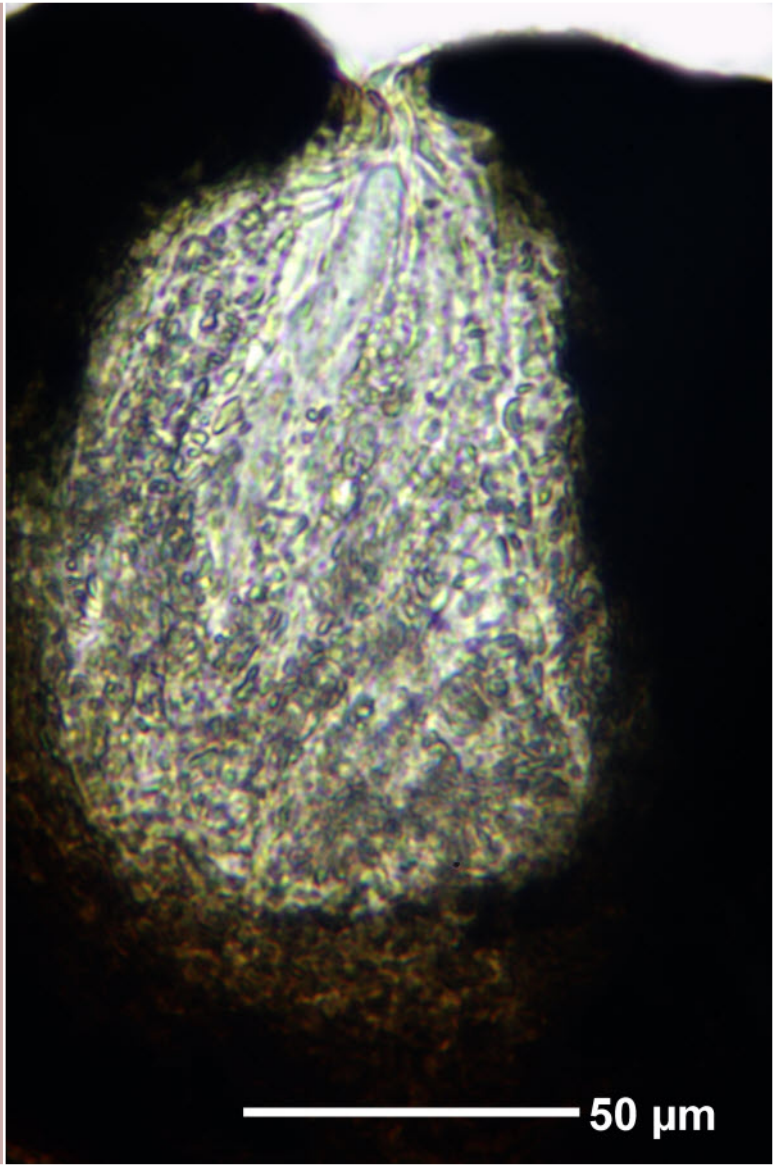
*Graphis gonimica* Zahlbr.

Spores hyaline, 9-11 septate, c. 35 x 7  $\mu\text{m}$ . Excipulum completely carbonized. Hymenium inspersed. Thallus K+ yellow>red. Palaeotropical.

[14614], Seychelles, Mahe, Morne Seychelles National Park, Sentier de Copolia, 4°38.828' S, 55°27.166' E, ca. 460 m, an *Cinnamomum* veru. Leg. Schumm & Frahm 08.10.2008, det. Aptroot 2008.







*Graphis gonimica*