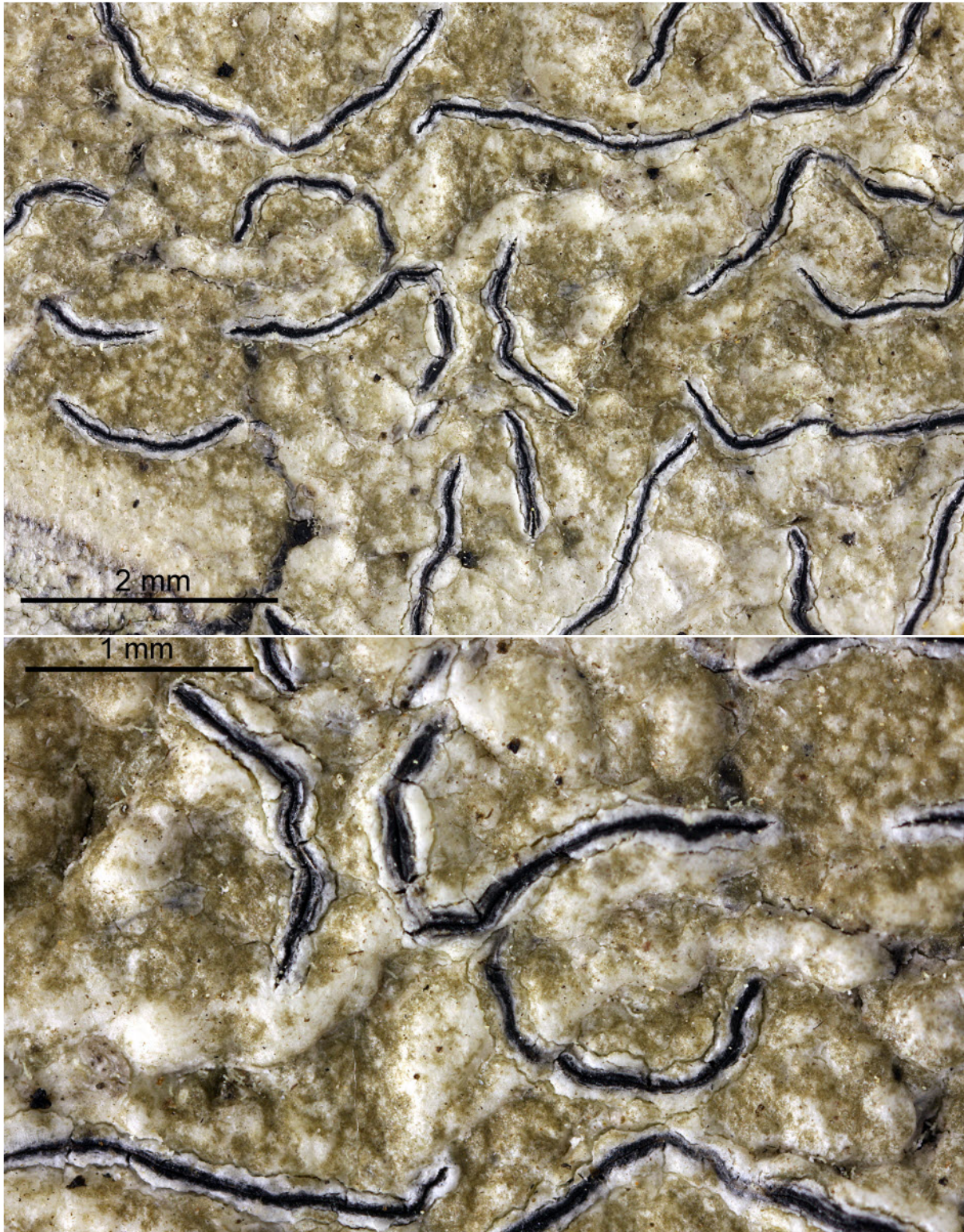
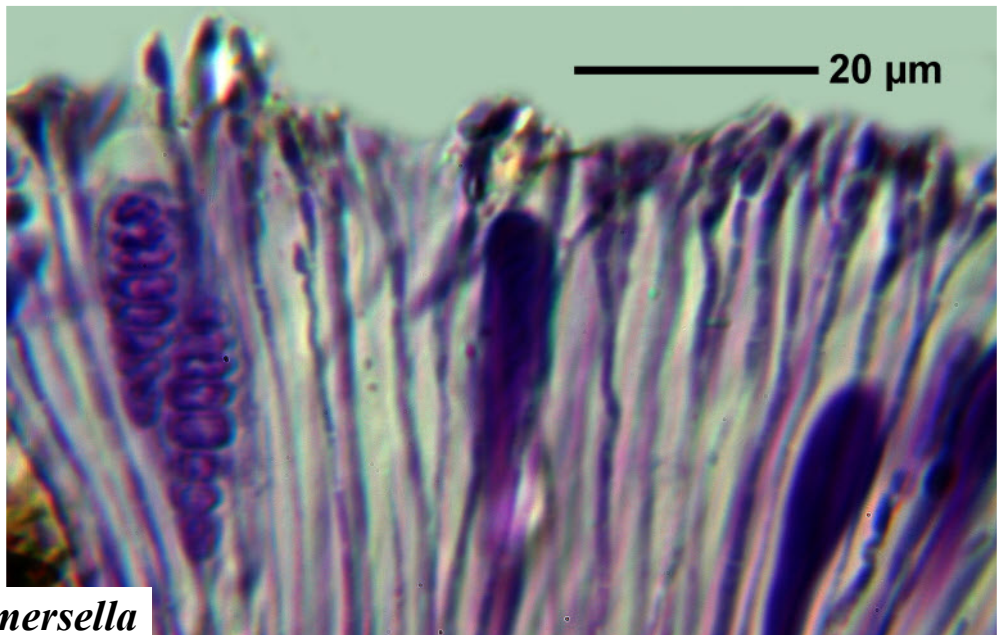
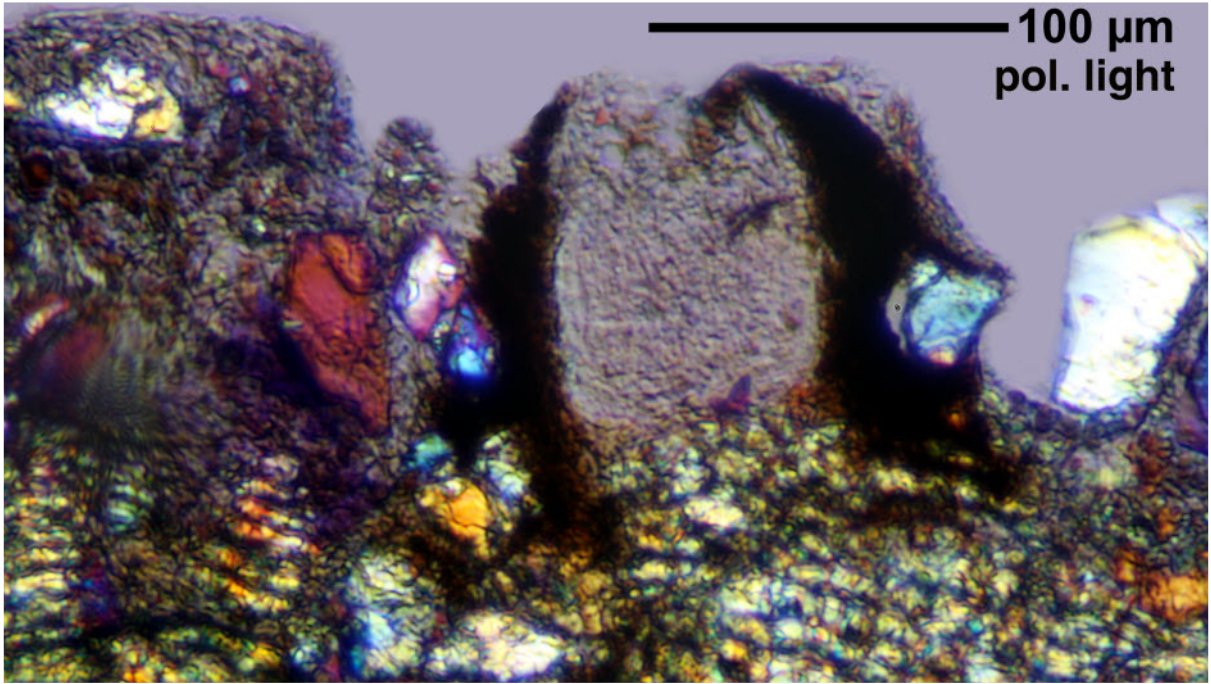
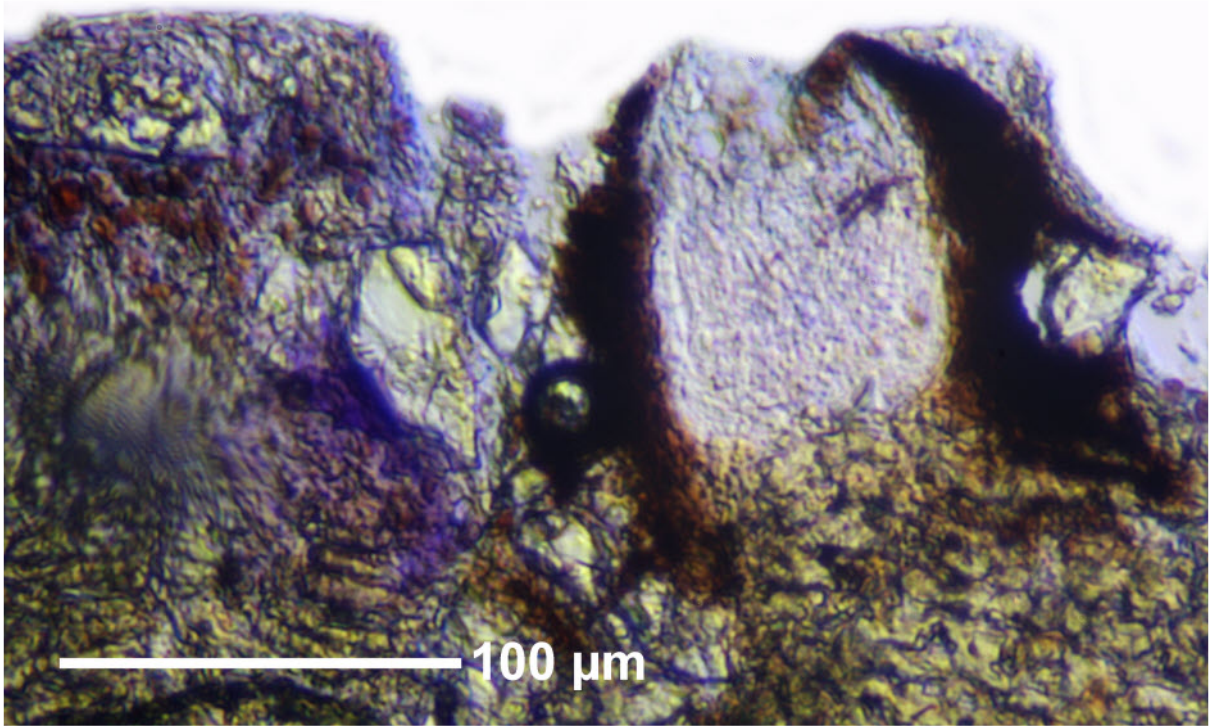


*Graphis immersella* Müll.Arg.

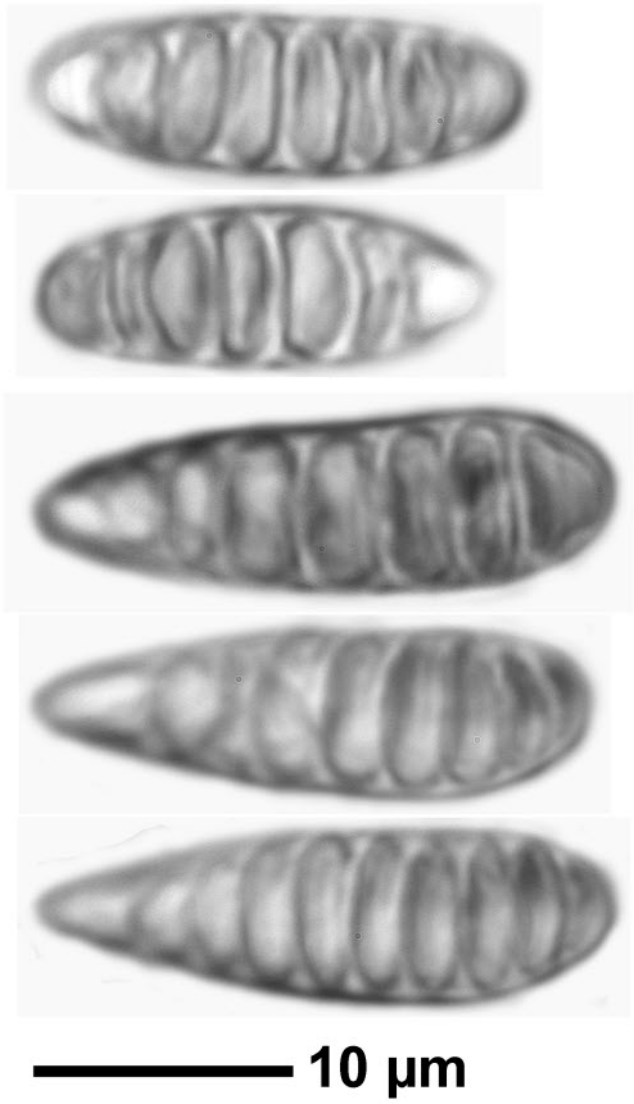
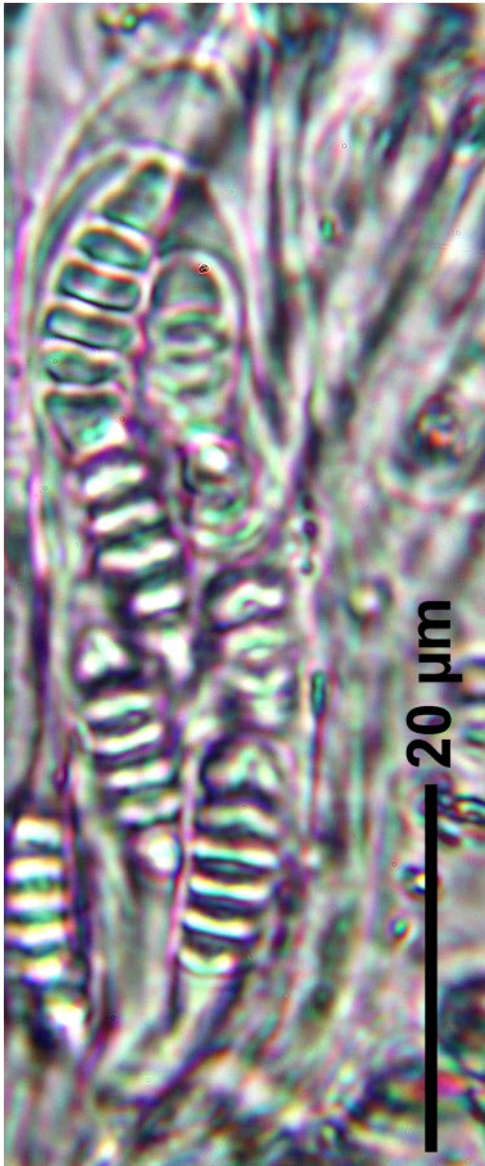
Spores hyaline, 21-23 x 6-7  $\mu\text{m}$ , ca. 8 septate, J+. Excipulum only sideways carbonized. Hymenium not inspersed. Chemistry: stictic acid, thallus K+ brownish yellow > slowly orange red, C-, KC-, P-. Palaeotropical.

[14339], Seychelles, Praslin, Anse La Blague, beim Hotel La Vanilla, 4°19.793' S, 55°47.019' E, 17 m, auf Cocos. Leg. Schumm & Frahm 27.09.2008, det. Aptroot 2008.





*Graphis immersella*



*Graphis immersella*