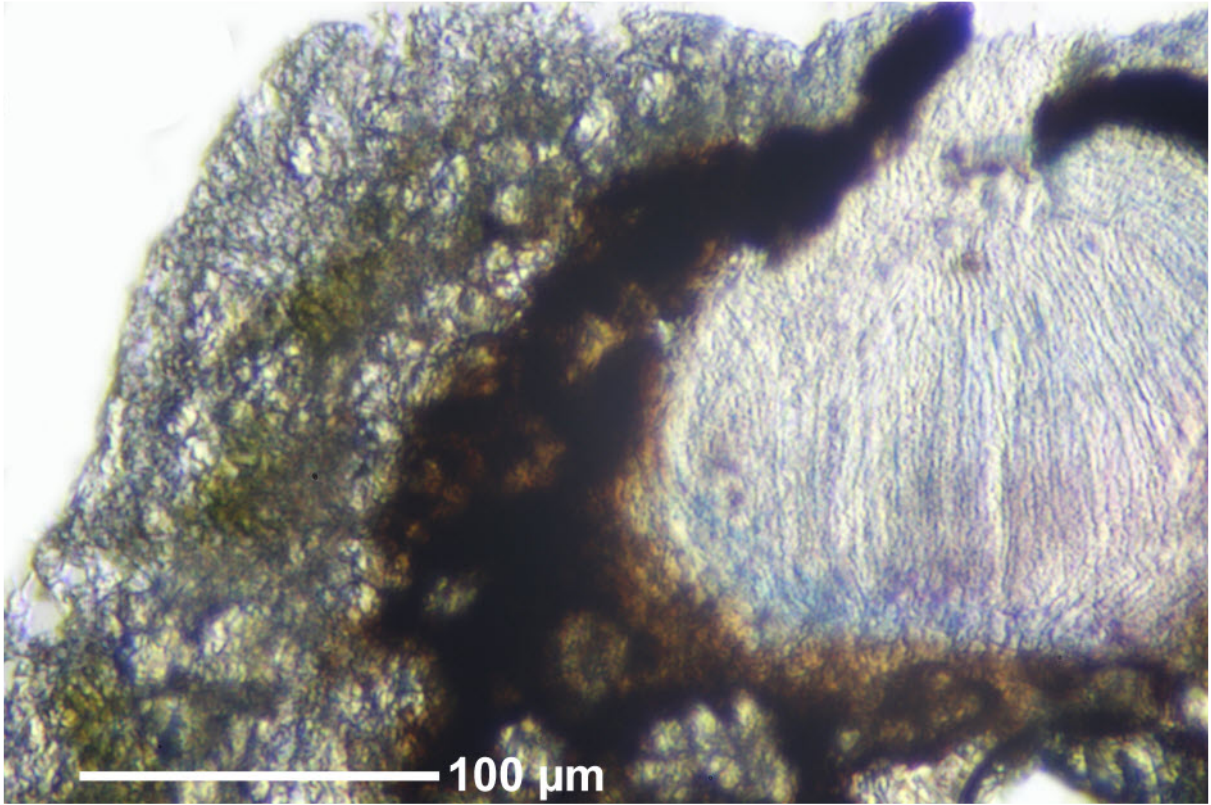
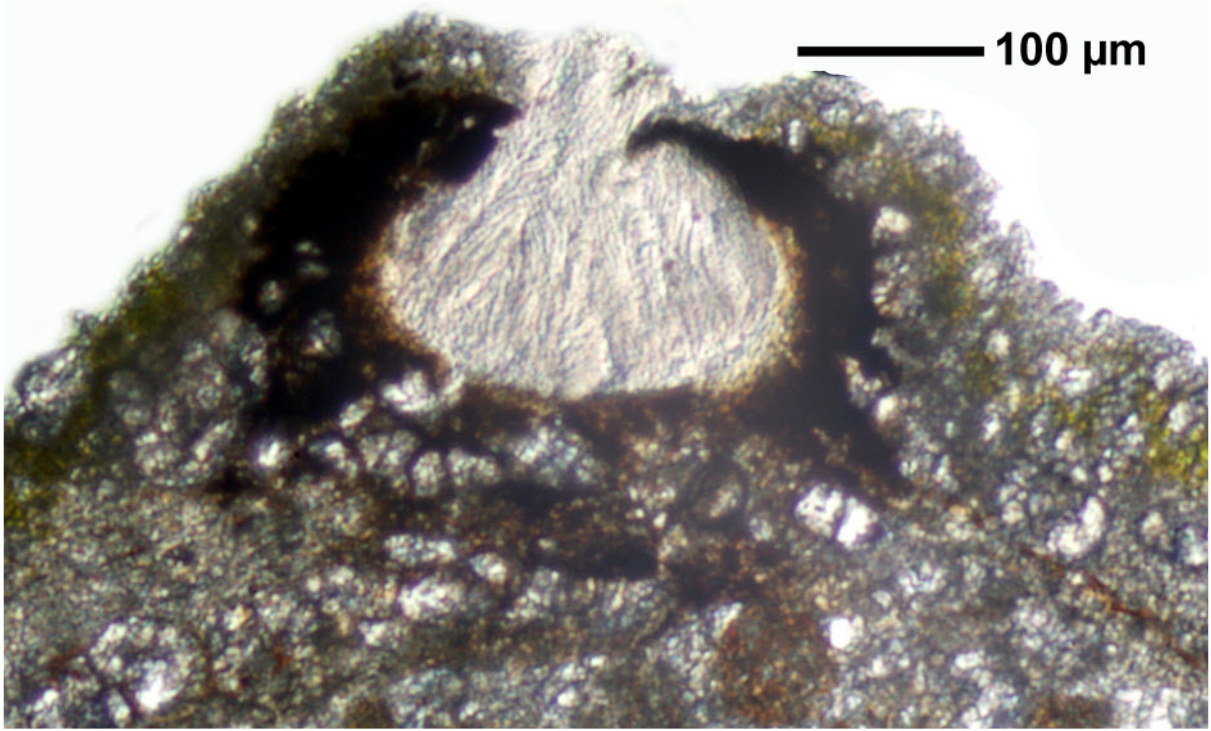


*Graphis insulana* (Müll.Arg.) Lücking  
[= *Graphina insulana* Müll.Arg.]  
[= *Graphina subtartarea* Müll.Arg.]  
[= *Graphina sierraleonensis* C.W.Dodge]  
[= *Graphis rudescens* Nyl.]  
[= *Graphina robusta* Müll.Arg.]  
[= *Graphis orientalis* Vain.]  
[= *Graphis macgregorii* Vain.]

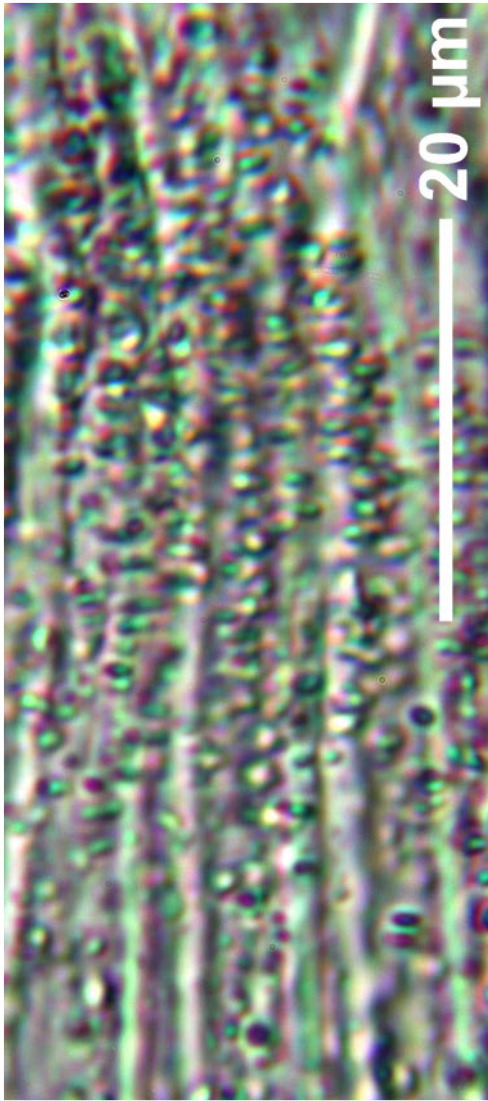
Lirellae 1-5 mm long, 0.3-0.5 mm wide, labia entire. Spores hyaline, muriform, I+ blue, 70-115 x 18-32  $\mu\text{m}$ , 1(-2)/ascus. Excipulum only or mainly sideways carbonized. Hymenium inspersed. Thallus K+ yellow>red, norstictic acid. Palaeotropical.

[14535], Seychelles, La Digue, Wald beim Hotel Sun Rising, 4°21.465' S, 55°49.653' E, ca. 10-20 m, an *Cocos nucifera*. Leg. Schumm & Frahm 04.10.2008, det. Aptroot 2008.

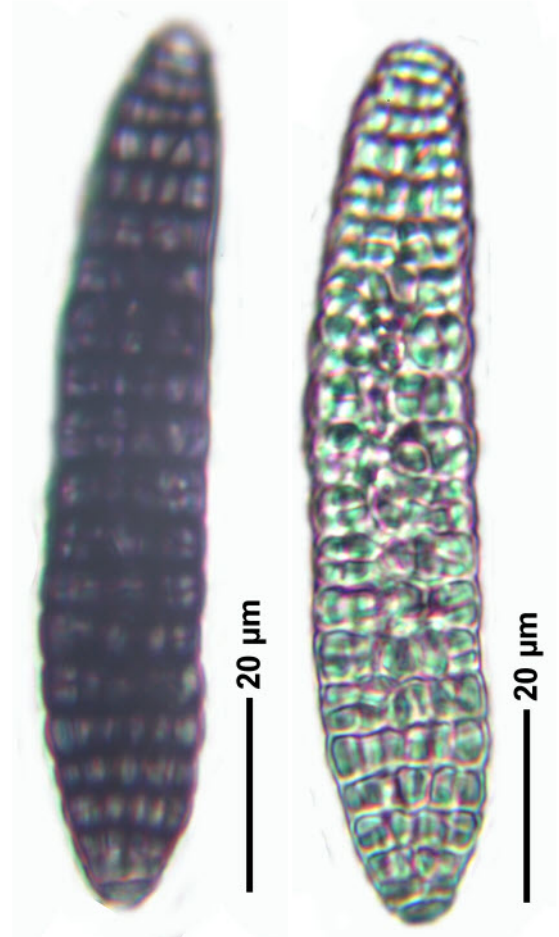




*Graphis insulana*



I+



*Graphis insulana*