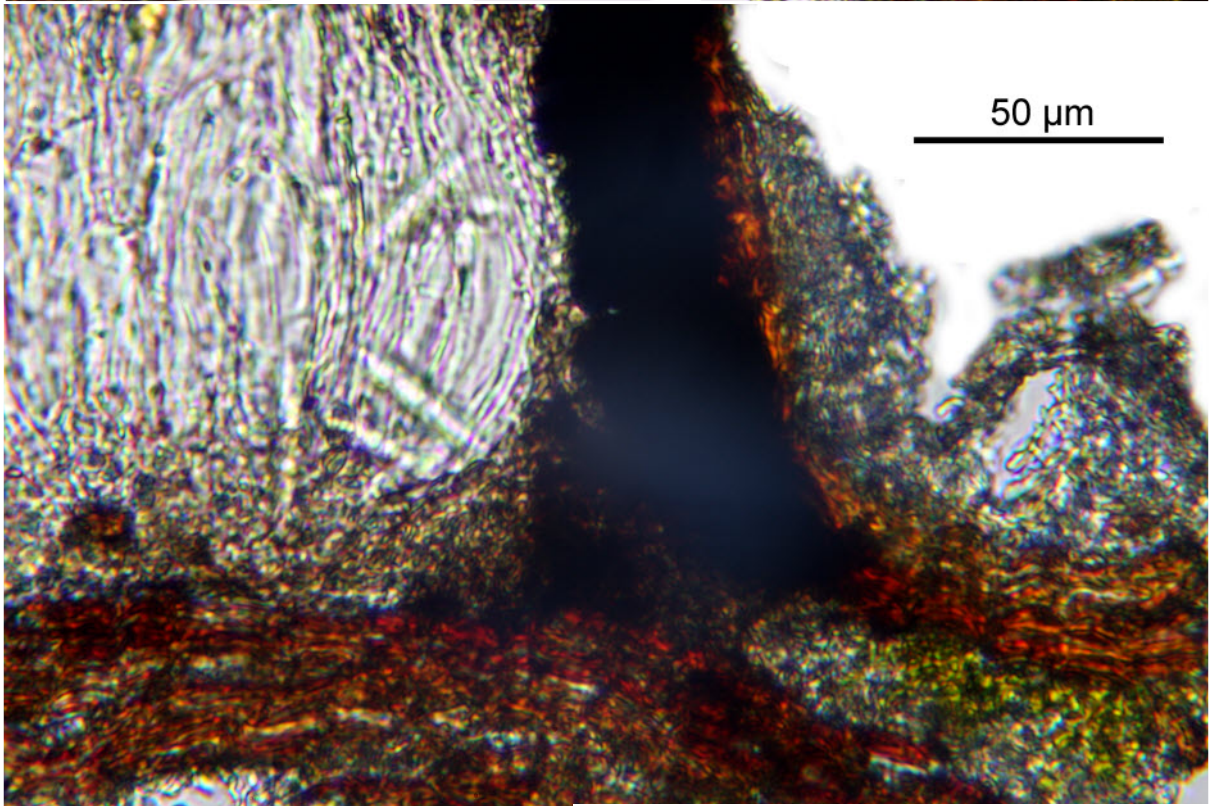
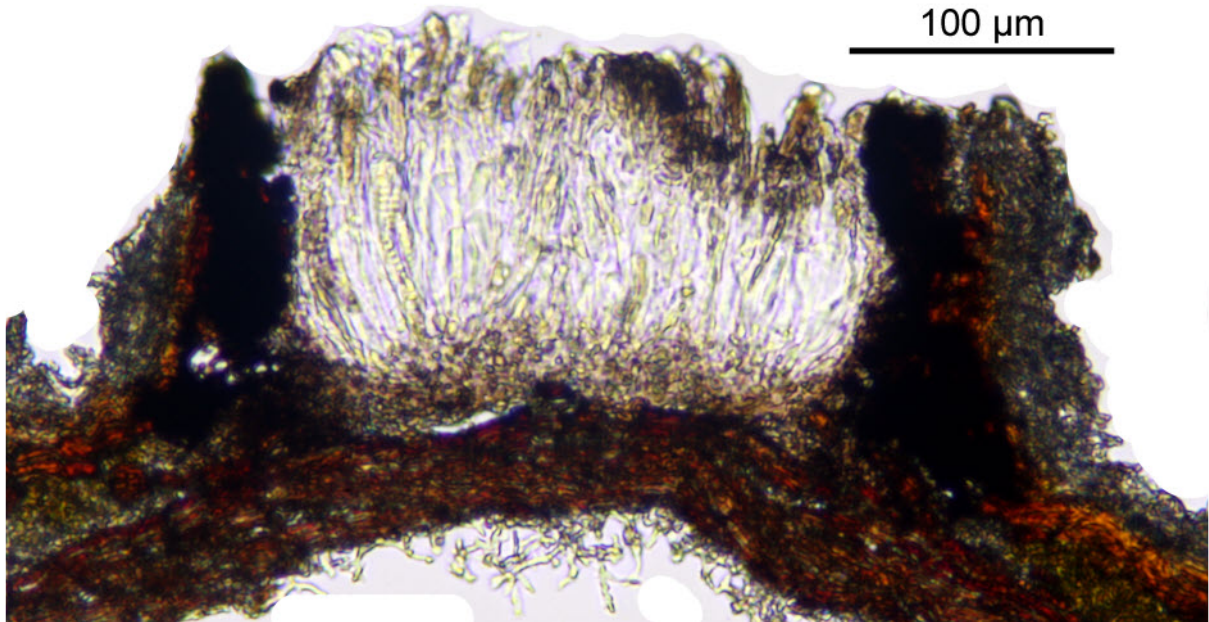


Graphis librata C.Knight

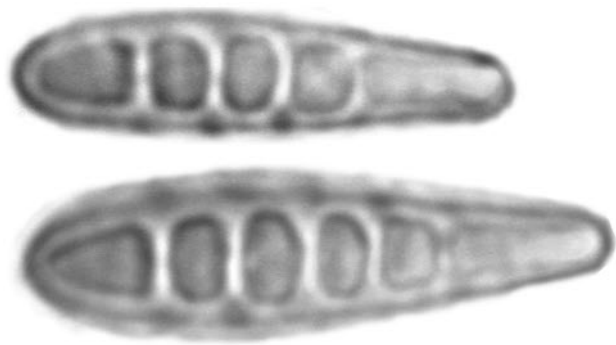
Spores hyaline, 5-8-septate, J-, 26-42 x 6-8 μm . Excipulum only sideways carbonized. Hymenium not inspersioned, I+ red and blue. Thallus K+yellow>red. Pantropical.

[14417], Seychelles, Praslin, Curieuse Bay, Mündung des Pasquiere River Nr. 1; 4°18.712' S, 55°43.276' E, 2 m; auf *Casuarina equisetifolia*. Leg. Schumm & Frahm 29.09.2008, det. Aptroot 2008.





10 μm



Graphis librata