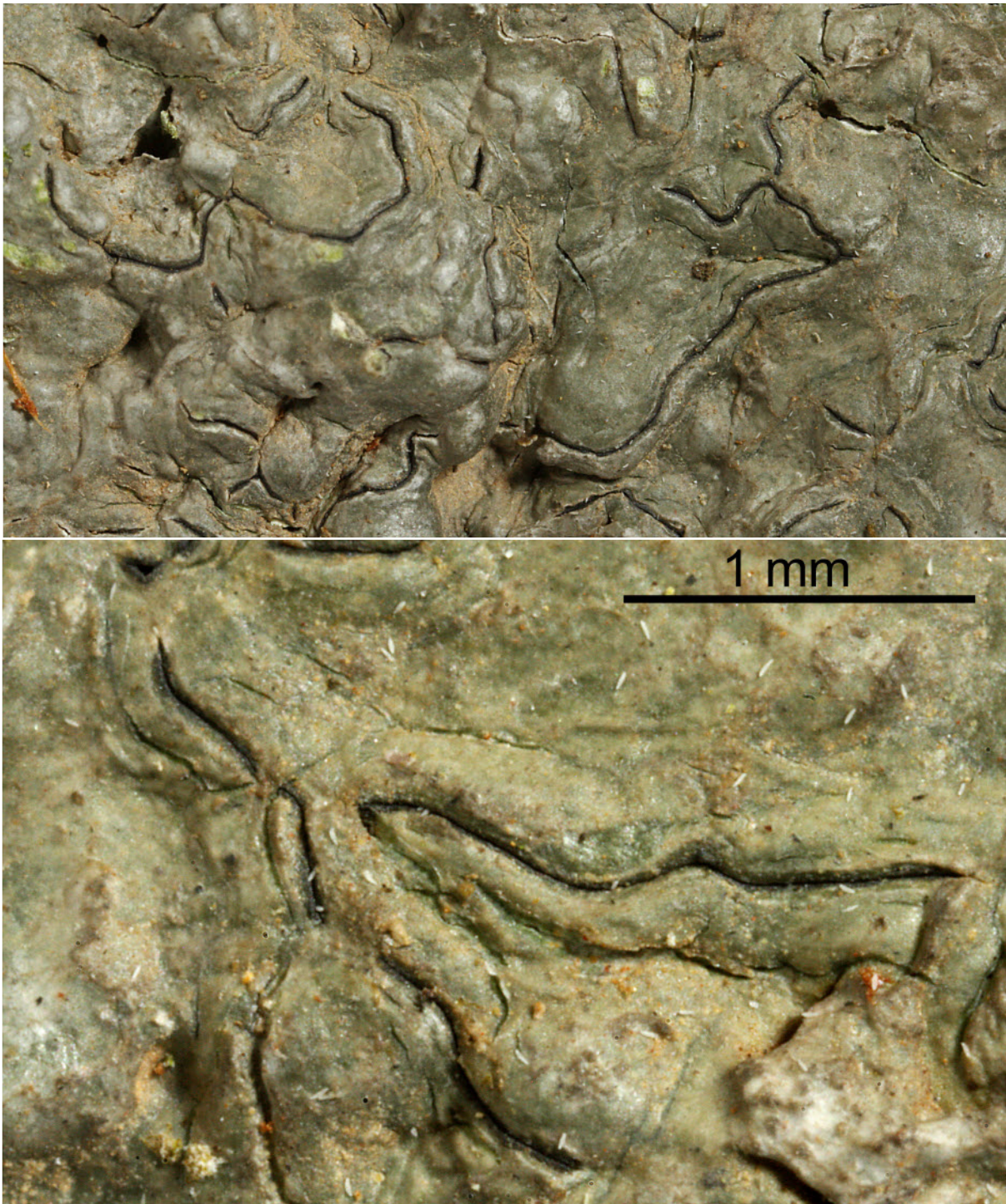
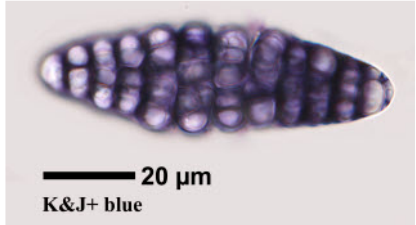
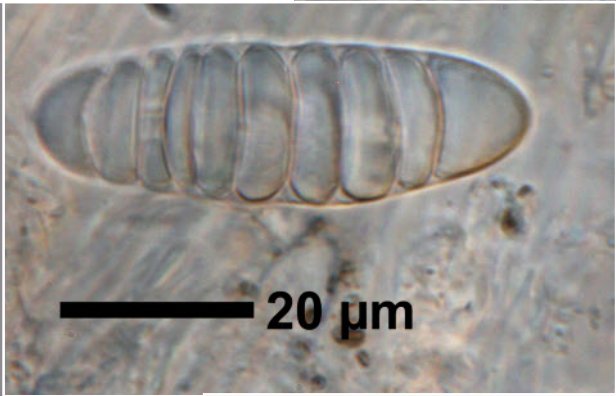
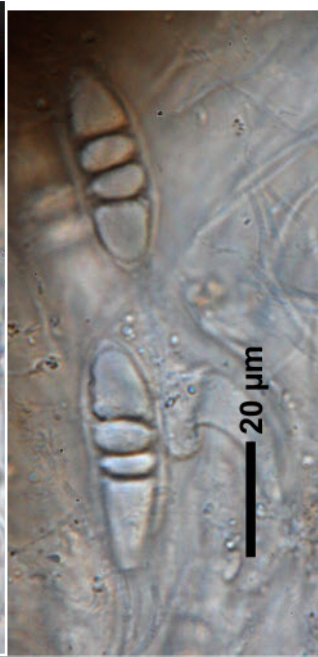
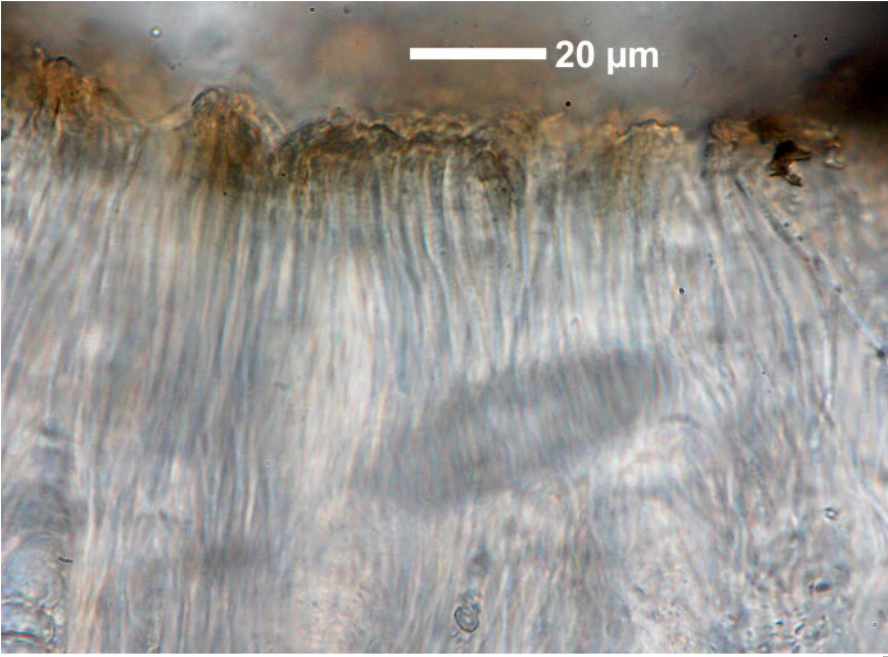
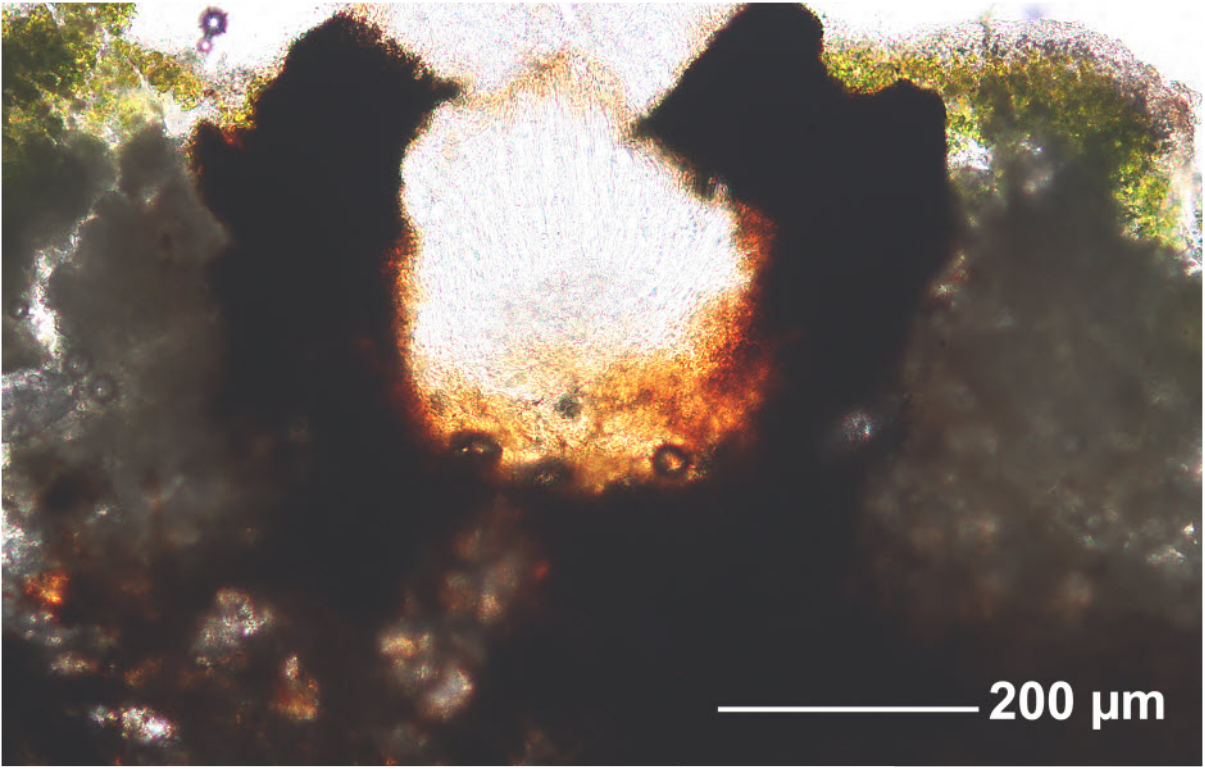


*Graphis streblocarpa* (Bél.) Nyl.

Lirellae immersed, margo complete-thin, completely carbonized. Hymenium not inspersed. Spores ripe muriform, J+ blue, 83-102 x 25 µm. Medulla K+ yellow>orange, P+ weak orange-yellow (stictic acid, section K+ yellow but without crystals)

[18638], Indien, Prov. Karnataka, Distr. Coorg (Madikeri), westl. von Virajpet, 12.19990° N, 75.66527° E, 1100 m, im Bergregenwald beim Kabbe Holyday Resort. Leg. F. Schumm & Frahm 02.11.2012, det. R. Lücking 2015 (von F. Schumm 2012 ursprünglich als *Graphis sarawakensis* Hale ex Lücking bestimmt)





*Graphis streblocarpa*