

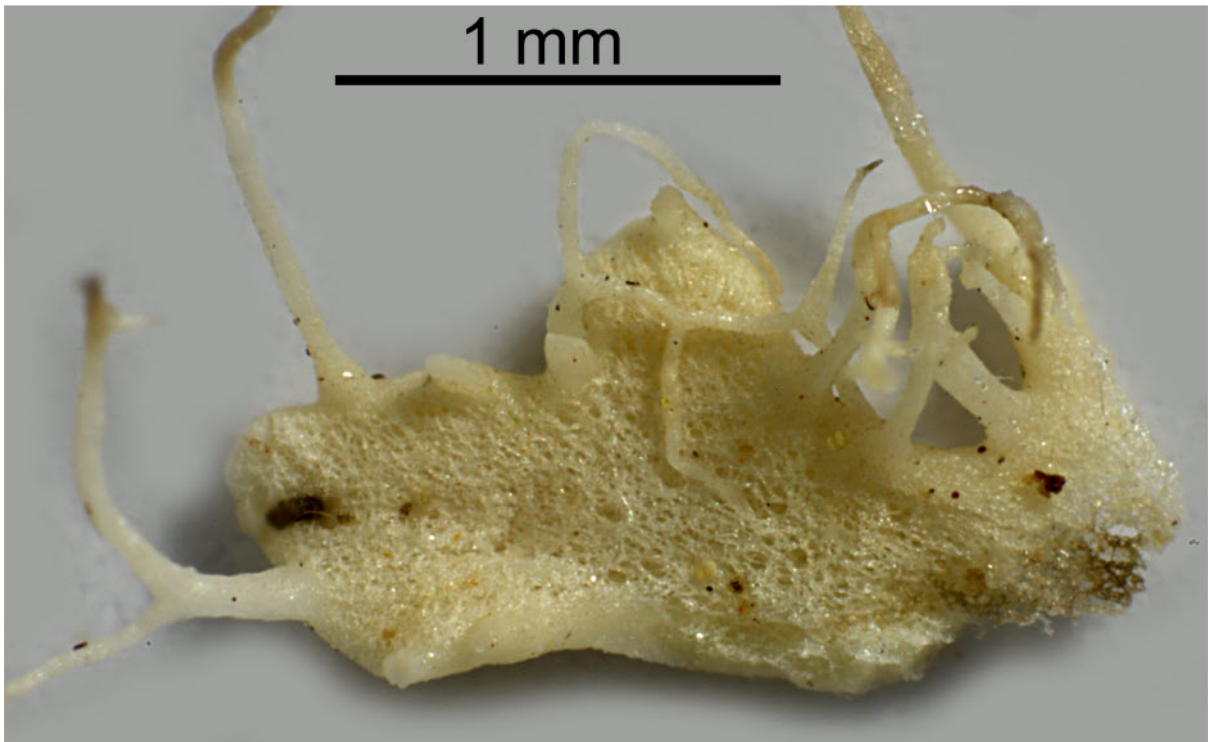
*Heterodermia archeri* Elix, TYPUS

Thallus similar to *Heterodermia galactophylla*. Lobes 2-3 mm wide at the tips and becoming paddle-shaped, apices  $\pm$  ascending. Margins of lobes soredate in labriform soralia. Lower surface white, ecorticate, arachnoid. Marginal-rhizines mostly white to pale brown.

[JAE-17595], Australia, Queensland, Cook district, Flaggy Creek, Black Mt. Road, 9 km NNW of Kuranda, along the rainforest margin, 16°47' S, 145°36' E, 420 m. Leg. J.A. Elix (17595) & H. Streimann, 7.7.1984. Lit. Australasian Lichenology 68: 15 (2011). **Chemistry:** atranorin, zeorin by HPTLC, anal. F. Schumm. According to J.A. Elix also with testacein and some terpenes, which could not be detected in this fragments.

Rem.: When K. Kalb visited me in 2015 he gave me some fragments of this sample, from which he had already made a TLC. So I could make a second acetone extraction. Unfortunately he did not loan me the type for some days to make pictures. So I was forced to make images from this fragments only if my HPTLC should be accompanied by lichen images.



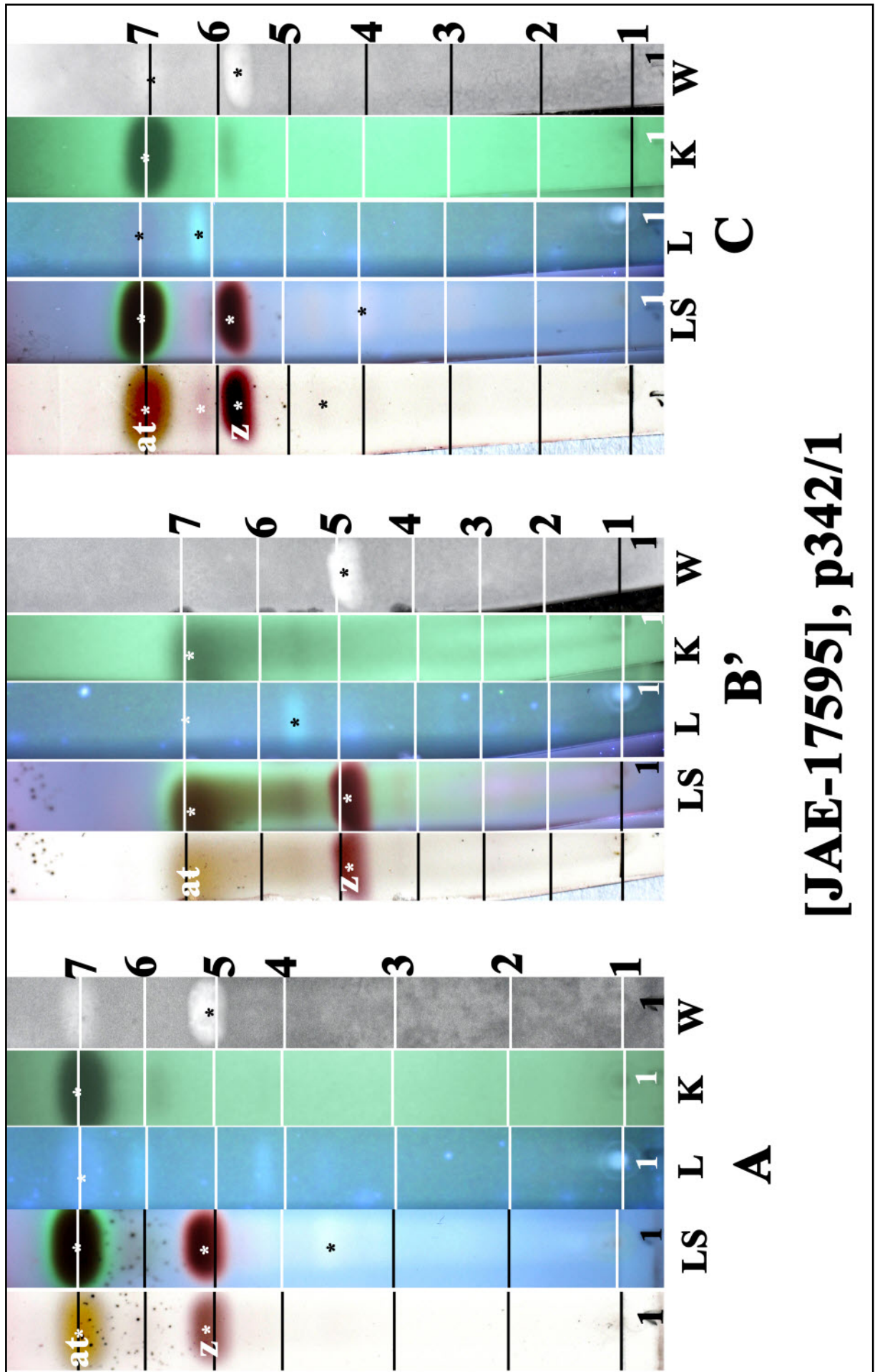


*Heterodermia archeri*



*Heterodermia archeri*





[JAE-17595], p342/1

at: atranorin, z: zeorin

*Heterodermia archeri*