

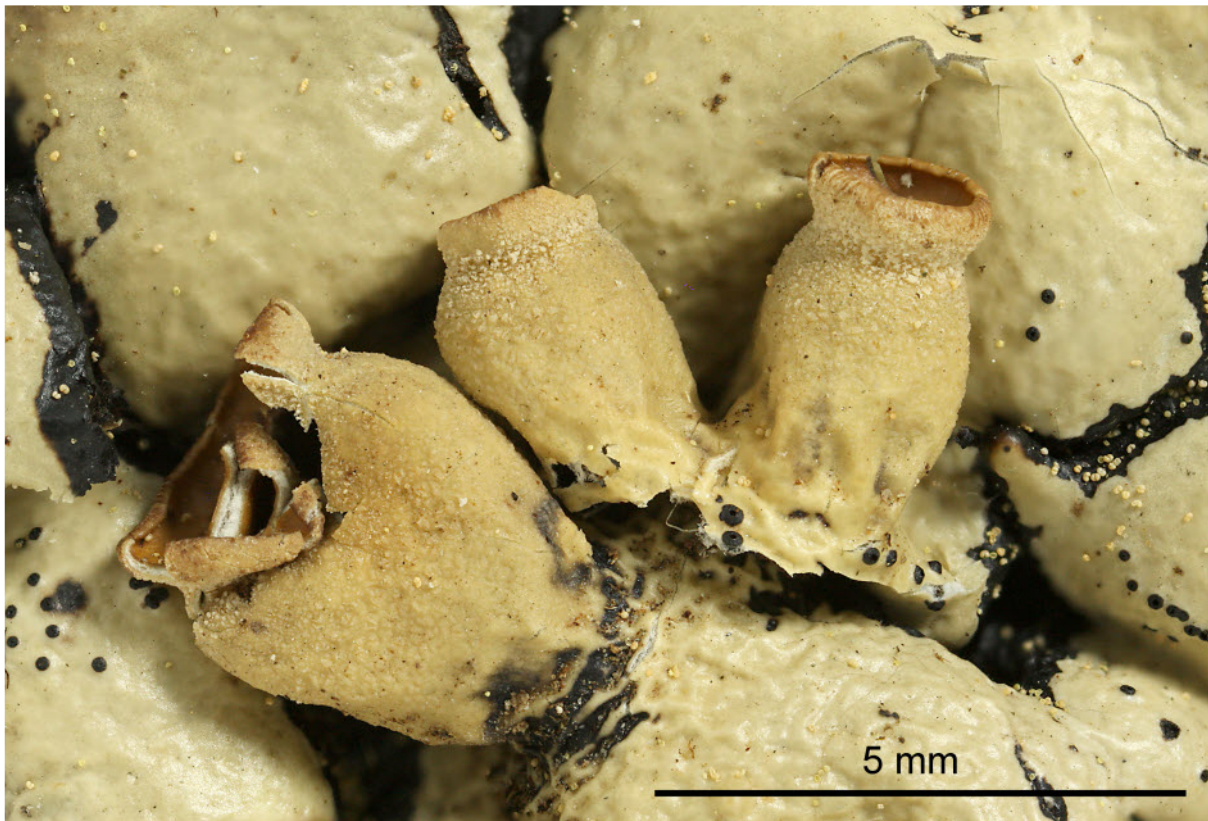
*Hypogymnia enteromorpha* (Ach.) Nyl.

Thallus grey. Lobes 3-6 mm wide, irregularly branched. Soredia and isidia absent. Medullary ceiling dark. Lower surface black. Chemistry: medulla K-, C-, KC+ pink, P+ red; protocetraric acid, pycnodalic acid, physodic acid, diffractaic acid. Corticol, NW America.

[9489], USA, Alaska, Haines. Leg. S.A. Harris 27. Juni 2000 (Nr. 2737), det. S.A. Harris.







*Hypogymnia enteromorpha*