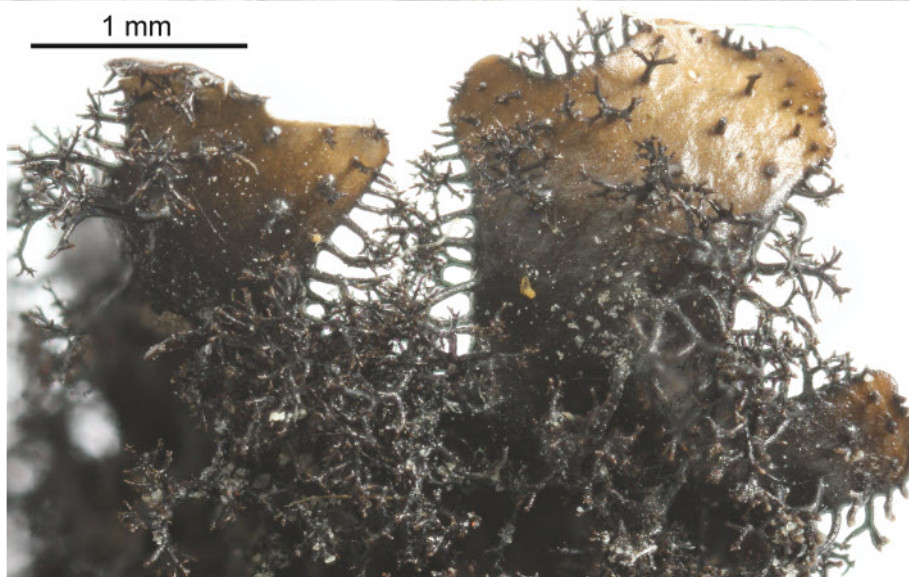
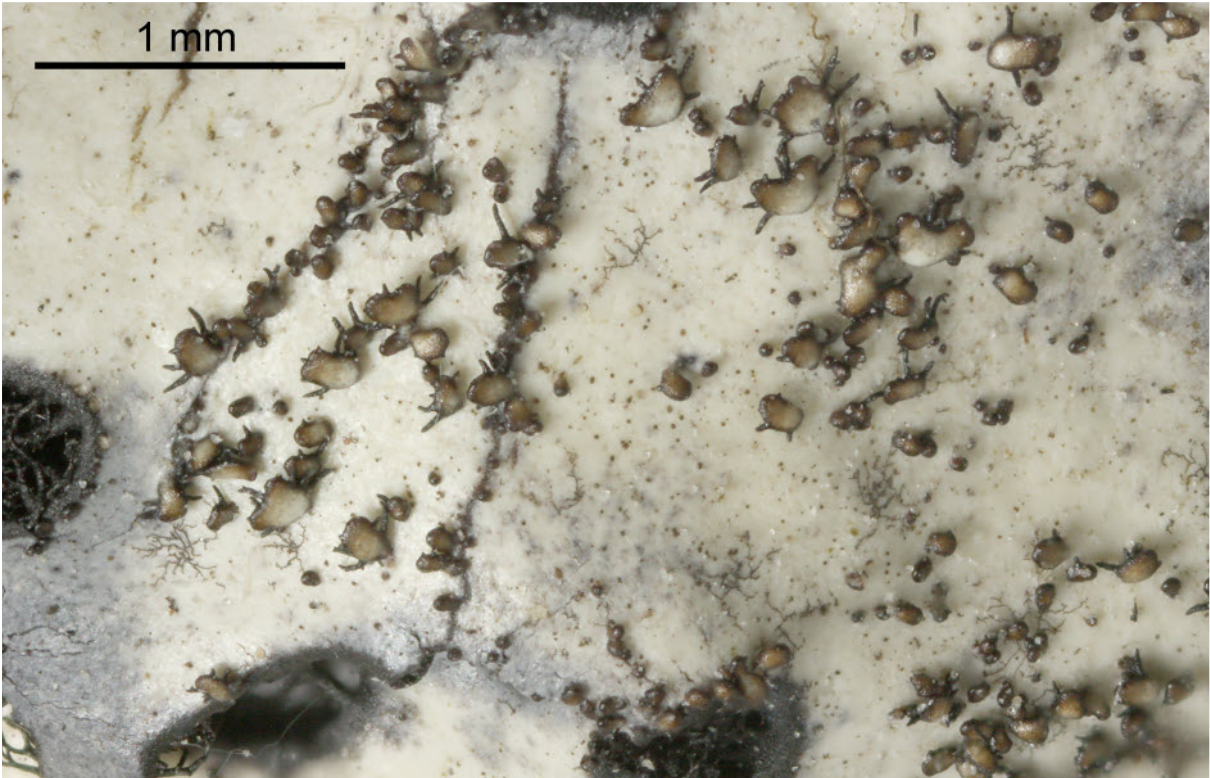
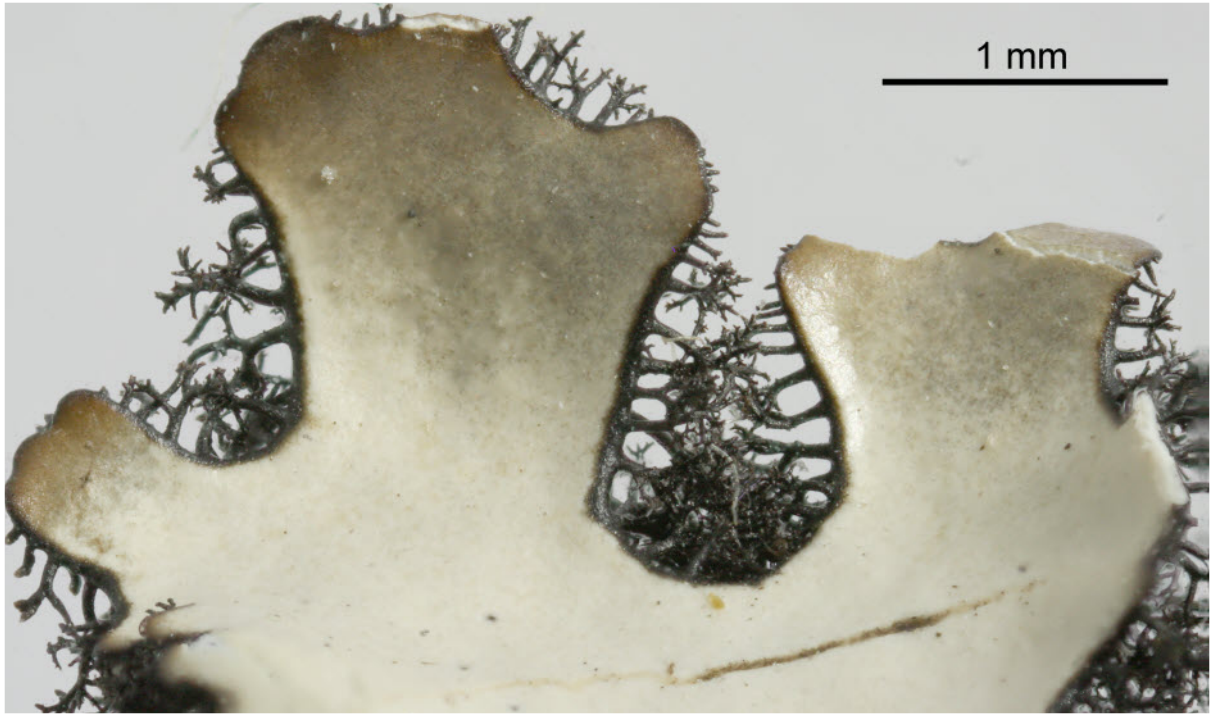


Hypotrachyna bogotensis (Vain.) Hale

Thallus gray, smooth, lacking soredia, isidiate to lobulate, 2-12 cm wide. Isidia laminal to marginal, lobulate. Lower surface black, peripherally brown. Rhizines peripherally abundant, 3-5 times dichotomously branched. Medulla white. Chemistry: cortex K⁺ yellow, C⁻, KC⁻, P⁺ yellow, UV⁻; medulla K⁻, C⁺ red, KC⁺red, P⁻; atranorin, evernic acid, lecanoric acid. On mossy branches and rocks in the mountains of Central America and the Andes.

[11956], S-America, Ecuador, Prov. Pichincha, Papallacta-Pass zwischen Quito und Baeza, Polylepis-Wald und offene Buschvegetation mit Felsen unterhalb (westlich) der Passhöhe, auf Polylepis-Ästen, 3950 m. Leg. Schäfer-Verwimp, Heinrichs, Wilson Yandún 22.08.2004, det. Schumm 20.02.2005. Ex Herb. Schäfer-Verwimp Nr. 24459.





Hypotrachyna bogotensis