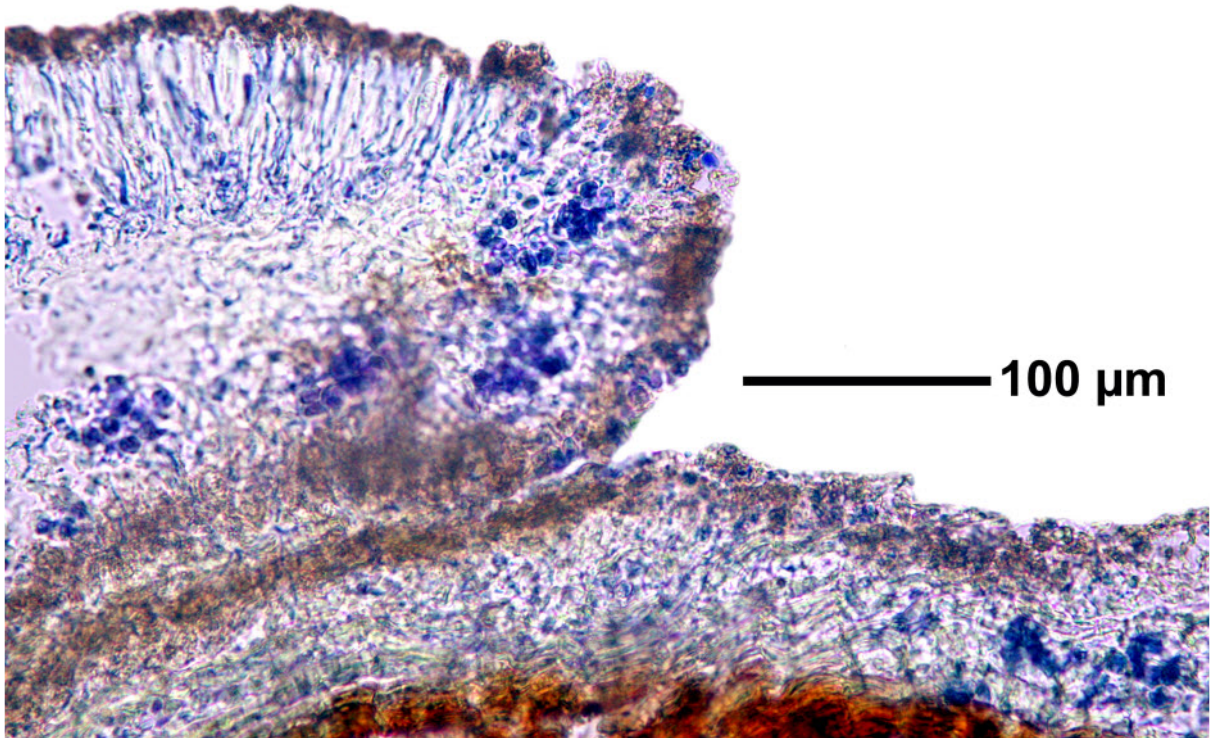
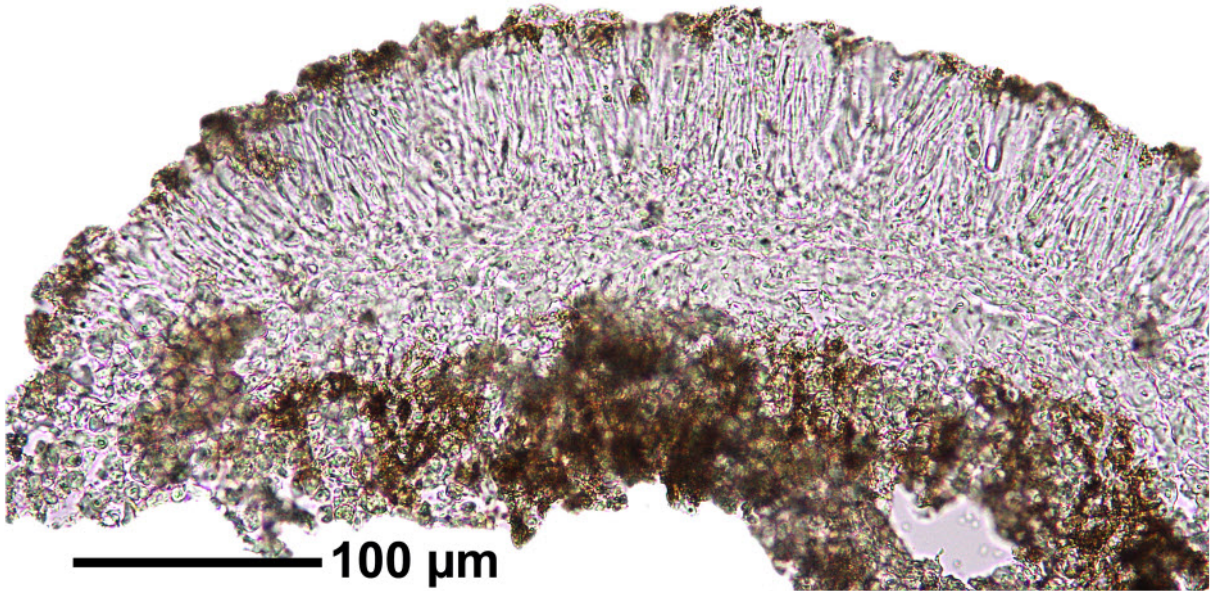


Lecanora albella (Pers.) Ach.

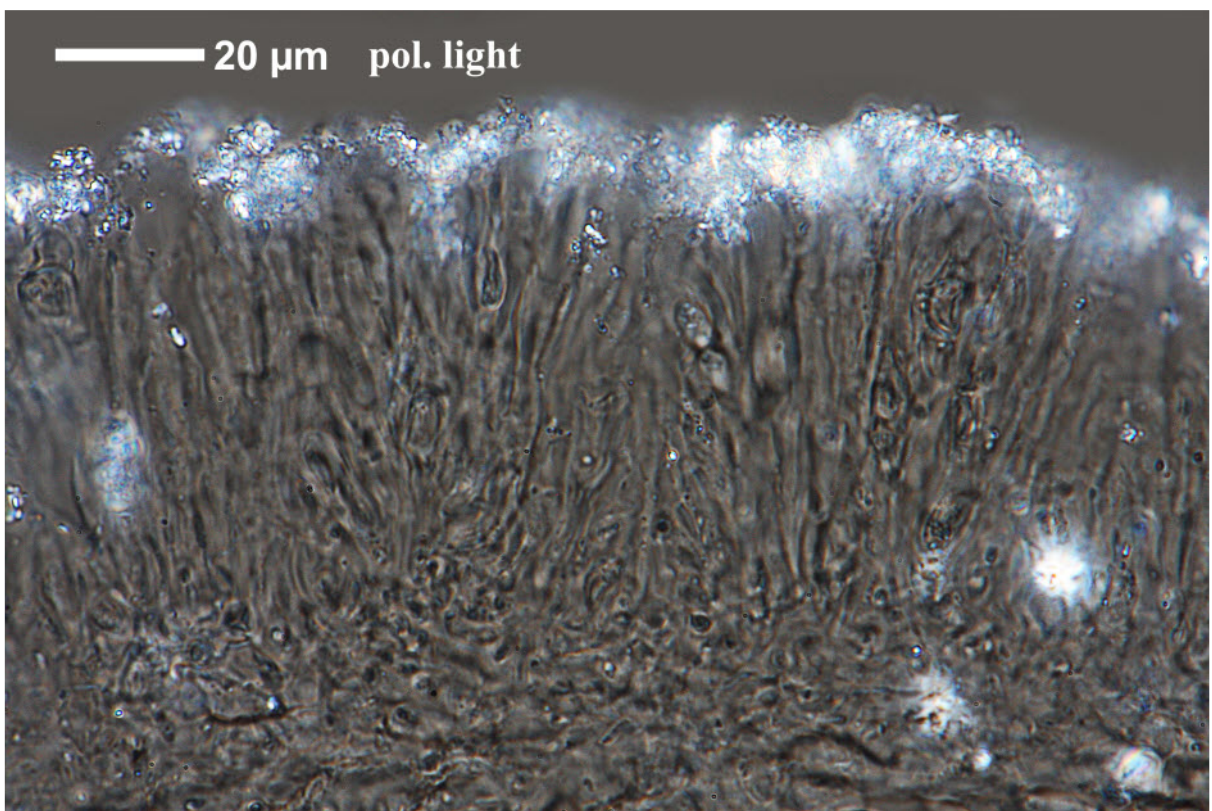
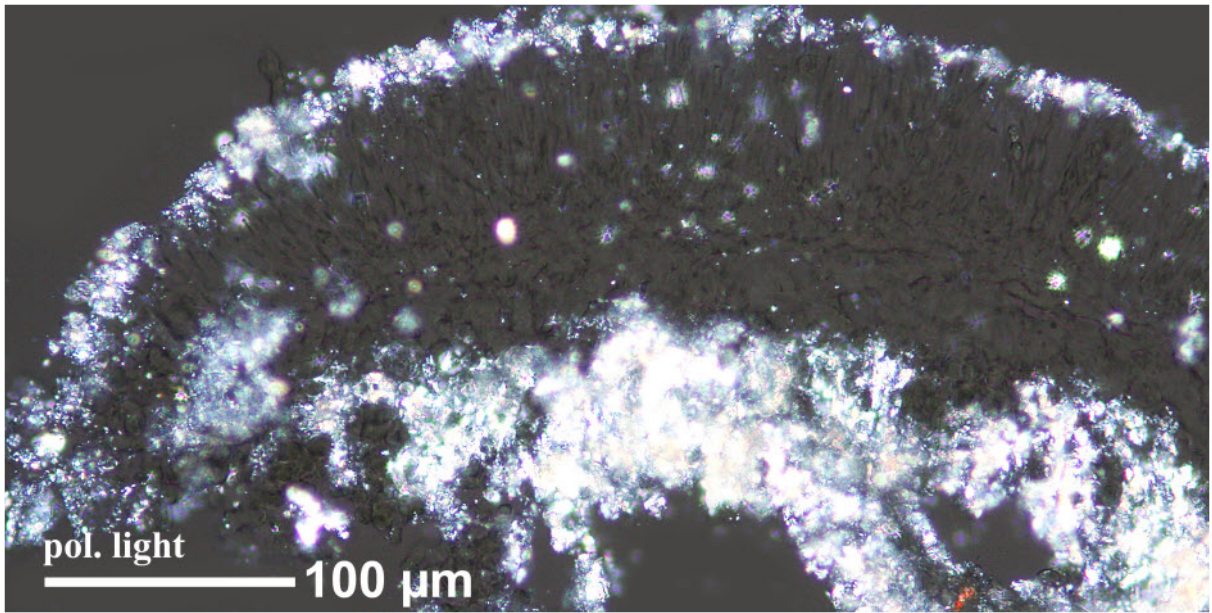
Apothecien 0.3-1.5 mm, weiß bereift (in polarisiertem Licht aufleuchtend). Sporen 1-zellig, hyalin, 8/Ascus, 9-10 x 5-6 μ m. Epithecium 20 μ m, körnig dunkel, bestehend aus stark verzw. Paraphysen. Hymenium 60 μ m, hell. Hypothecium 16 μ m, hell. Chemie: Protocetrarsäure, Atranorin; Thallus, Scheibe und Scheibenrand: K+ gelb, C-, P+ rotorange.

[11190], Portugal, Azoren, Sao Miguel: SO-Ufer des Lagoa Azul, 37°51.307' N, 25°47.060' W, 280 m, an Laubbaumrinden. Leg. Schumm 06.06.2003, conf. Aptroot 2010.

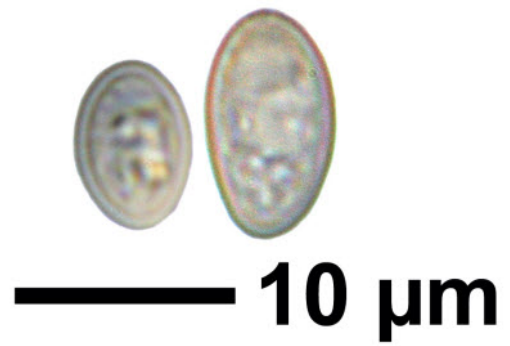
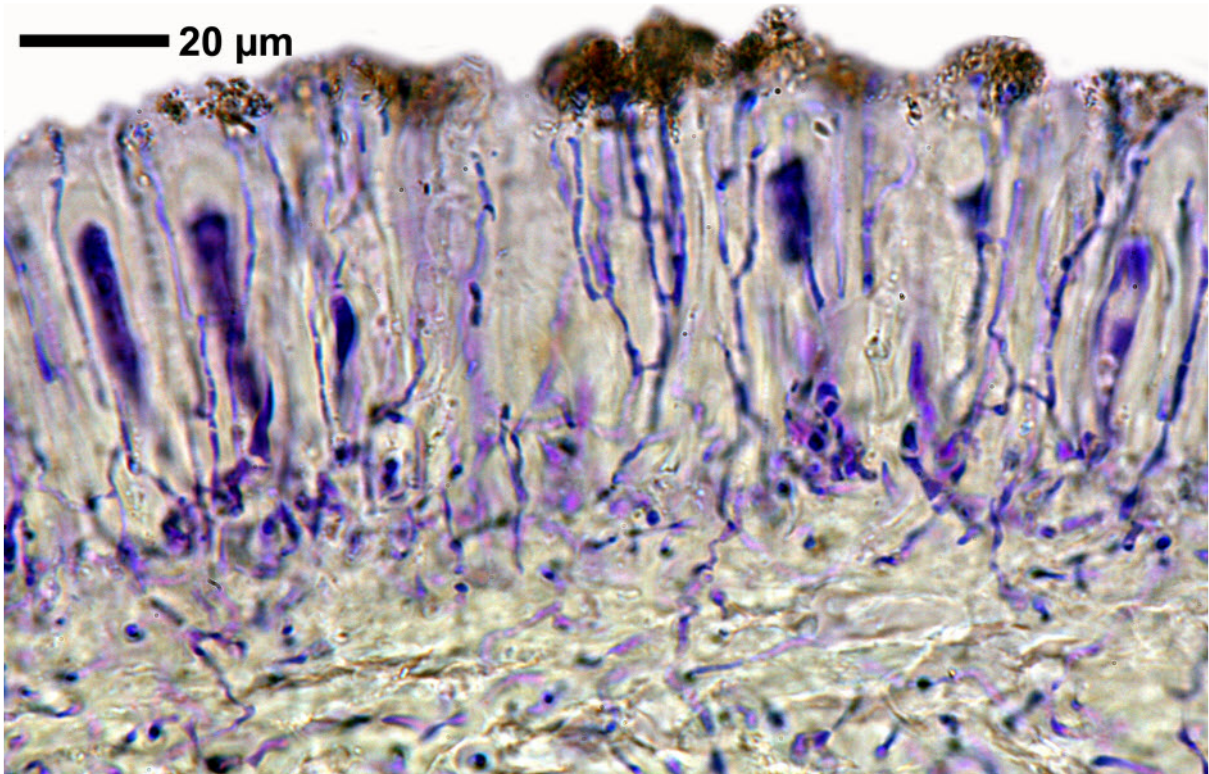
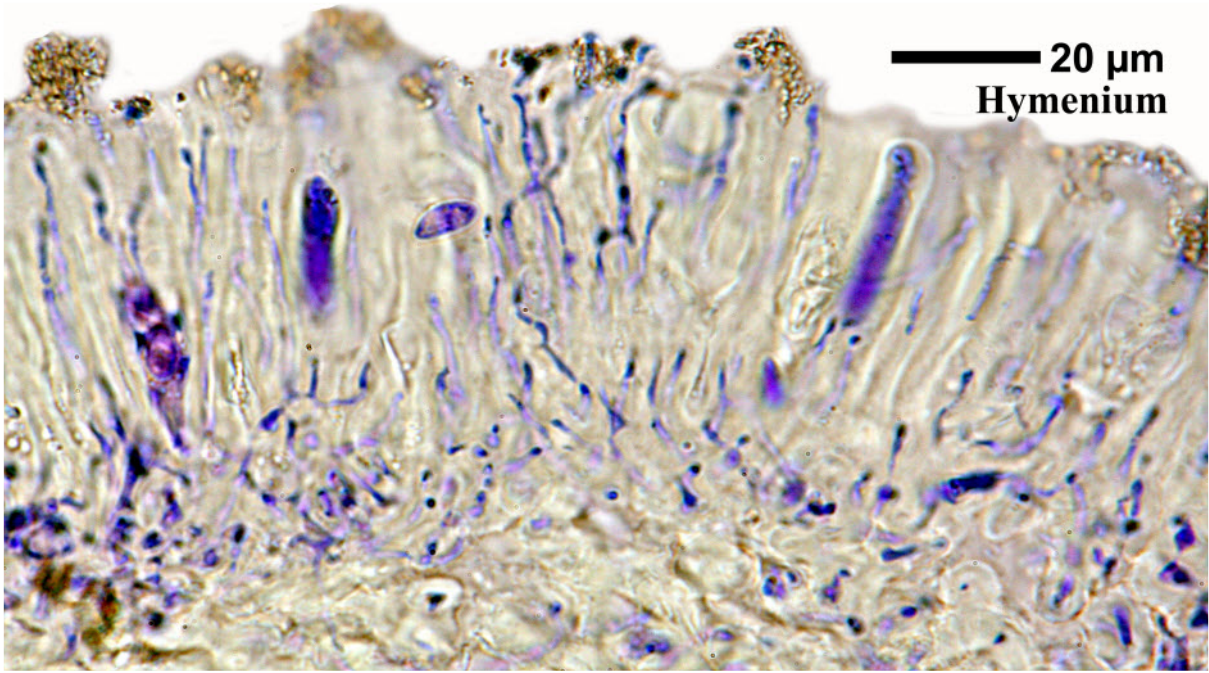




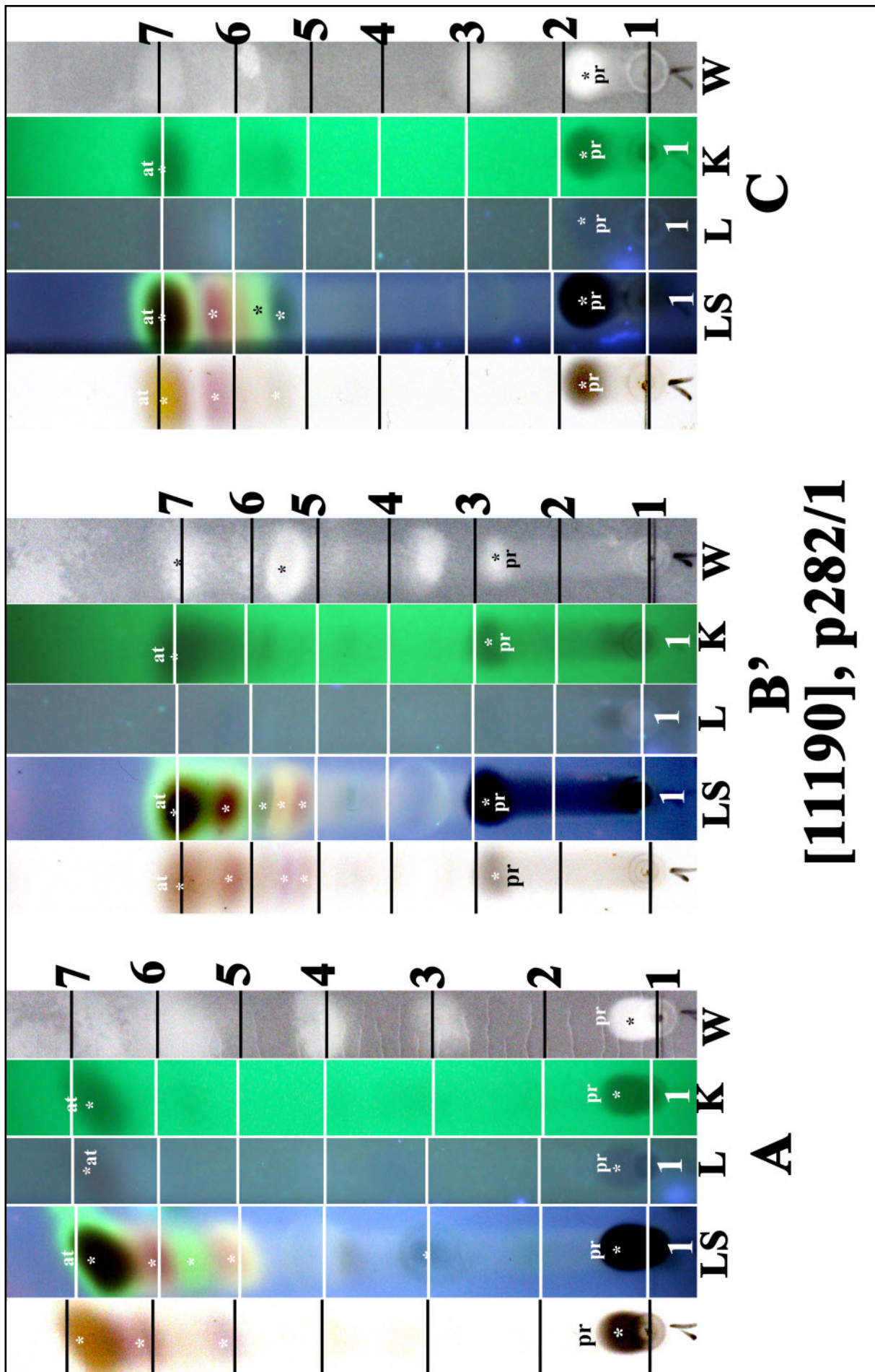
Lecanora albella



Lecanora albella



Lecanora albella



at: atranorin, pr: protocetraric acid

Lecanora albella