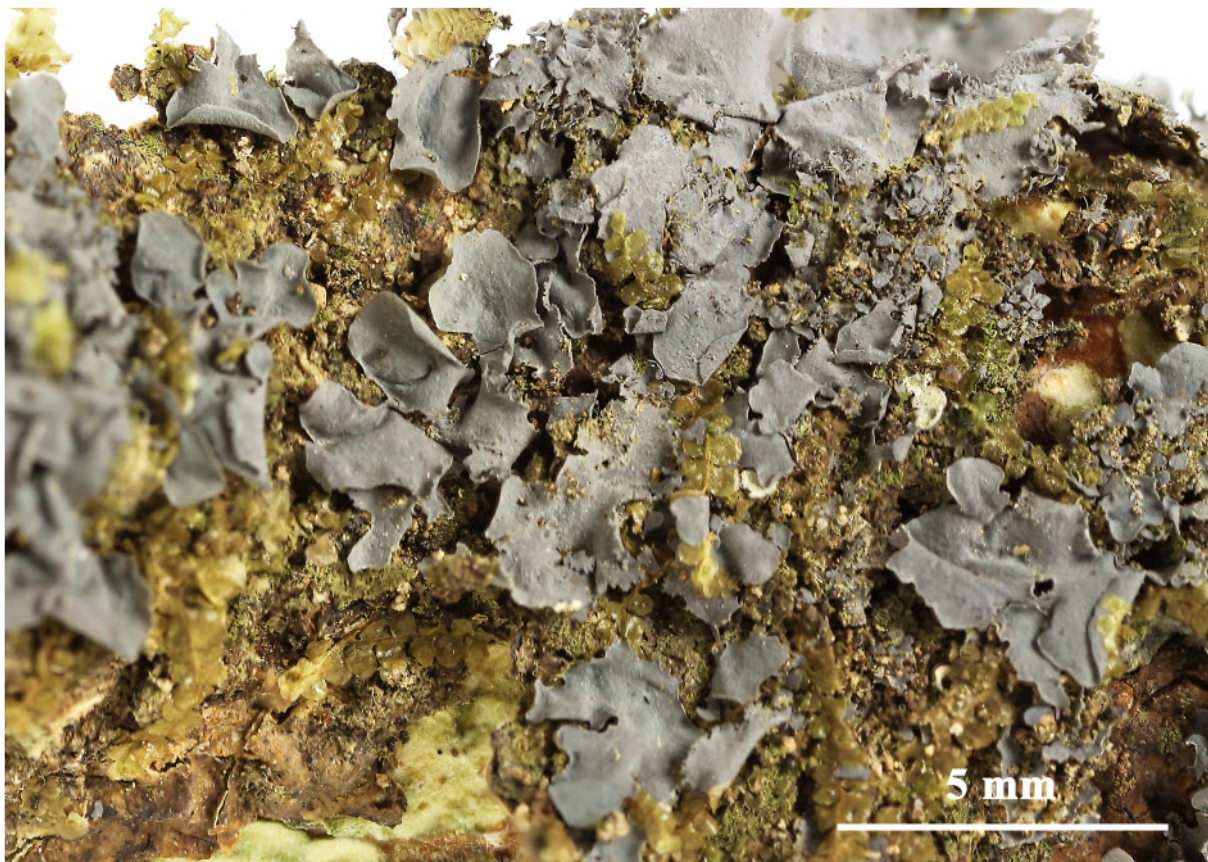


Leptogium cyanescens (Ach.) Körb., Syst. lich. germ. (Breslau): 420 (1855)
= *Collema cyanescens* (Ach.) Rabenh., Deutschl. Krypt.-Fl. (Leipzig) 2(1):
50 (1845)
= *Collema tremelloides* var. *cyanescens* Ach., Syn. meth. lich. (Lund): 326
(1814)
= *Leptogium cyanizum* Nyl., in Crombie, J. Linn. Soc., Bot. 16(2): 227 (1877)
= *Leptogium tremelloides* var. *cyanescens* (Ach.) Hepp, Syst. Verzeichn.
Indisch. Archipel. Gesammelt. Pflanzen: 5, fig. VII, 2 (1854)
= *Stephanophorus cyanizum* (Nyl.) Nyl., Acta Soc. Sci. fenn. 26(no. 10): 4
(1900)

[ABL48985], Brazil, Sena Madureira, Reserva extratevista Cazumbá-Iracema, Comunidade Cuidado, on tree bark in disturbed tropical rain forest. 09°07' S, 68°59' W, 150 m. Leg. A. Aptroot (no 48985), M. Cáceres & J. Cavalcante, 09.04.2019. Det. A. Aptroot. 2019.





Leptogium cyanescens