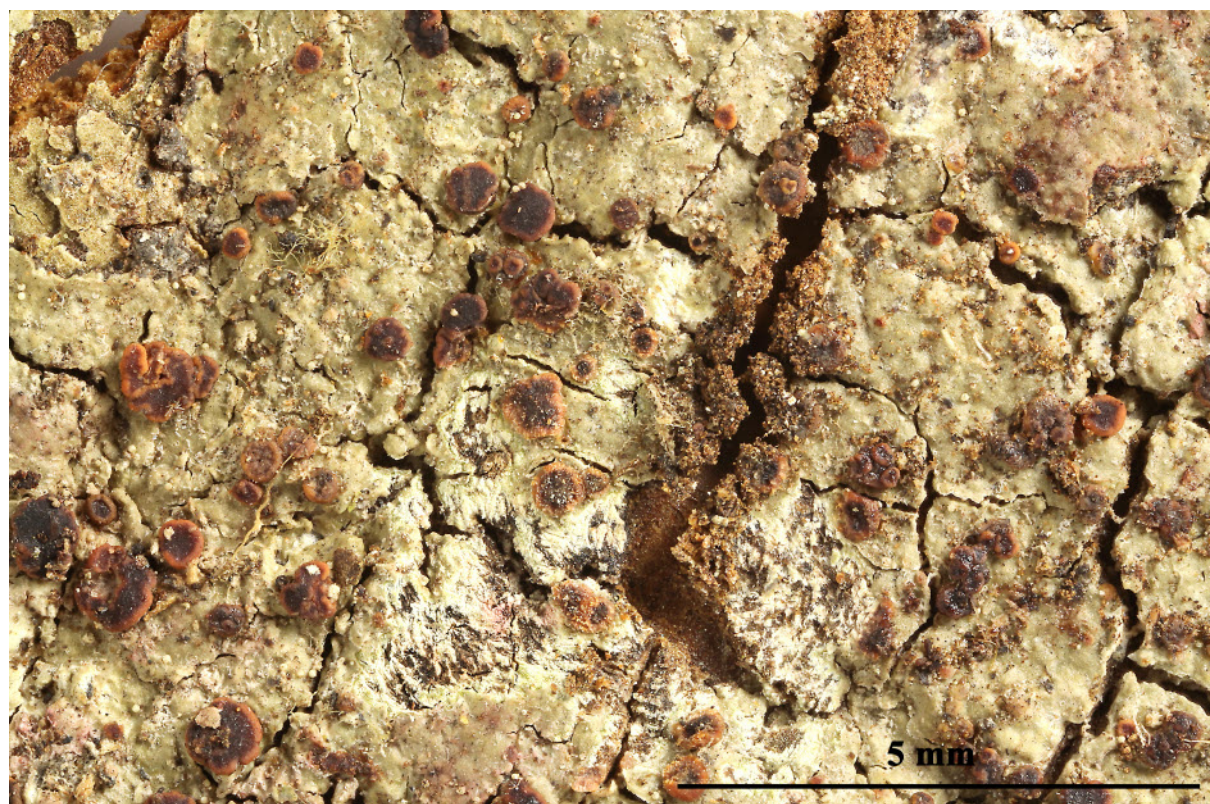


- Letrouitia vulpina* (Tuck.) Hafellner & Bellem., Nova Hedwigia 35(2 & 3): 281 (1982) [1981]  
 = *Heterothecium domingense* subsp. *vulpinum* (Tuck. ex Nyl.) Tuck., Syn. N. Amer. Lich. (Boston) 2: 57 (1888)  
 = *Heterothecium vulpinum* (Tuck.) Tuck., Syn. N. Amer. Lich. (Boston) 2: 57 (1888)  
 = *Heterothecium vulpinum* var. *glaucescens* Müll. Arg., Nuovo G. bot. ital. 23(3): 393 (1891)  
 = *Lecanora vulpina* (Tuck.) Nyl., Bull. Soc. linn. Normandie, sér. 2 3: 7 (1869)  
 = *Lecidea vulpina* Tuck., in Nylander, Annl. Sci. Nat., Bot., sér. 4 19: 354 (1863)  
 = *Lopadium vulpinum* (Tuck.) Zahlbr., Cat. Lich. Univers. 4: 316 (1926) [1927]  
 = *Lopadium vulpinum* var. *glaucescens* (Müll. Arg.) Zahlbr., Cat. Lich. Univers. 4: 316 (1926) [1927]  
 = *Miltidea vulpina* (Tuck.) Stirt., Trans. Proc. N.Z. Inst. 30: 386 (1898) [1897]  
 = *Sporopodium vulpinum* (Tuck.) Vain., Ann. Acad. Sci. fenn., Ser. A 15(no. 6): 88 (1921)

[ABL50049], Brazil, Sena Madureira, Reserva extratevista Cazumbá-Iracema, 2 km E of Núcleo Cazumbá. on tree bark in primary tropical forest. 09°07' S, 68°56' W, 170 m. Leg. A. Aptroot (no 50049), M. Cáceres & J. Cavalcante, 12.04.2019. Det. A. Aptroot. 2019.







*Letrouitia vulpina*