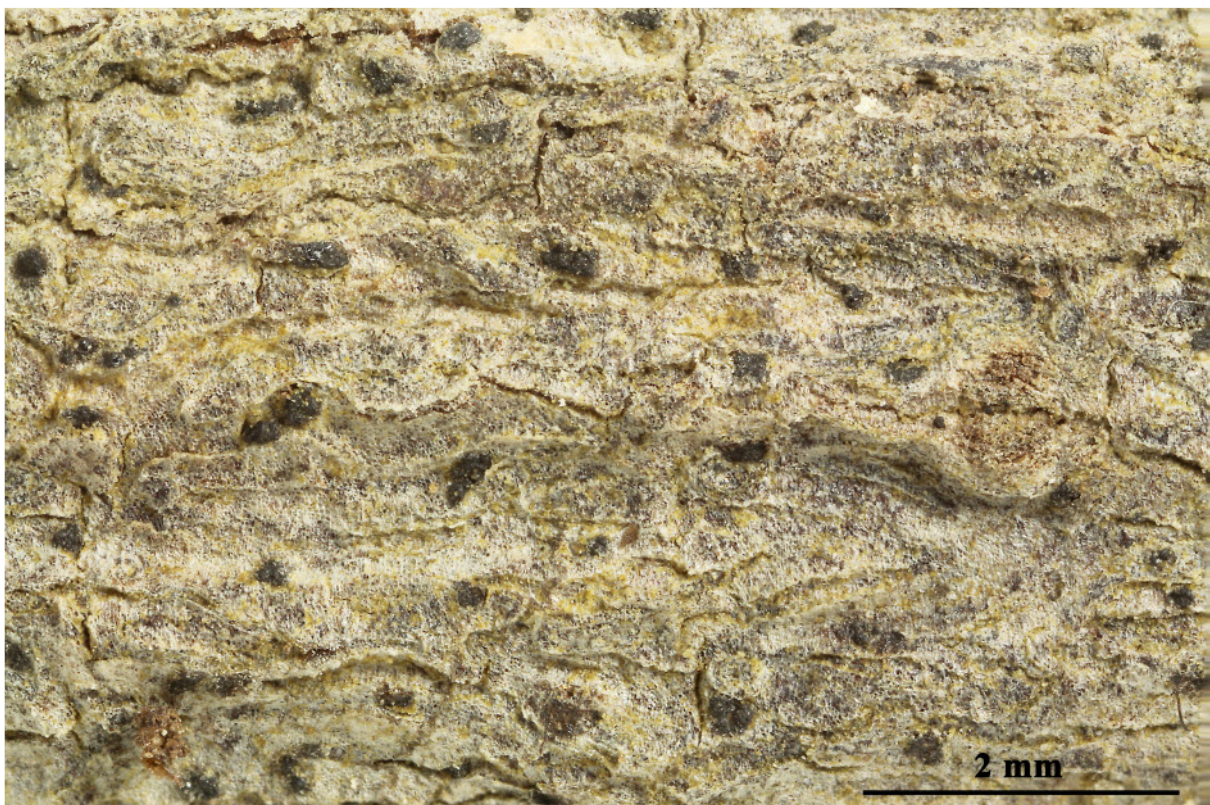


Mycoporum lacteum (Ach.) R.C. Harris, More Florida Lichens, Incl. 10 Cent Tour Pyrenol. (New York): 69 (1995)
= *Mycoporellum lacteum* (Ach.) Zahlbr., Cat. Lich. Univers. 1: 554 (1922)
= *Tomasellia lactea* (Ach.) R.C. Harris, in Hawksworth, James & Coppins, Lichenologist 12(1): 108 (1980)
= *Verrucaria stigmatella* var. *lactea* Ach., Lich. univ.: 277 (1810)

Thallus ecorticate, whitish, UV-. Perithecia solitary, or usually laterally grouped. Ostiole apical. Hamathecium oily, gelatinizing, filaments scarcely visible. Asci pyriform, with long tip. Ascospores 8/ascus, hyaline 1-septate, clavate, 20-26 x 6.5-8 μm , not ornamented, septum slightly submedian, upper cell somewhat wider than lower cell. Conidiomata absent.

[ISE17846], Brazil, Santa Catarina, São Francisco do Sul, Parque Estadual do Acaraí. In restinga vegetation on tree. 26°19'14" S, 48°33'13" W, 10 m. Leg. M. Cáceres & A. Aptroot (no 17846), 7.10.2015, det. A. Aptroot, 2015.





Mycoporum lacteum

10 μm



10 μm



10 μm



10 μm

Mycoporum lacteum