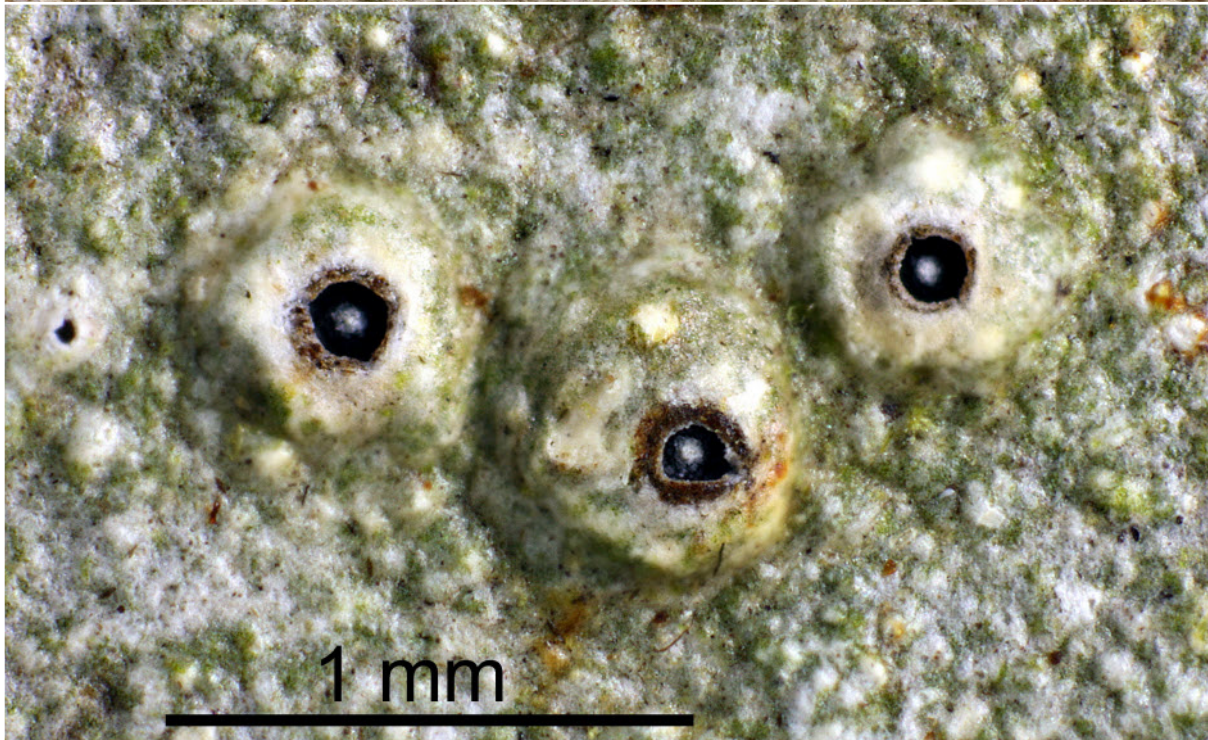
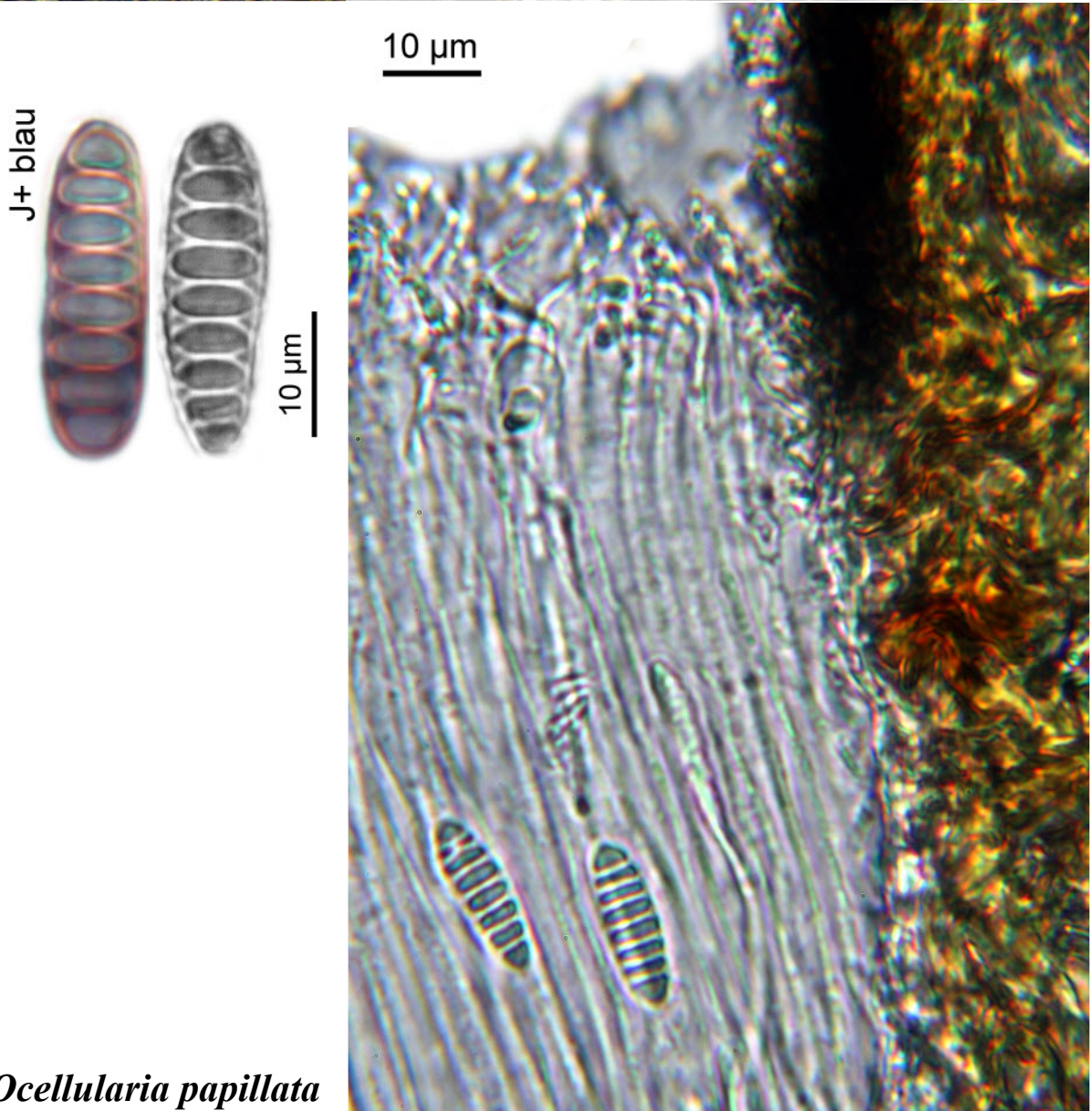
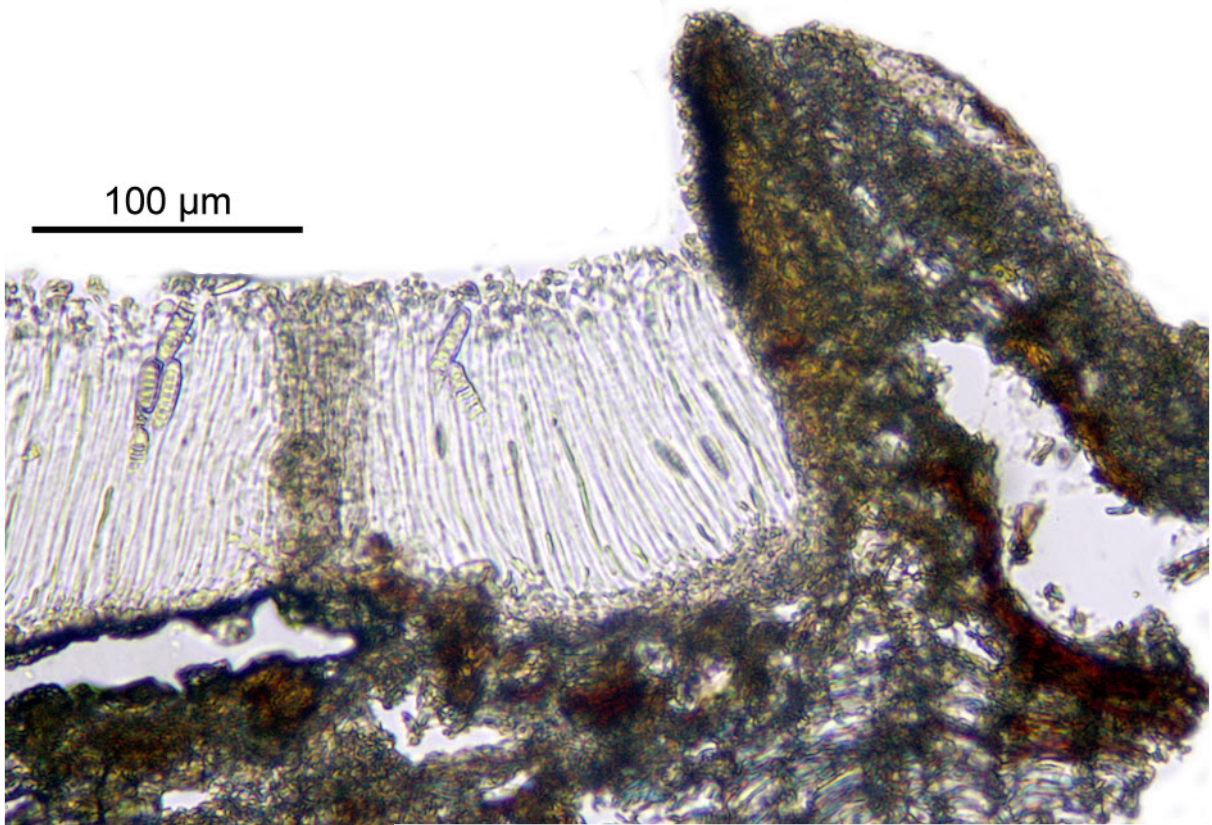


Ocellularia papillata (Leight.) Zahlbr.

Spores 17-38 x 7-8 μm , 7-9 septate, loculae lense-shaped, 8/ascus, I+ blue. Apothecia often with a columella. Thallus P-. Pantropical.

[14430], Seychellen, Praslin, bei Zimbabwe; 4°18.420' S, 55°42.358' E, ca. 300 m. Leg. Schumm & Frahm 29.09.2008, det. Schumm test. Apt-root 2008





Ocellularia papillata