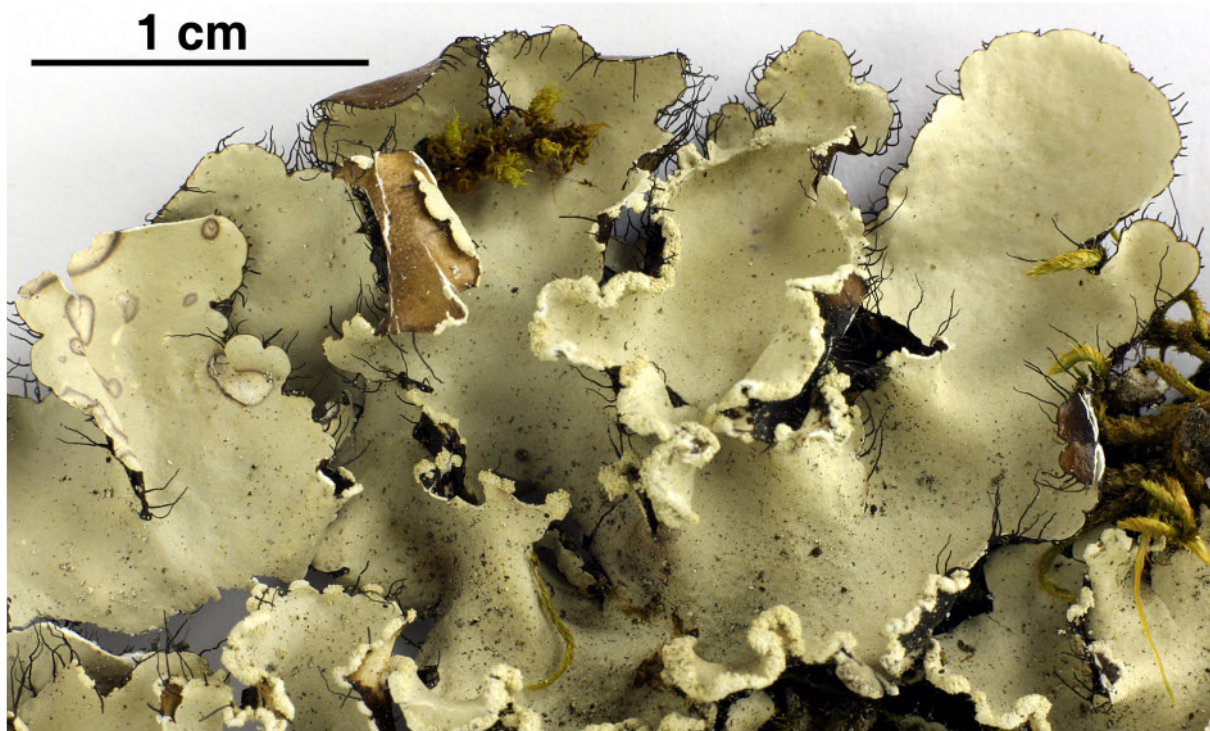
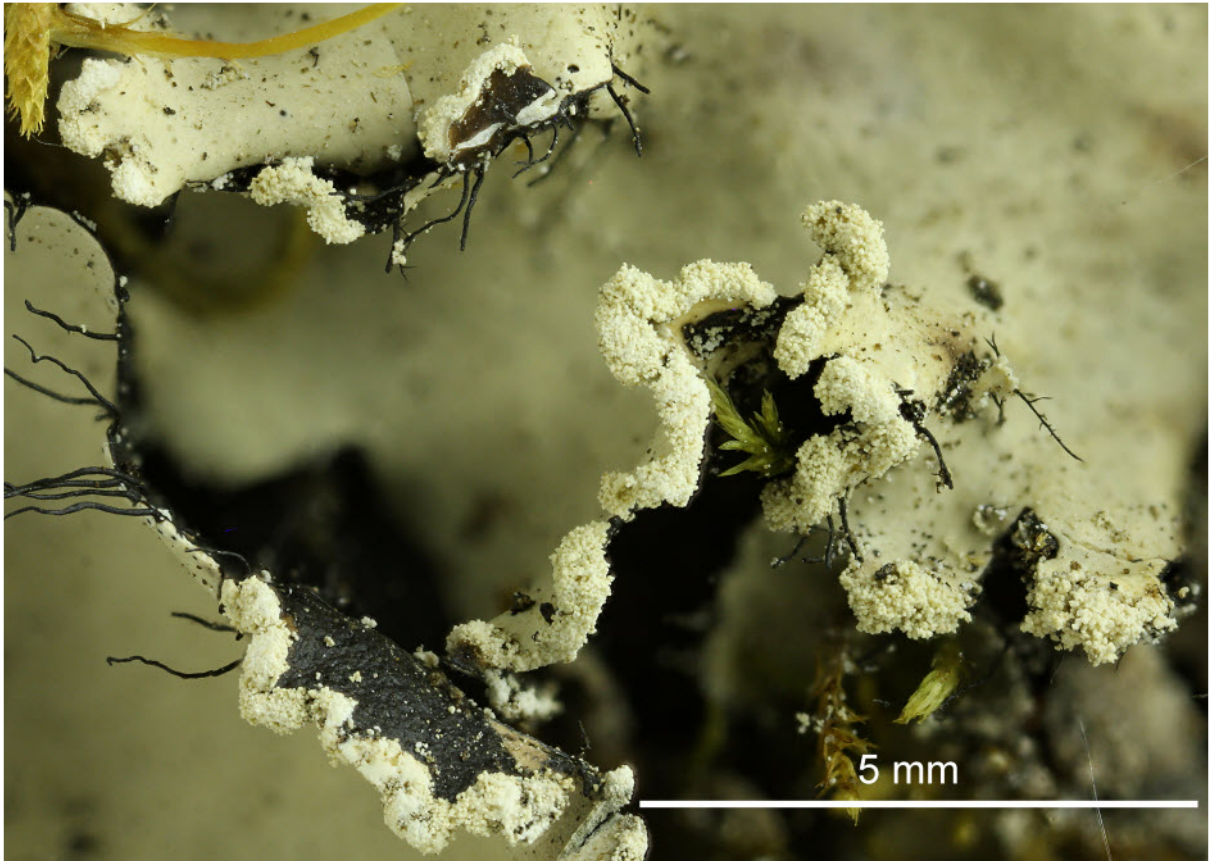
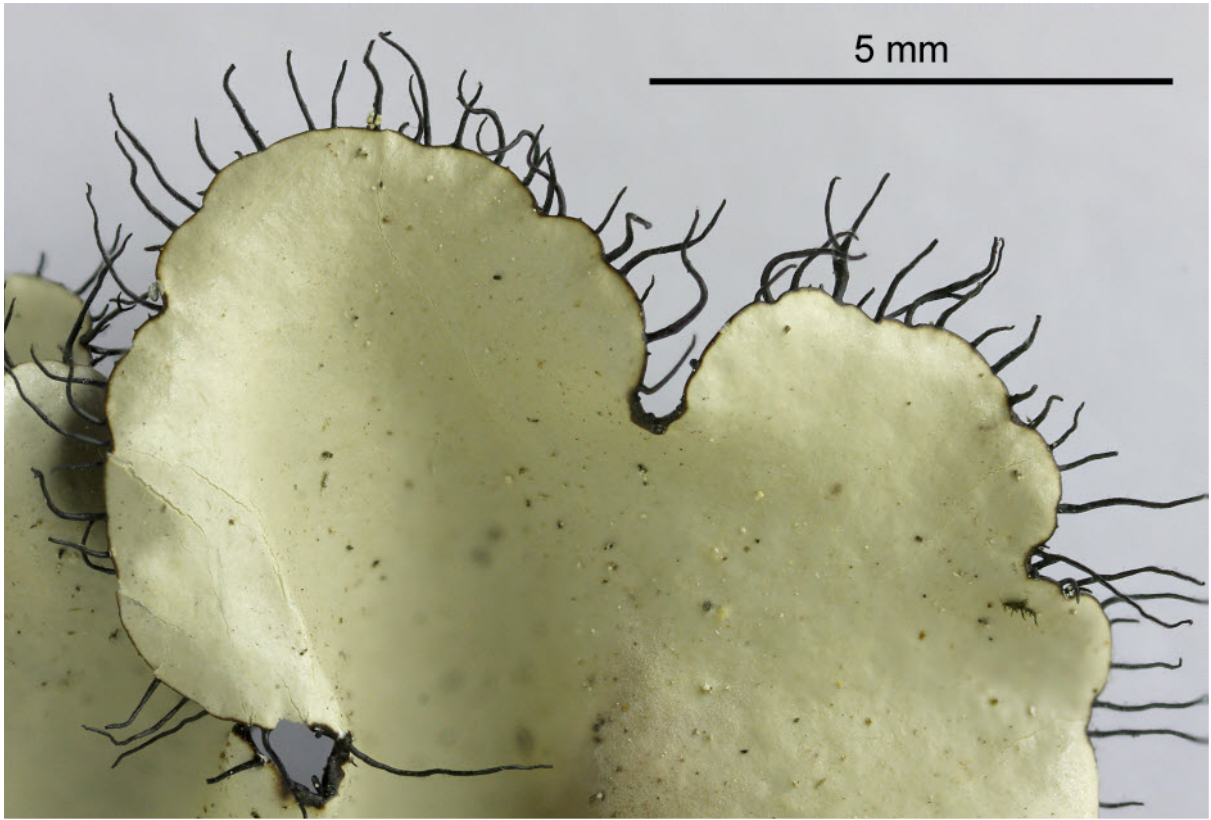


*Parmotrema cooperi* (J.Steiner & Zahlbr.) Sérus.

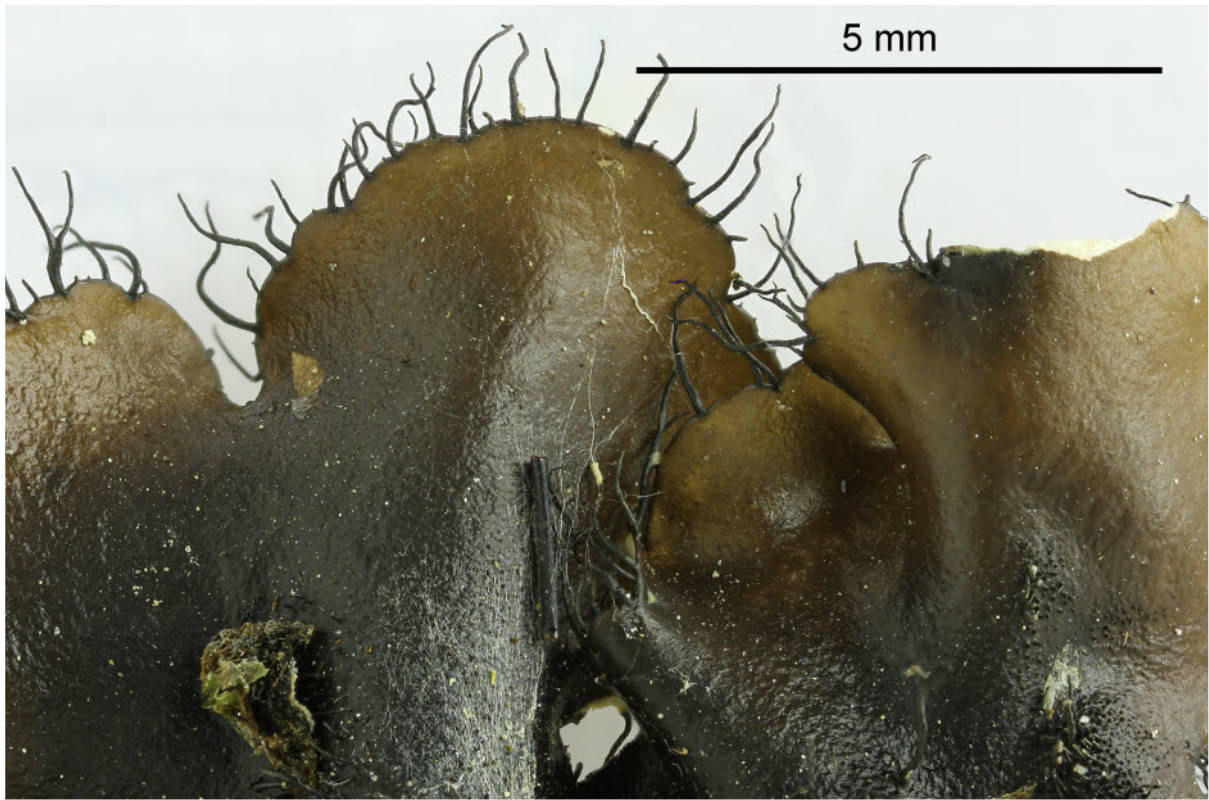
Thallus ciliate, upper surface grey, soralia marginal to submarginal, soredia granular, lower surface centrally black. Medulla white, K-, C+ red, KC+ red, P-. Lecanoric acid, atranorin.

[5885], Philippinen, Mindanao, Provinc Cotabato, bei Ilomavis an der Straße nach Kidapawan, 07°02.069' N, 125°11.367' E, 730 m, an Cocos-Palme. Leg. Schumm 07.08.1999, det J.A. Elix. Dupl. in CANB.





*Parmotrema cooperi*



*Parmotrema cooperi*