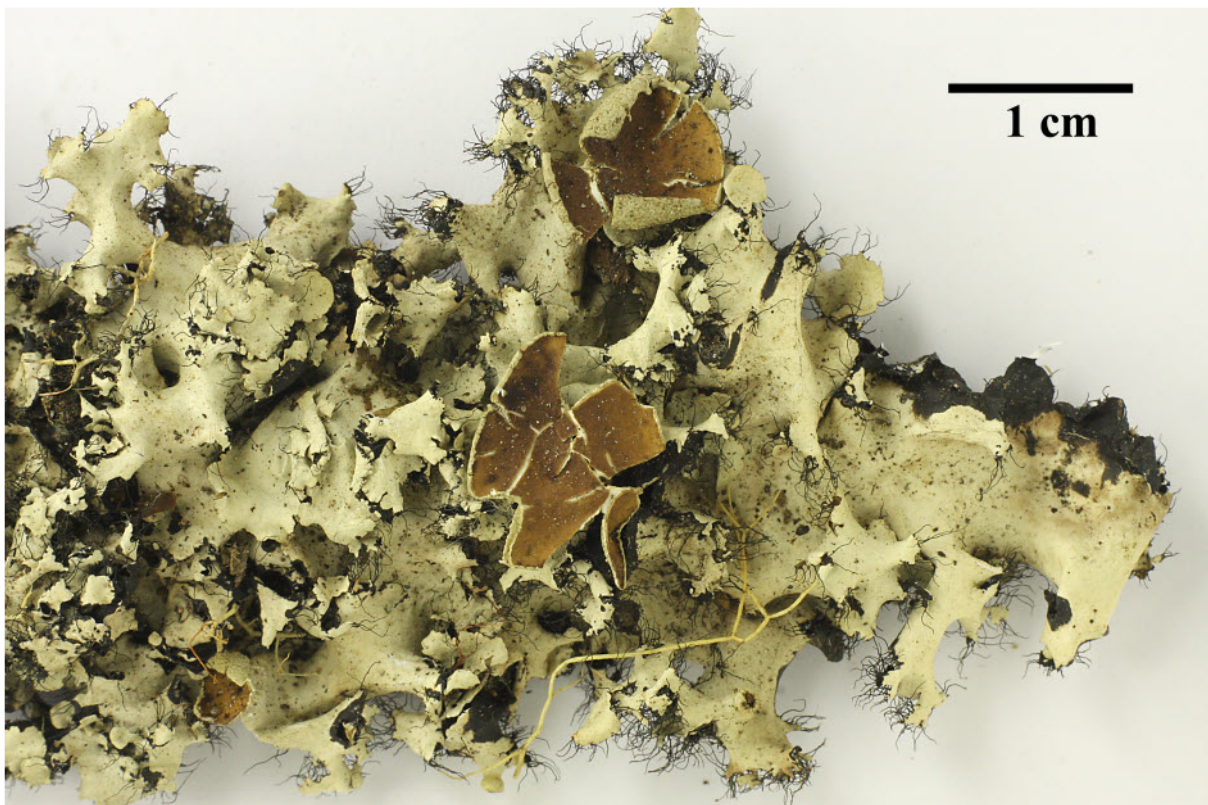
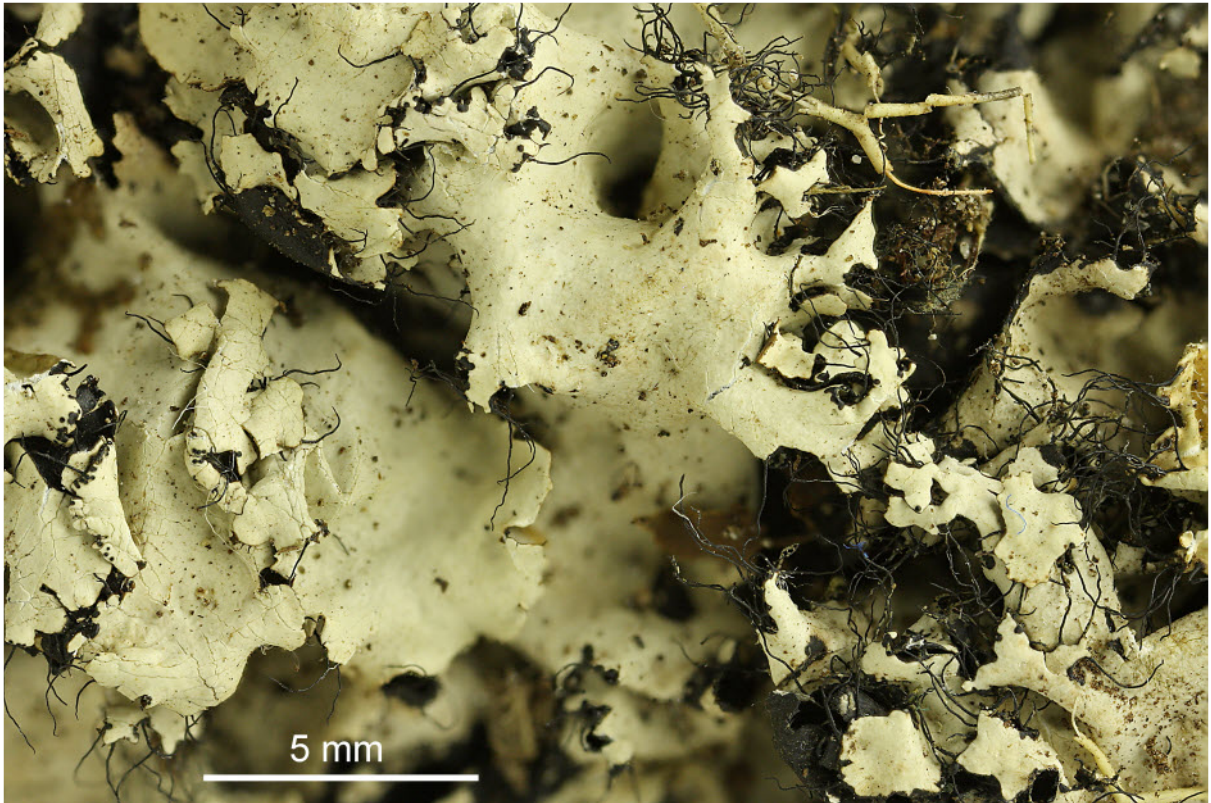


*Parmotrema corniculans* (Nyl.) Hale

Thallus grey, lobes 10-13 mm wide, ciliate, margins more or less dentate-laciniate with age. Soredia and isidia lacking. Lower side black and sparsely rhizinate, dark brown to brown. Chemistry: Thallus K+ yellow; medulla K-, KC+ reddish orange, C-, P-. Atranorin (minor), alectoronic acid (major),  $\alpha$ -collatolic acid (major), dehydroalectoronic acid (minor), dehydro- $\alpha$ -collatolic acid (minor).

[6044], Philippinen, Mindanao, Provinz Cotabato, Mt. Apo, tropischer Bergregenwald zwischen Marbel-River-Campsite und Lake Venado, ca. 07°00.165'-07°00.181' N, 125°14.767'-125°16.166' E, 2000 m. Leg. Schumm 10.08.1999, det. Elix 22.06.2000.





*Parmotrema corniculans*