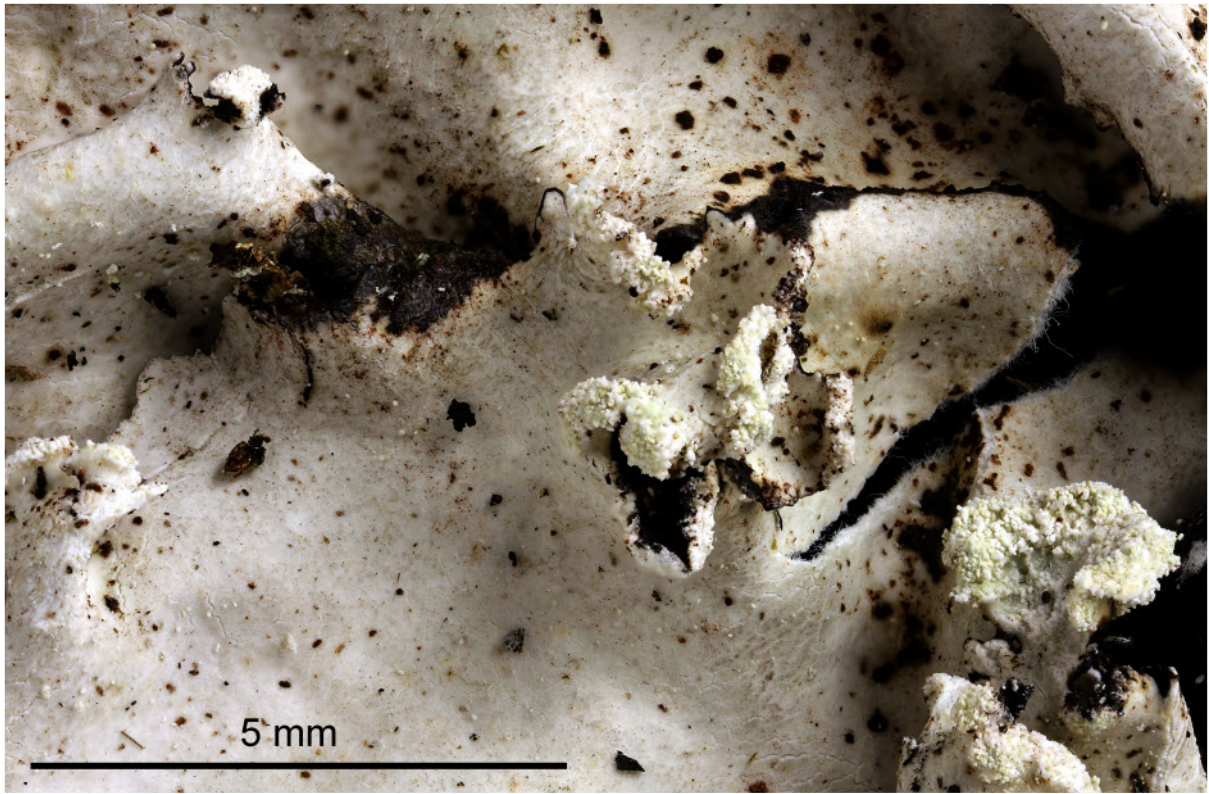


*Parmotrema cristiferum* (Taylor) Hale

Thallus grey-white, emaculate, without (or very seldom) cilia. Under-side black, with a brown, erhizinate, 0.5 mm wide margin. Without Isidia. Soralia mostly marginal, small. Chemistry: cortex K+ yellow; medulla K+yellow>red, C-, P+ orange; atranorin, salazinic acid, consalazinic acid. Pantropical. Similar to *Parmotrema stuppeum* which has more cilia.

[14460], Seychelles, Praslin, Nationalpark Sentier Glacier Noire, 4°19.916' S, 55°44.465' E, ca. 200-320 m. Leg. Schumm & Frahm 30.09.2008 (9), det. Schumm test Aptroot 2008.





*Parmotrema cristiferum*