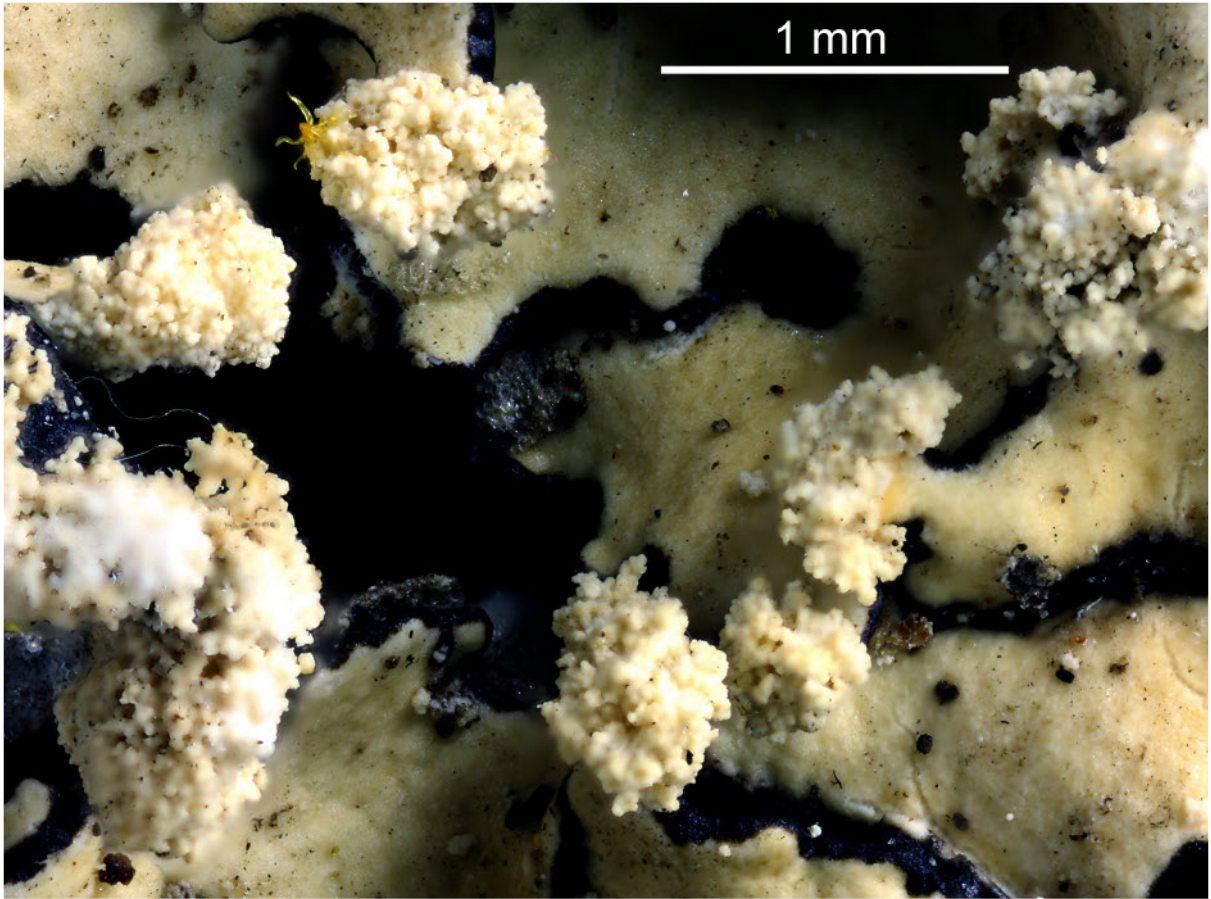


*Parmotrema gardneri* (C.W.Dodge) Sérus.

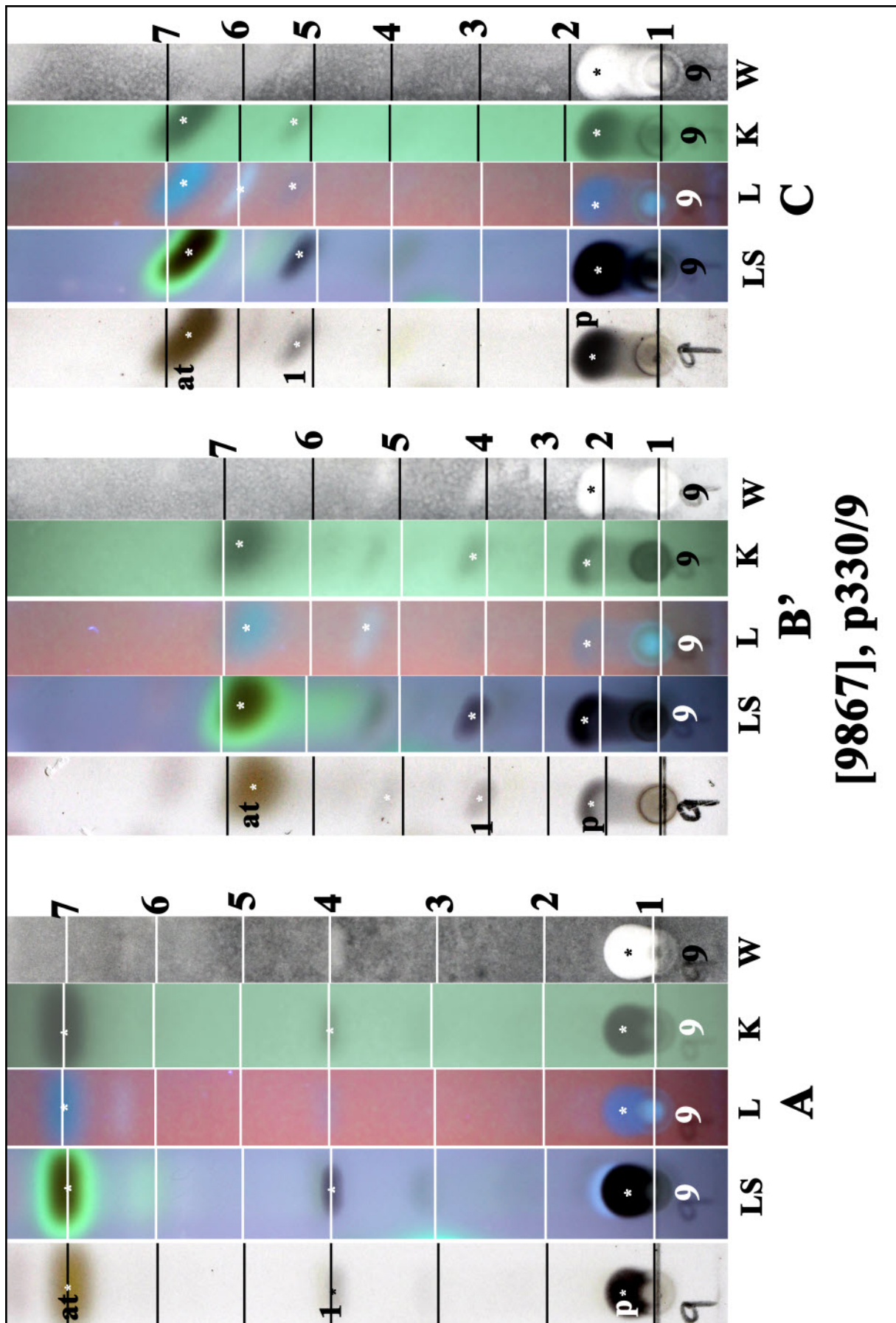
Upper surface pale grey, dull, emaculate, lacking isidia. Lobes eciliate or rarely sparingly ciliate. Soralia marginal to submarginal. Medulla white. Chemistry: upper cortex K+ yellow; medulla K+ dingy yellow the brown, C-, P+ orange-red; atranorin, chloroatranorin, protocetraric acid (major).

[9867], Australia, Queensland, 12 km S of Forrest Beach, 15 km SE of Ingham, 18°42' S, 146°18' E, 2 m. *Acacia-Alphitonia* dominated re-growth, on *Alphitonia*. Leg. J.A. Elix (15973) & H. Streimann 22.06.1984, det. J.A. Elix.





*Parmotrema gardneri*



[9867], p330/9

at: atranorin, p: protocetraric acid, 1: virensic acid, spots in solvents B' and C are deformed as margin effect of the HPTLC-plates

*Parmotrema gardneri*