

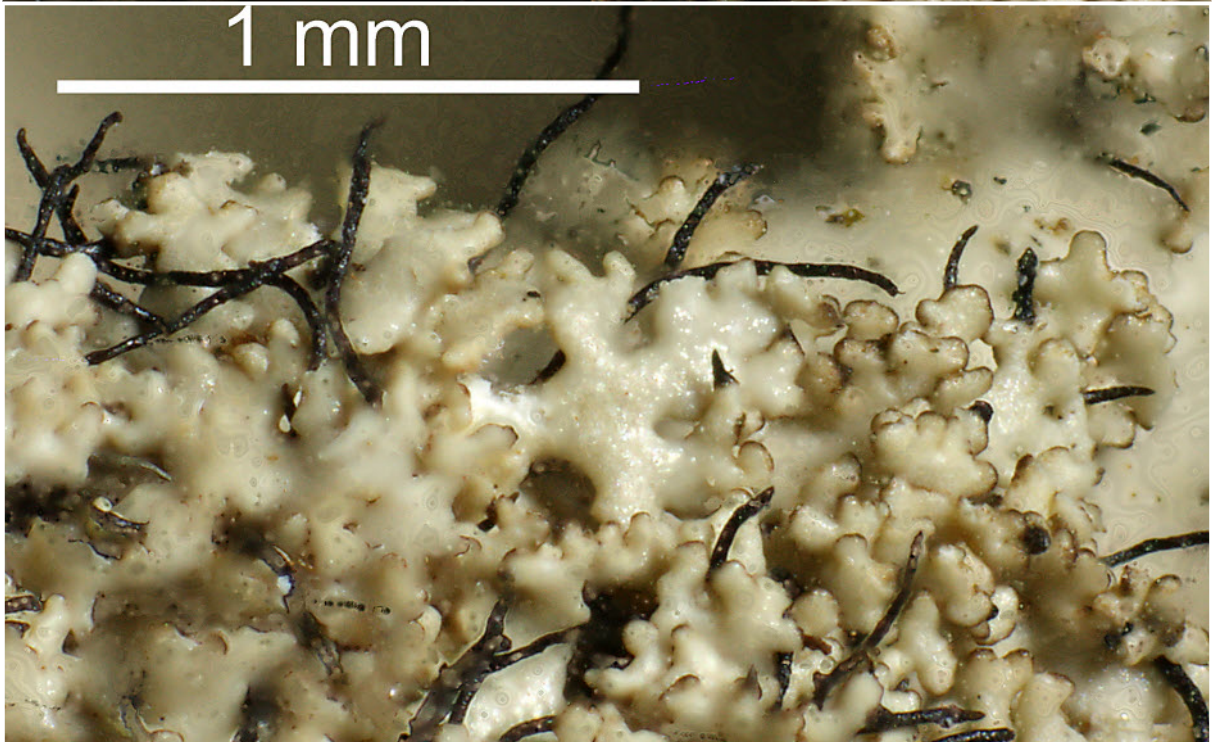
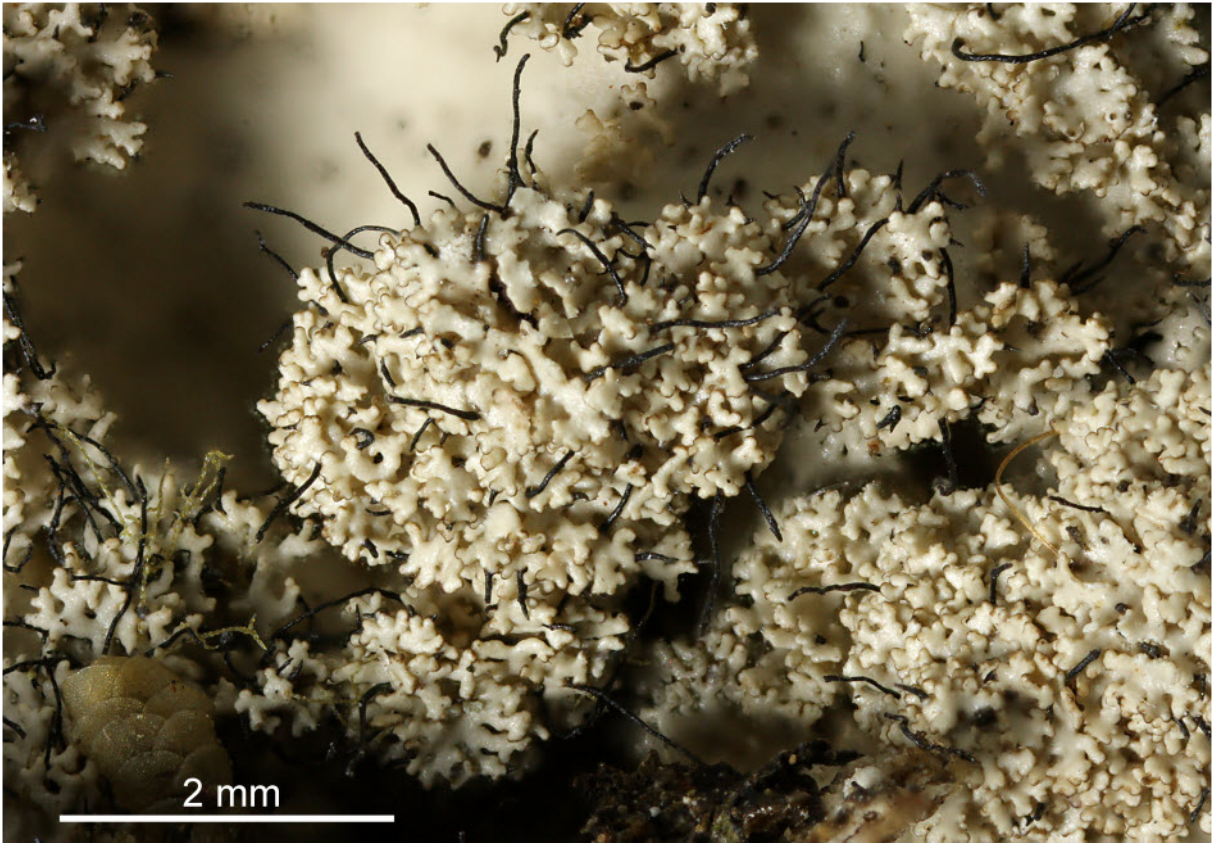
*Parmotrema planatilobatum* (Hale) Hale

Thallus pale grey, loosely attached, ciliate, emaculate, isidiate. Soralia absent. Isidia marginal and laminal, dorsiventral, palmately divided, coralloid, often ciliate. Medulla white. Lower surface black, with 3-5 mm broad, erhizinate, brown marginal zone. Chemistry: cortex K+ yellow; medulla K-, C+ red, KC+ red, P-; atranorin, gyrophoric acid.

[4997], Indonesien, Java, bei einem pyramidalen Hindutempel aus dem 14. Jh., an den Hängen des Lawu, Permugaran, Candi Sukuk, ca. 1000 m. Leg. Schumm 30.12.1988, det. H.Sipman 1998.







*Parmotrema planatilobatum*