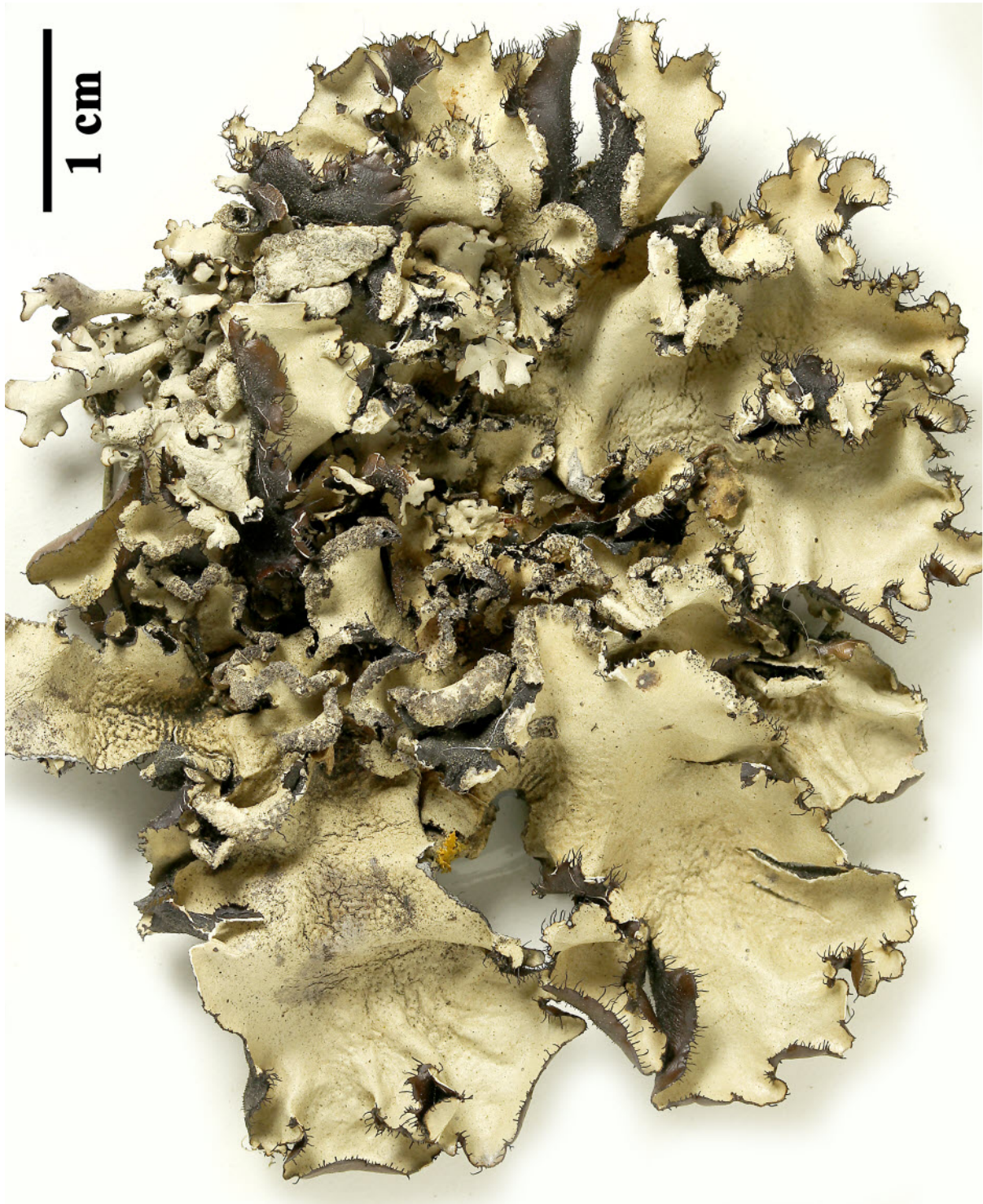
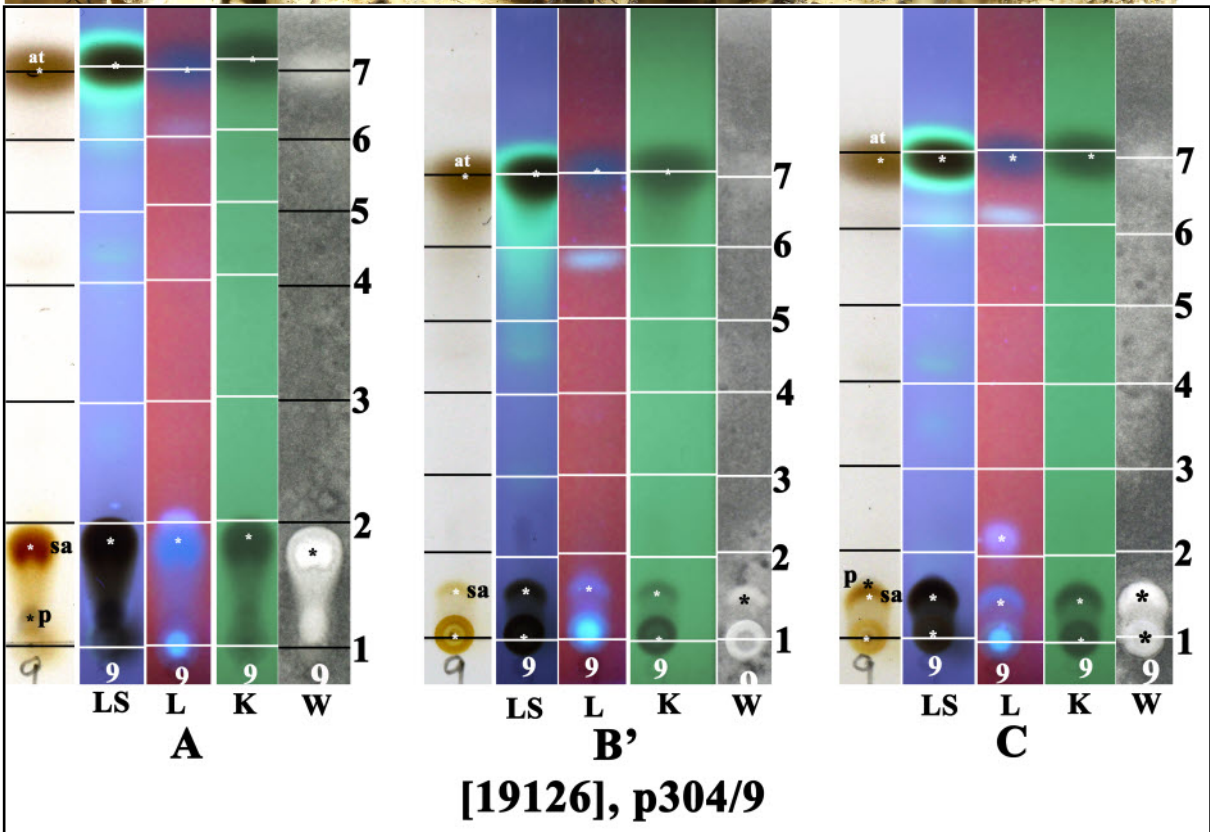
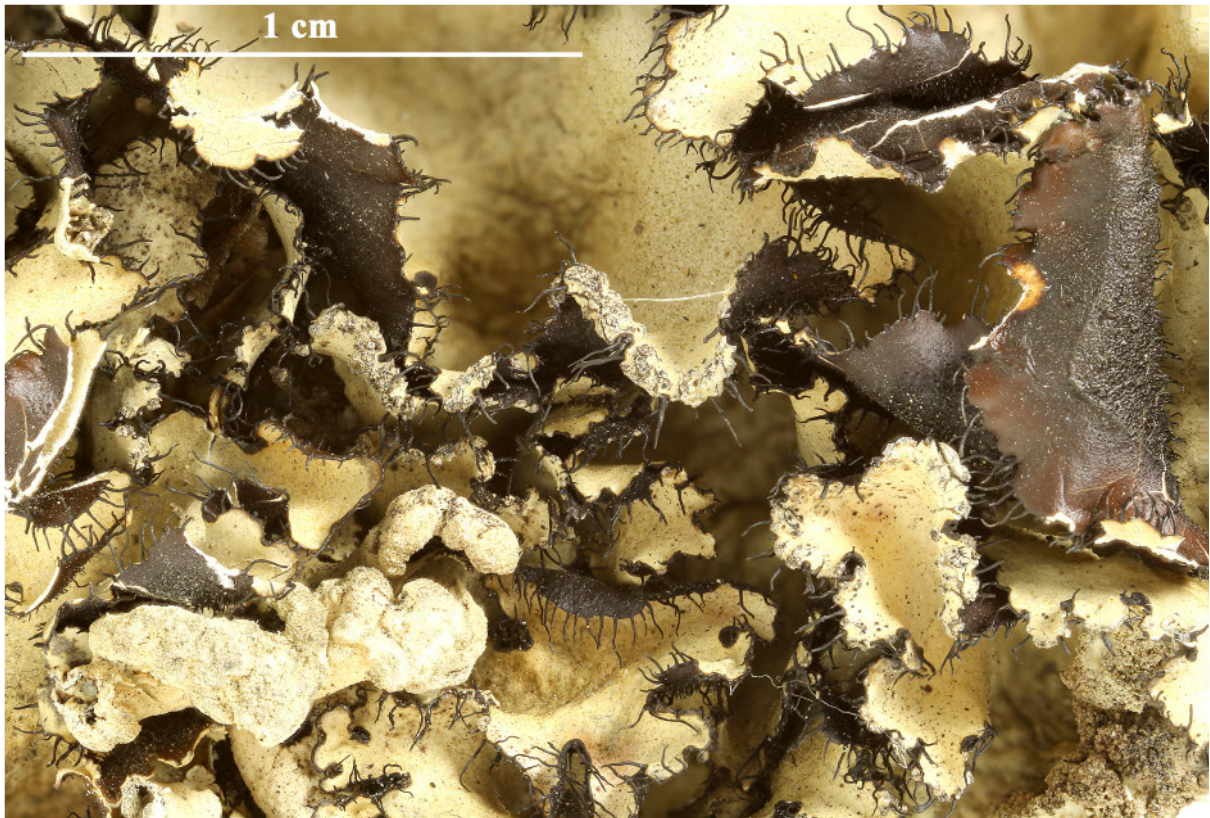


*Parmotrema reticulatum* (Taylor) M.Choisy  
[= *Rimelia reticulata* (Taylor) Hale & Fletcher]  
[= *Parmelia reticulata* Taylor]

[19126], New Zealand, South Island, Otago, rocky hillside, c. 27.5 km west-south-west of Ranfurly on Alexandra-Palmerston road, on rock outcrop with E aspect in paddock. Leg. J. Johnston (2123), 15.03.1985. Chemistry: atranorin, salazinic acid (major), consalazinic acid, proto-cetraric acid (trace) by TLC, anal. J. Johnston.





at: atranorin, sa: salazinic acid, p: protocetraric acid (trace)

*Parmotrema reticulatum*