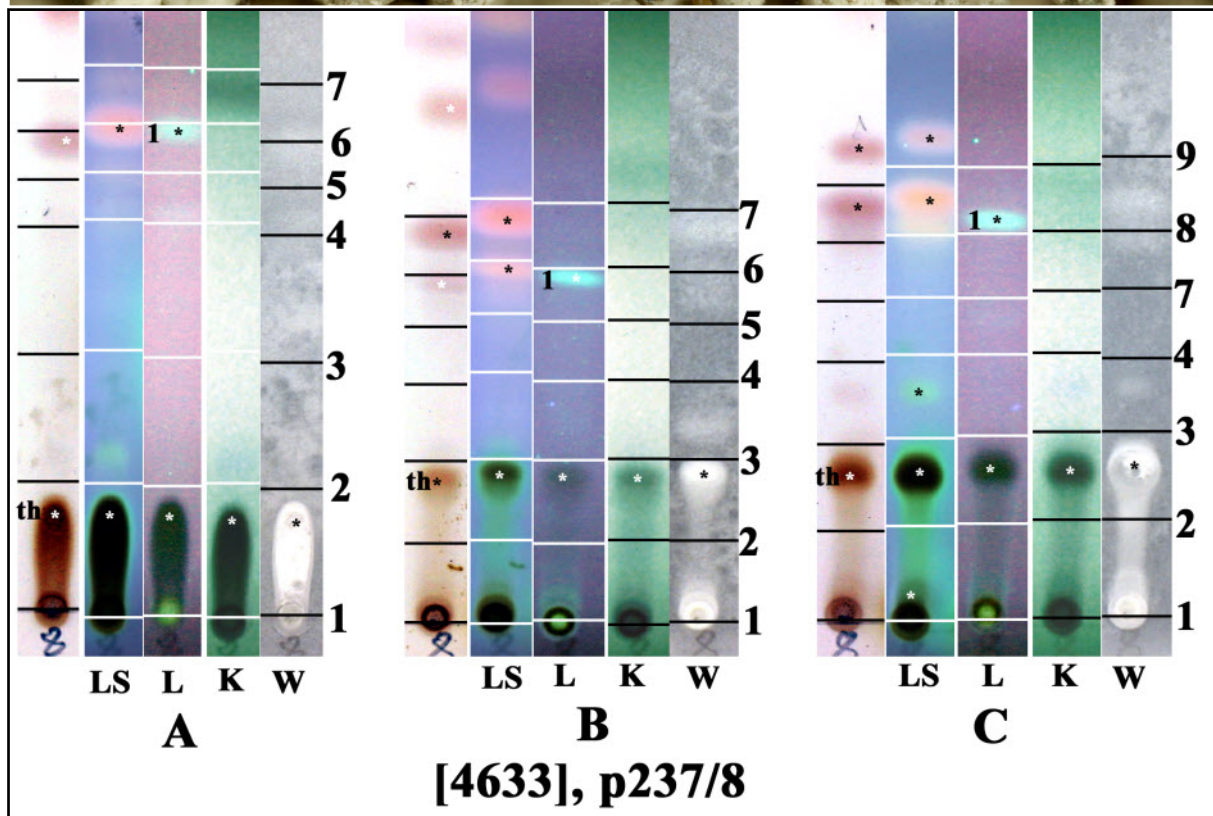


*Pertusaria corallina* (L.) Arnold

Thallus grey to whitish, rimose-areolate; isidia abundant, often covering the thallus, cylindrical or coralloid. Fertile warts rare, enclosing 2-4(-11) apothecia. Ascospores 2/ascus, 80-140(-230) x 40-80  $\mu\text{m}$ , wall 2-3  $\mu\text{m}$ , not zoned. Chemistry: K<sup>+</sup> yellow, KC<sup>+</sup> yellow, C<sup>-</sup>, P<sup>+</sup> yellow-red, UV<sup>-</sup>; thamnolic acid, terpene.

[4633], Österreich, Sellrainer Berge, südwestlich von Innsbruck, bei der Drei-Seen-Hütte südöstlich von Kühtai, ca. 2450 m, an Granit/Gneis, TK 8732. Leg. et det. F. Schumm, 04.08.1996.





th: thamnolic acid, 1: terpene, conf. J.A. Elix